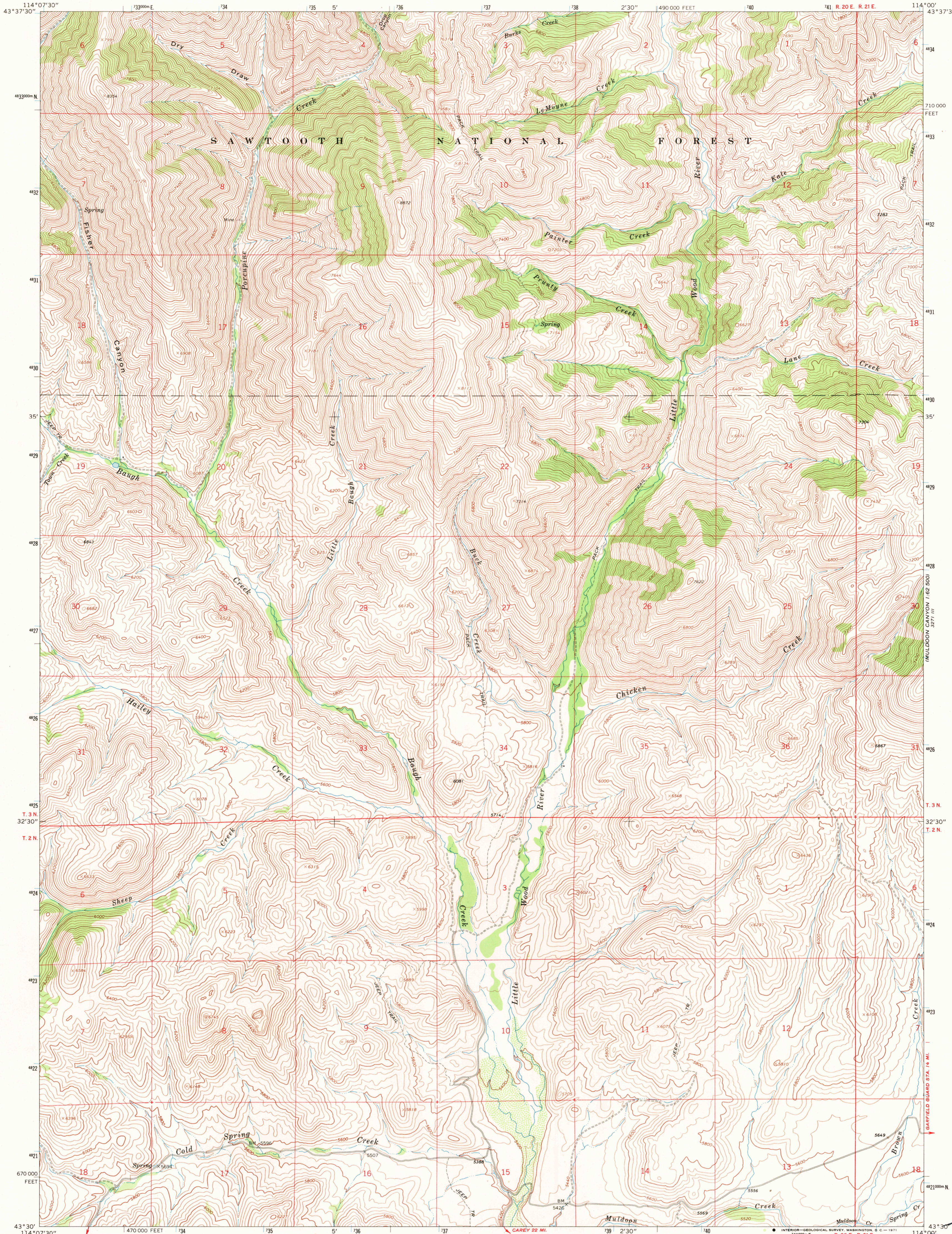
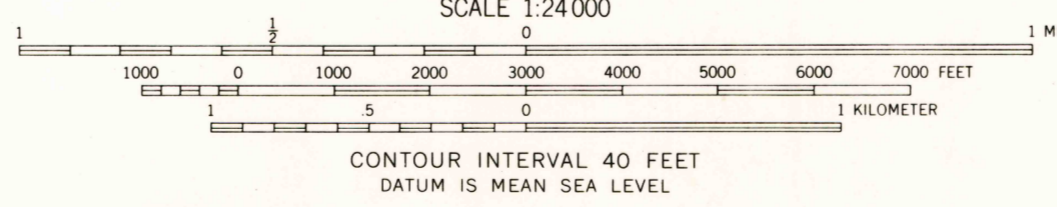
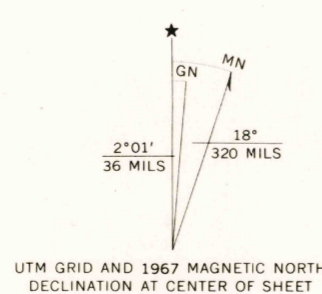


MULDON CANYON  
142,500  
142,500



Mapped, edited, and published by the Geological Survey  
Control by USGS and USC&GS  
Topography by photogrammetric methods from aerial  
photographs taken 1966. Field checked 1967  
Polyconic projection. 1927 North American datum  
10,000-foot grid based on Idaho coordinate system,  
central zone  
1000-meter Universal Transverse Mercator grid ticks,  
zone 11, shown in blue



ROAD CLASSIFICATION  
Light-duty ———— Unimproved dirt - - - - -

U.S.G.S.  
FILE COPY  
TOPOGRAPHIC DIVISION

THIS MAP COMPLIES WITH NATIONAL MAP ACCURACY STANDARDS  
FOR SALE BY U.S. GEOLOGICAL SURVEY, DENVER, COLORADO 80225, OR WASHINGTON, D. C. 20242  
A FOLDER DESCRIBING TOPOGRAPHIC MAPS AND SYMBOLS IS AVAILABLE ON REQUEST

BAUGH CREEK, IDAHO  
N4330—W11400/7.5

2310  
JUN 21 1971

1967  
AMS 3171 II SE—SERIES V893