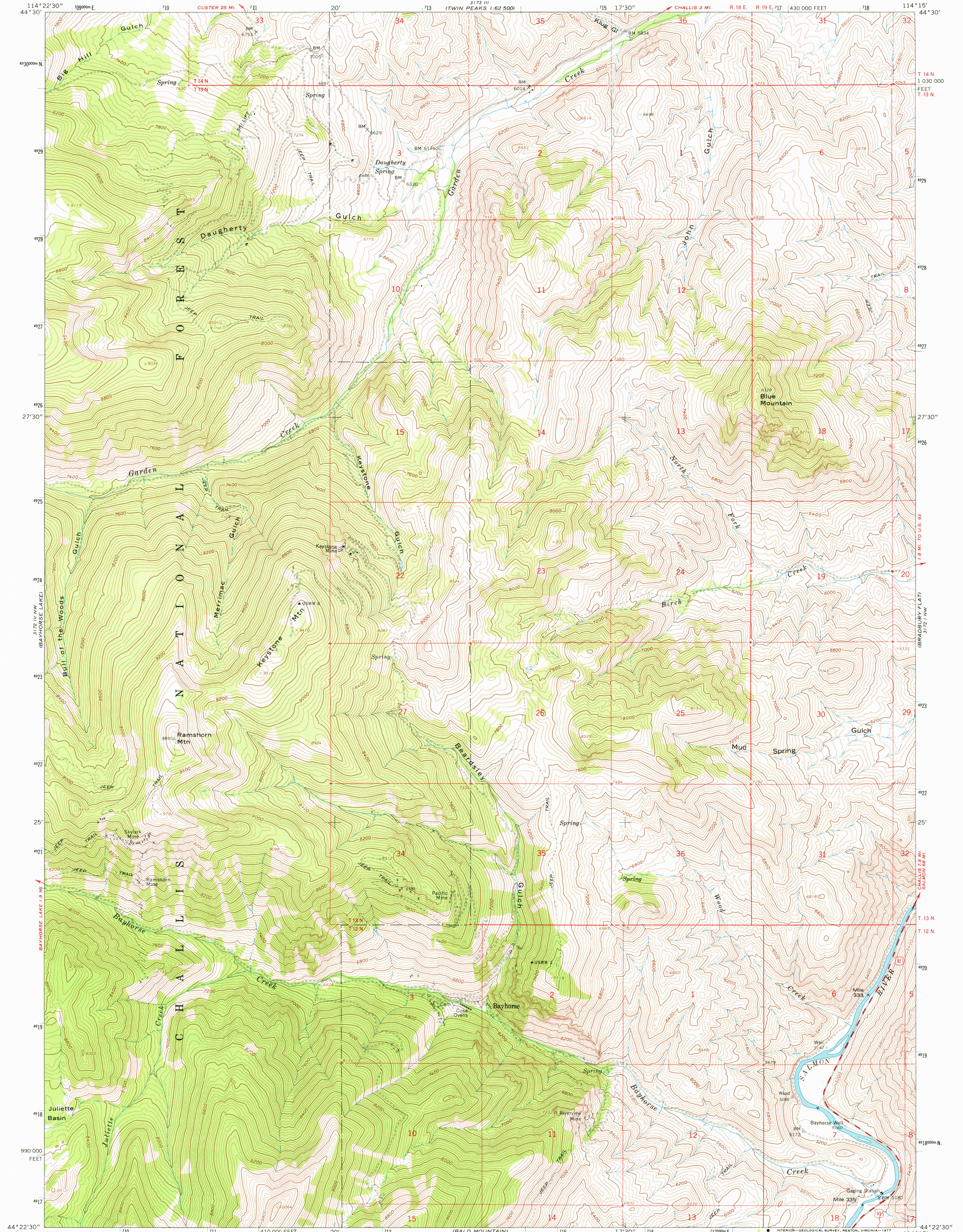
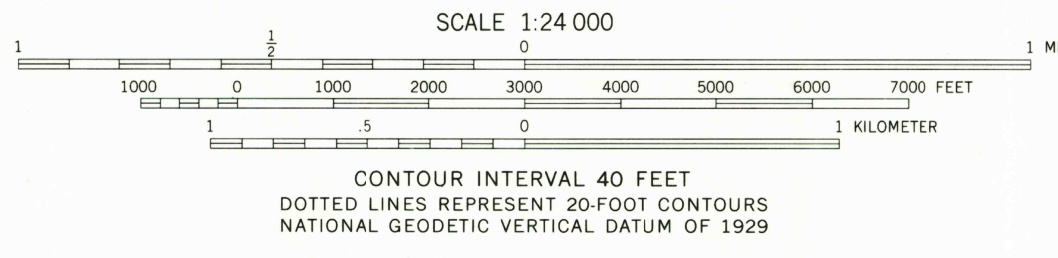


3173 III  
TWIN PEAKS  
1:62,500

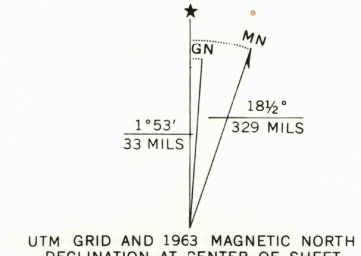
3173 III  
CHALLIS 3 MI.  
1:62,500



Mapped, edited, and published by the Geological Survey  
Control by USGS and USC&GS  
Topography by photogrammetric methods from aerial  
photographs taken 1957. Field checked 1963  
Polyconic projection. 1927 North American datum  
10,000-foot grid based on Idaho coordinate system, central zone  
1000-meter Universal Transverse Mercator grid ticks,  
zone 11, shown in blue  
Where omitted, land lines have not been established



ROAD CLASSIFICATION  
Medium-duty — Light-duty  
Unimproved dirt — U.S. Route



THIS MAP COMPLIES WITH NATIONAL MAP ACCURACY STANDARDS  
FOR SALE BY U. S. GEOLOGICAL SURVEY, DENVER, COLORADO 80225, OR RESTON, VIRGINIA 22092  
A FOLDER DESCRIBING TOPOGRAPHIC MAPS AND SYMBOLS IS AVAILABLE ON REQUEST

USGS  
Historical File  
Topographic Division

BAYHORSE, IDAHO  
NE/4 CLAYTON 15' QUADRANGLE  
N4422.5—W11415/7.5  
1963

2850  
OCT 11 1977