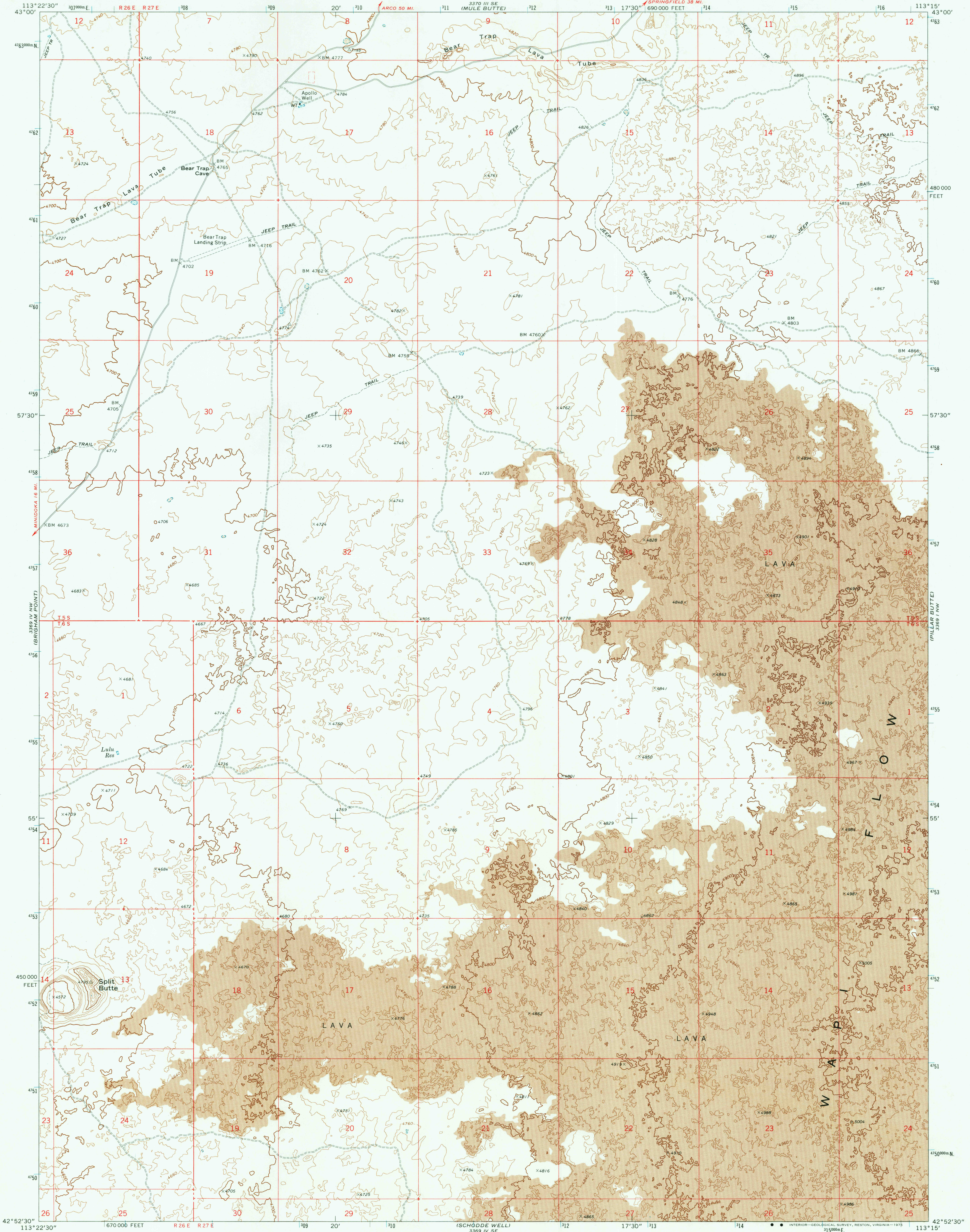
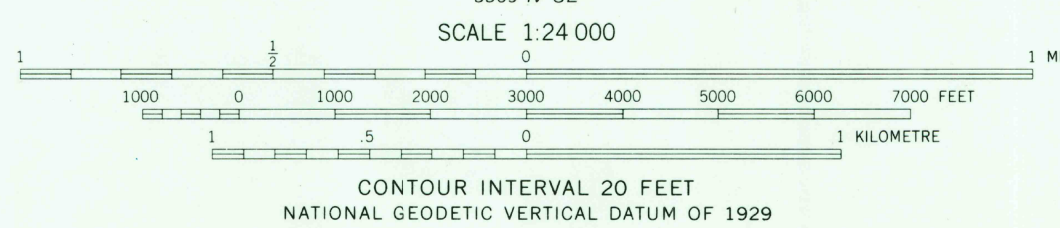
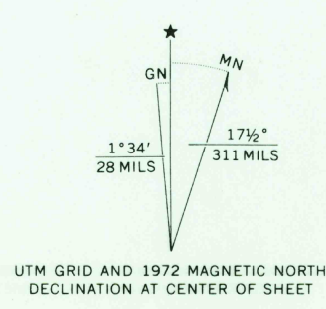


UNITED STATES
 GEOLOGICAL SURVEY

BEAR TRAP CAVE QUADRANGLE
 IDAHO—BLAINE CO.
 7.5 MINUTE SERIES (TOPOGRAPHIC)



Mapped, edited, and published by the Geological Survey
 Control by USGS and NOS/NOAA
 Topography by photogrammetric methods from aerial
 photographs taken 1971. Field checked 1972
 Projection and 10,000-foot grid ticks: Idaho coordinate
 system, central zone (transverse Mercator)
 1000-metre Universal Transverse Mercator grid ticks,
 zone 12, shown in blue. 1927 North American datum
 Fine red dashed lines indicate selected fence lines



ROAD CLASSIFICATION

Primary highway, hard surface	Light duty road, hard or improved surface
Secondary highway, hard surface	Unimproved road
Interstate Route	U. S. Route
	State Route

THIS MAP COMPLIES WITH NATIONAL MAP ACCURACY STANDARDS
 FOR SALE BY U. S. GEOLOGICAL SURVEY, DENVER, COLORADO 80225, OR RESTON, VIRGINIA 22092
 A FOLDER DESCRIBING TOPOGRAPHIC MAPS AND SYMBOLS IS AVAILABLE ON REQUEST

USGS
 Historical File
 Topographic Division

BEAR TRAP CAVE, IDAHO
 N4252.5—W11315/7.5
 1972
 AMS 3369 IV NE—SERIES V895

MAR 17 1976