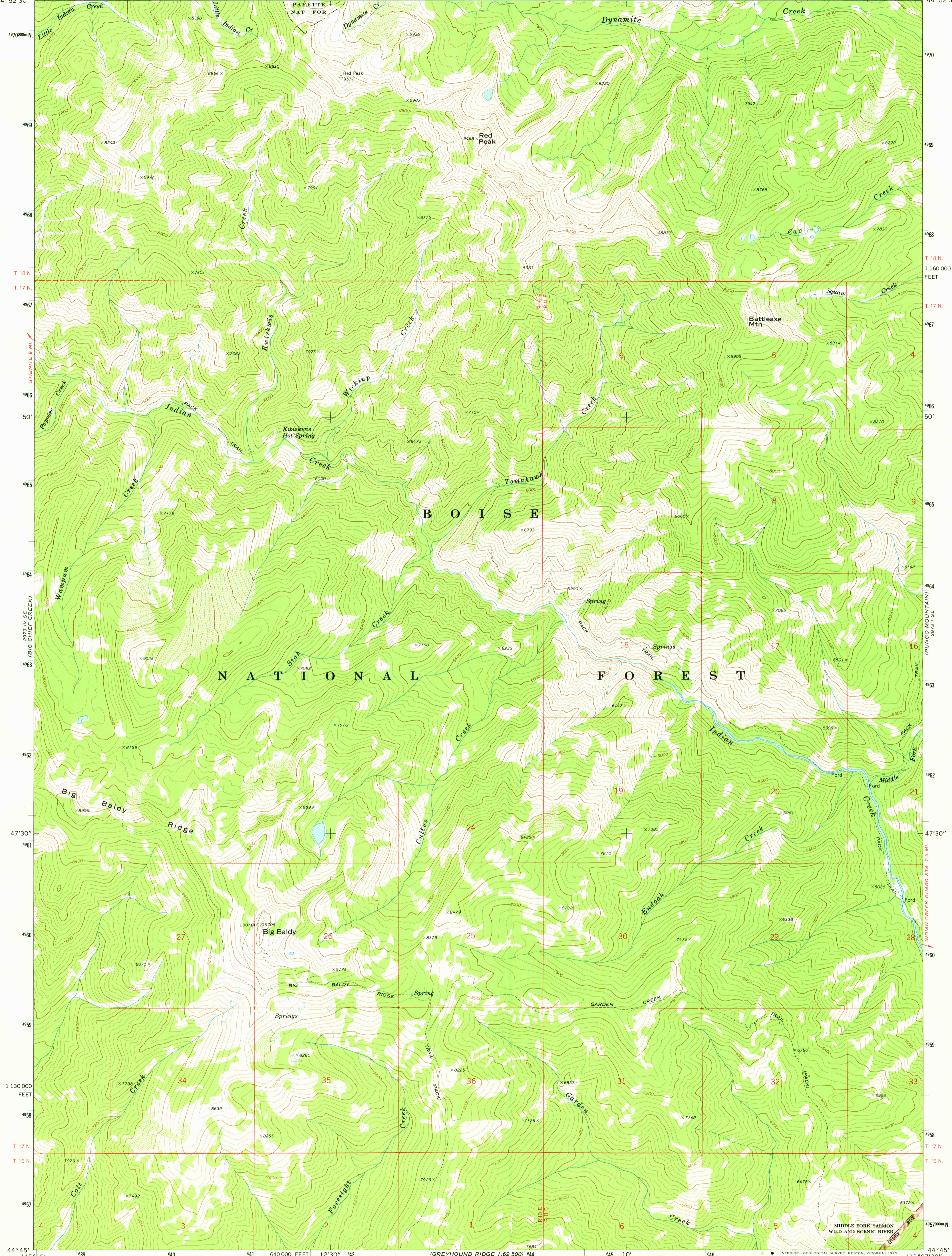
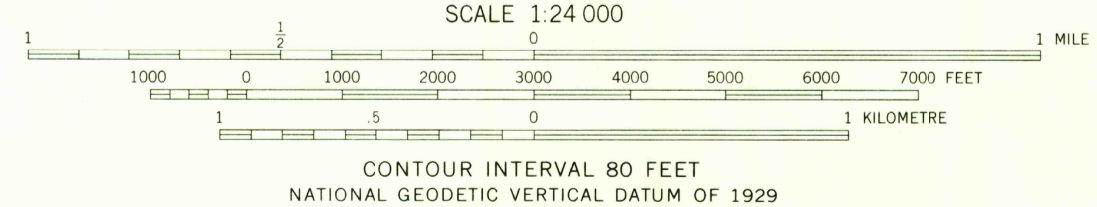
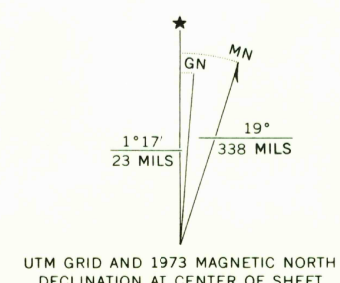


115°15' 44°52'30" 40 41 12'30" 42 2973 1 NW (RAINBOW PEAK) 44 10' 45 46 47 560 000 FEET 115°07'30" 44°52'30"



Mapped by the U. S. Forest Service
Edited and published by the Geological Survey
Control by USGS, NOS/NOAA, and USFS
Topography by photogrammetric methods from aerial
photographs taken 1964 and 1972. Field checked by USGS 1973
Projection and 10,000-foot grid ticks: Idaho coordinate
system, west zone (transverse Mercator)
1000-metre Universal Transverse Mercator grid ticks,
zone 11, shown in blue. 1927 North American datum
Where omitted, land lines have not been established



ROAD CLASSIFICATION
Trails

THIS MAP COMPLIES WITH NATIONAL MAP ACCURACY STANDARDS
FOR SALE BY U. S. GEOLOGICAL SURVEY, DENVER, COLORADO 80225, OR RESTON, VIRGINIA 22092
A FOLDER DESCRIBING TOPOGRAPHIC MAPS AND SYMBOLS IS AVAILABLE ON REQUEST

USGS
HISTORICAL FILE
TOPOGRAPHIC DIVISION
BIG BALDY, IDAHO
N4445-W11507.5/7.5
1973
AMS 2973 1 SW-SERIES V893

OCT 2 1975