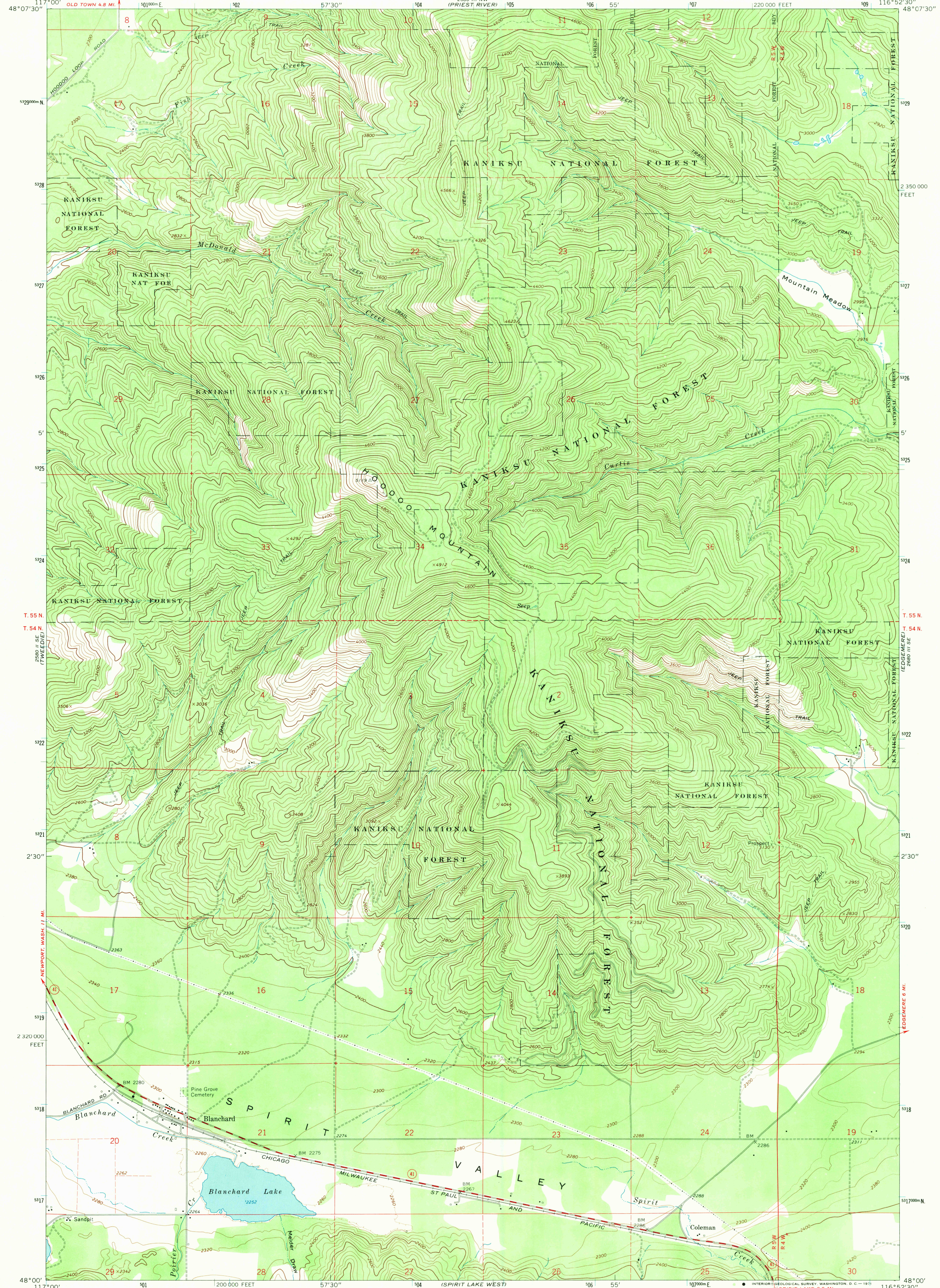


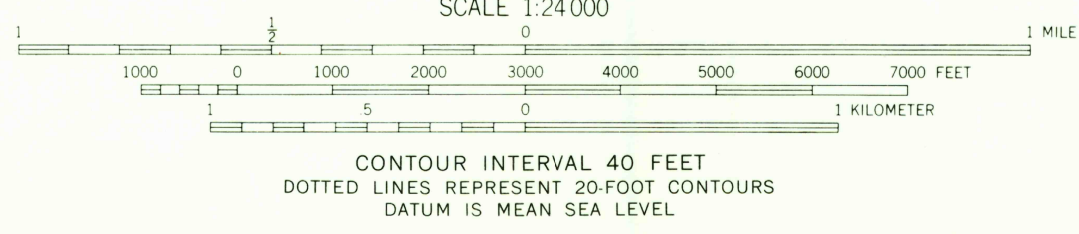
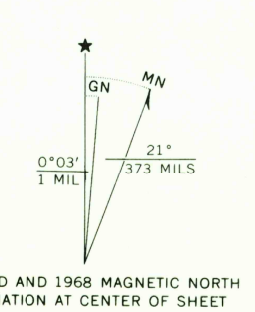
2879
162-500
(MT. SPOKANE)

UNITED STATES
DEPARTMENT OF THE INTERIOR
GEOLOGICAL SURVEY

BLANCHARD QUADRANGLE
IDAHO-BONNER CO.
7.5 MINUTE SERIES (TOPOGRAPHIC)



Mapped, edited, and published by the Geological Survey
Control by USGS and USC&GS
Topography by photogrammetric methods from aerial photographs taken 1966. Field checked 1968
Polyconic projection. 1927 North American datum
10,000-foot grid based on Idaho coordinate system, west zone
1000-meter Universal Transverse Mercator grid ticks, zone 11, shown in blue
Fine red dashed lines indicate selected fence lines



Secondary highway, all weather, light-duty road, all weather, improved surface
Unimproved road, fair or dry weather
State Route
USGS Historical File Topographic Division



FOR SALE BY U. S. GEOLOGICAL SURVEY, DENVER, COLORADO 80225, OR WASHINGTON, D. C. 20242
A FOLDER DESCRIBING TOPOGRAPHIC MAPS AND SYMBOLS IS AVAILABLE ON REQUEST

U.S.G.S. BLANCHARD, IDAHO
N4800-W11652.5/7.5
1968
AMS 2680 III SW-SERIES V893

JUL 27 1971
HISTORICAL