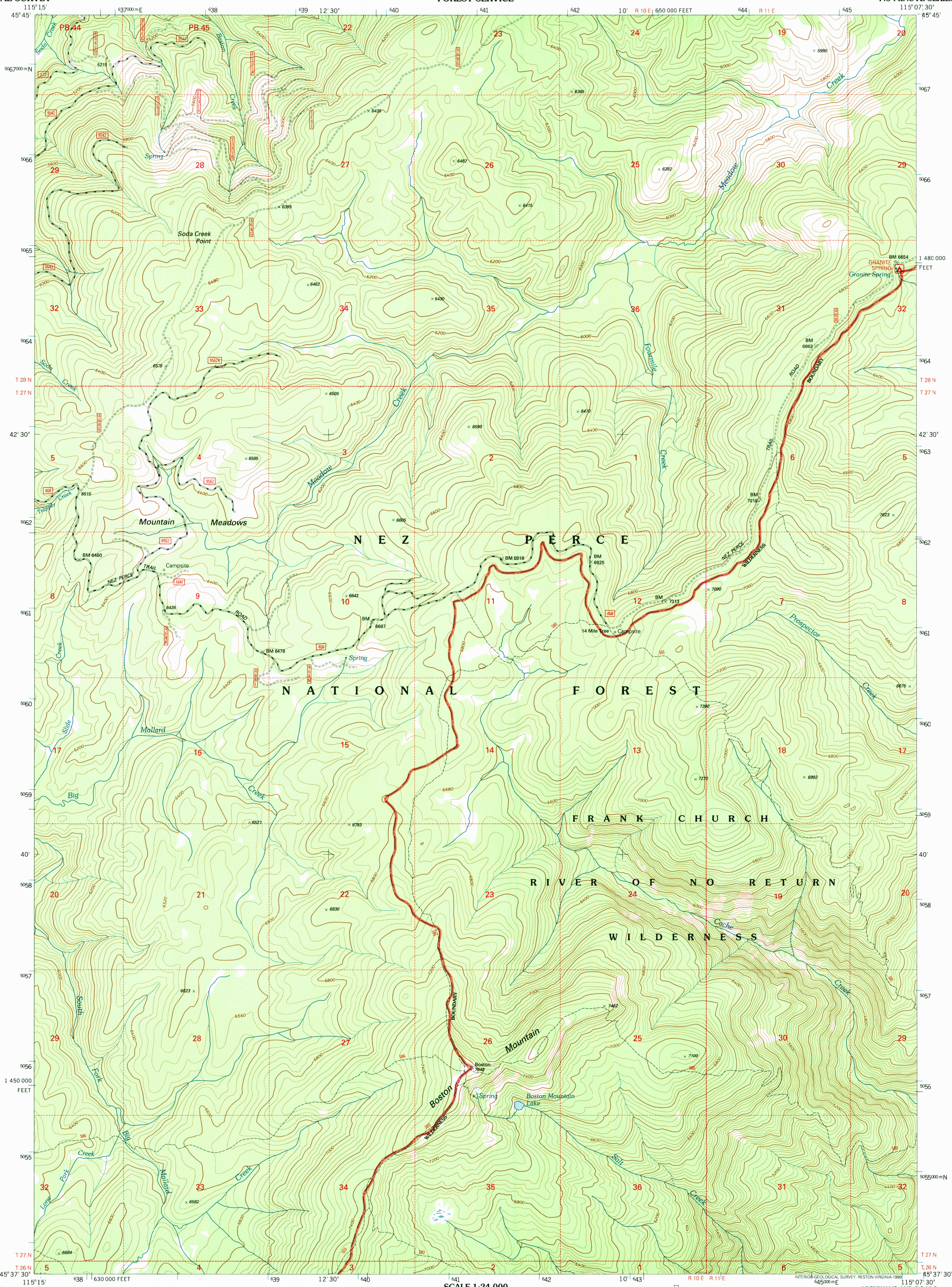


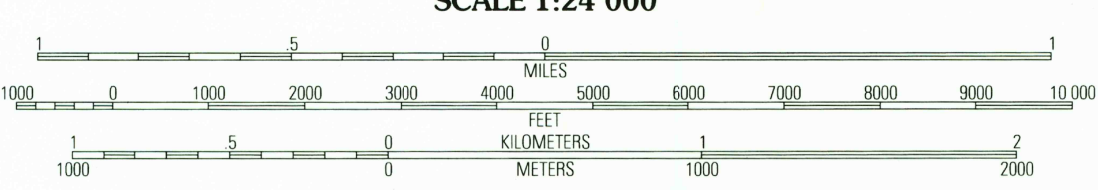
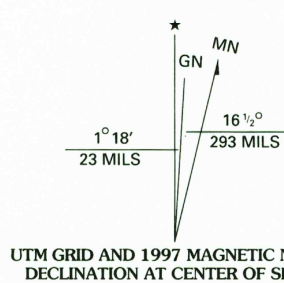
RECEIVED

AUG 3 1 1999

USGS NMD  
HISTORICAL MAP ARCHIVES



Produced by the U.S. Geological Survey  
Revised by the U.S. Forest Service  
Topography compiled 1972. Planimetry derived from imagery taken 1992  
Public Land Survey System and survey control current as of 1995. Partial  
field check by U.S. Forest Service 1995  
North American Datum of 1927 (NAD 27). Projection and 10 000-foot ticks:  
Idaho coordinate system, west zone (Transverse Mercator). Blue  
1000-meter Universal Transverse Mercator ticks, zone 11  
North American Datum of 1983 (NAD 83) is shown by dashed corner ticks  
The values of the shift between NAD 27 and NAD 83 for 7.5-minute  
intersections are obtainable from National Geodetic Survey NADCON software  
Non-National Forest System lands within the National Forest  
Inholdings may exist in other National or State reservations  
This map is not a legal land line or ownership document. Public lands are  
subject to change and leasing, and may have access restrictions; check  
with local offices. Obtain permission before entering private lands  
Protraction Blocks (PB) are unsurveyed land of uncertain acreage



CONTOUR INTERVAL 40 FEET  
NATIONAL GEODETIC VERTICAL DATUM OF 1929  
TO CONVERT FEET TO METERS MULTIPLY BY 0.3048



1	2	3	1 Black Hawk Mountain
4	5	2 Sable Hill	3 Green Mountain
6	7	4 Trapper Creek	5 Spread Creek Point
		6 Whitewater Ranch	7 Hida Point
		8 Sheep Hill	

Interstate.....	7	Primary highway.....	4
U. S. ....	161	Secondary highway.....	2
State .....	79	Light-duty road.....	1
County .....	1	Paved.....	1
National Forest, suitable for passenger cars.....	105	Gravel.....	1
National Forest, suitable for high clearance vehicles.....	106	Dirt.....	1
National Forest Trail.....	384	Composition unspecified....	4WD
		Unimproved; 4 wheel drive.....	4WD
		Trail.....	1
		Gate.....	1

BOSTON MOUNTAIN, ID  
1995

NIMA 2975 II NW - SERIES V893

FOR SALE BY U.S. GEOLOGICAL SURVEY, P.O. BOX 25286, DENVER, COLORADO 80225  
A FOLDER DESCRIBING TOPOGRAPHIC MAPS AND SYMBOLS IS AVAILABLE ON REQUEST

