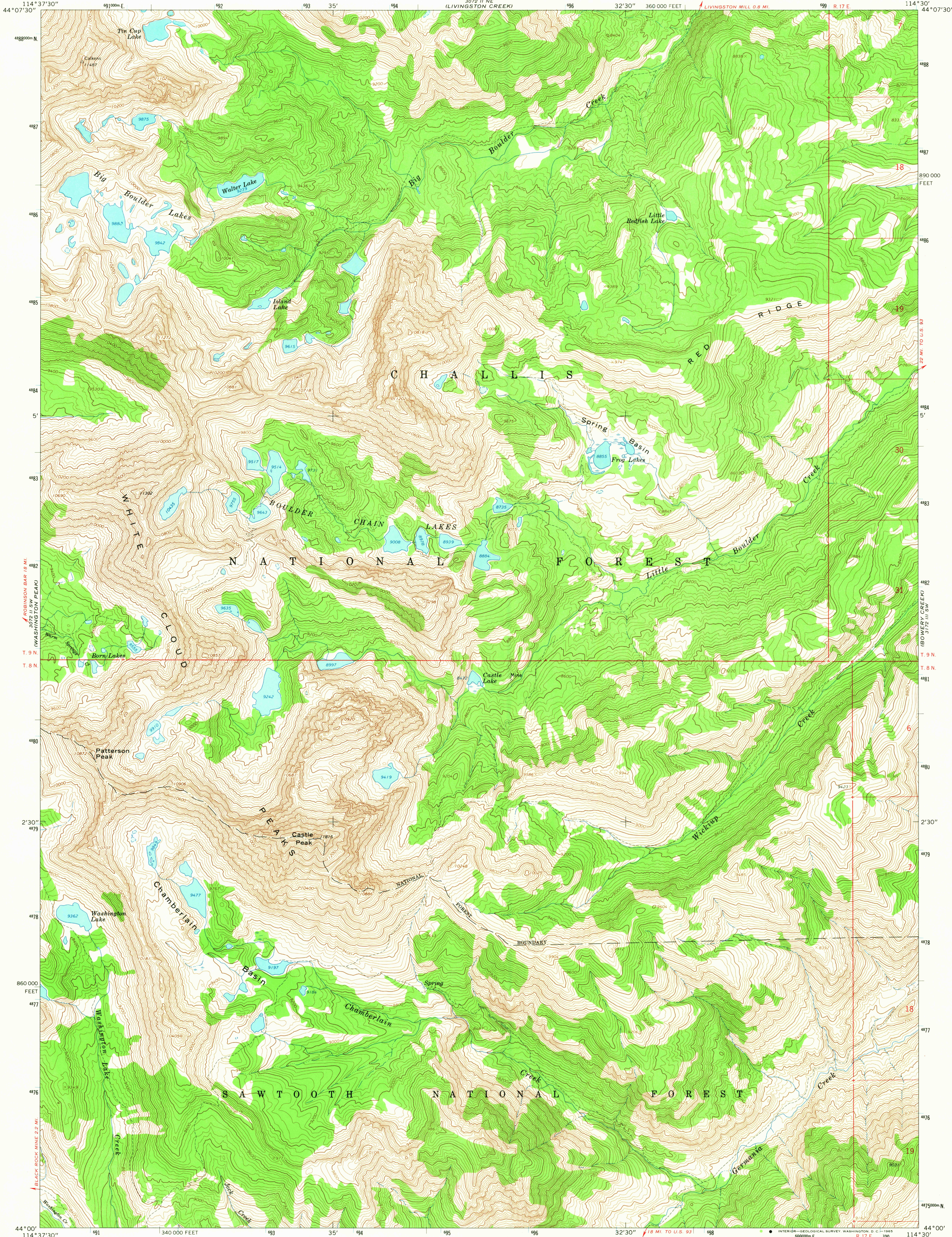
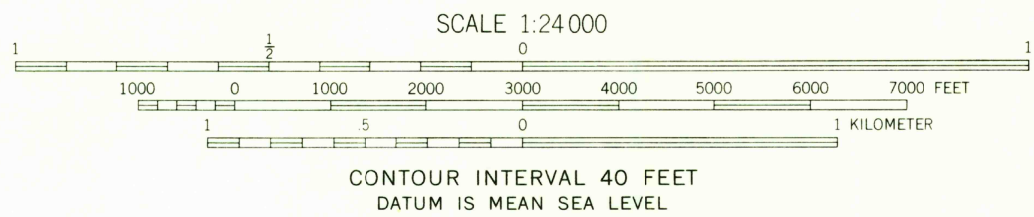
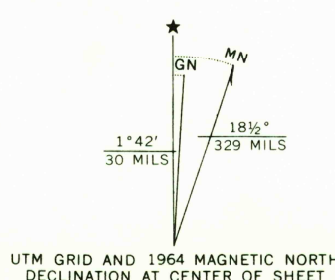


UNITED STATES
DEPARTMENT OF THE INTERIOR
GEOLOGICAL SURVEY

BOULDER CHAIN LAKES QUADRANGLE
IDAHO—CUSTER CO.
7.5 MINUTE SERIES (TOPOGRAPHIC)



Mapped, edited, and published by the Geological Survey
Control by USGS and USC&GS
Topography by photogrammetric methods from aerial
photographs taken 1957. Field checked 1964
Polyconic projection. 1927 North American datum
10,000-foot grid based on Idaho coordinate system,
central zone
1000-meter Universal Transverse Mercator grid ticks,
zone 11, shown in blue
Where omitted, land lines have not been established



BOULDER CHAIN LAKES, IDAHO
N4400—W11430/7.5

1964
AMS 3072 II SE—SERIES V893

ROAD CLASSIFICATION
Trails

U.S.G.S.
FILE COPY
TOPOGRAPHIC DIVISION

NOV 2 1965