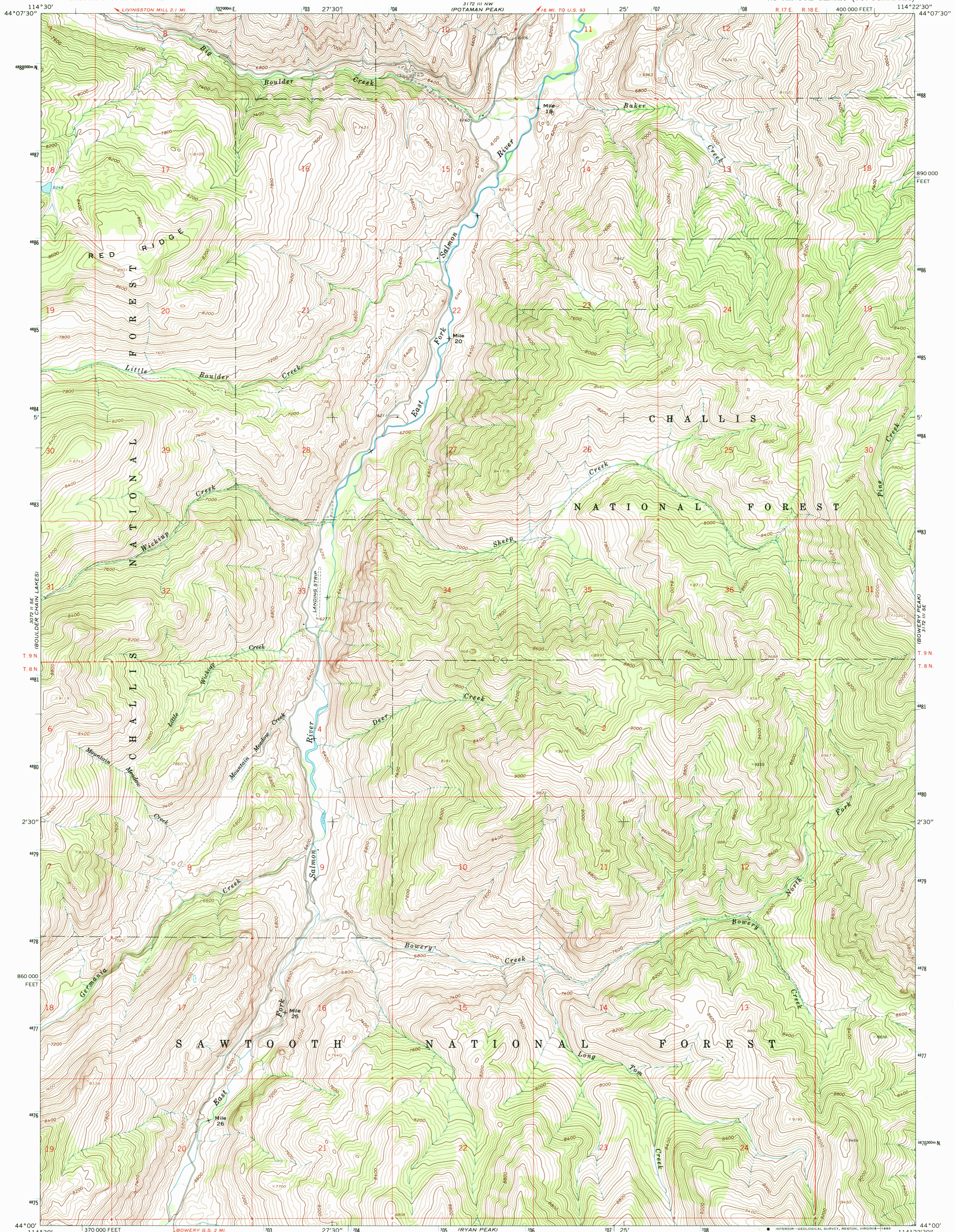


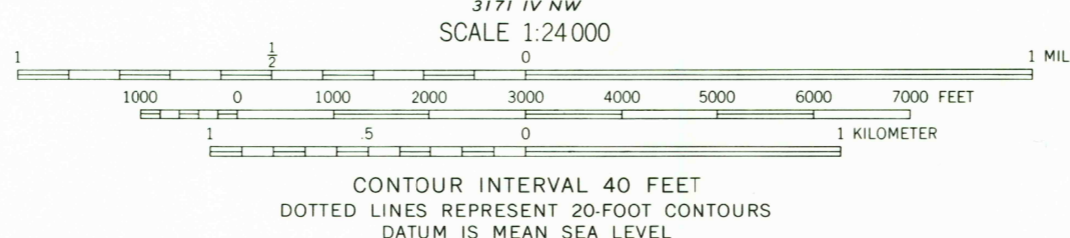
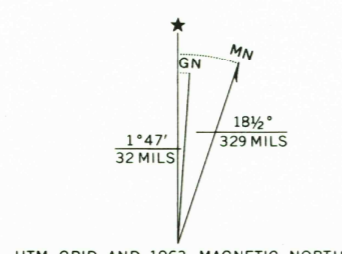
UNITED STATES
DEPARTMENT OF THE INTERIOR
GEOLOGICAL SURVEY

BOWERY CREEK QUADRANGLE
IDAHO-CUSTER CO.
7.5 MINUTE SERIES (TOPOGRAPHIC)



Mapped, edited, and published by the Geological Survey

Control by USGS and USC&GS
Topography by photogrammetric methods from aerial photographs taken 1957. Field checked 1963
Polyconic projection. 1927 North American datum
10,000-foot grid based on Idaho coordinate system, central zone
1000-meter Universal Transverse Mercator grid ticks, zone 11, shown in blue
Where omitted, land lines have not been established
Map photinspected 1980
No major culture or drainage changes observed



ROAD CLASSIFICATION
Light-duty ————— Unimproved dirt - - - - -

THIS MAP COMPLIES WITH NATIONAL MAP ACCURACY STANDARDS
FOR SALE BY U. S. GEOLOGICAL SURVEY, DENVER, COLORADO 80225, OR RESTON, VIRGINIA 22092
A FOLDER DESCRIBING TOPOGRAPHIC MAPS AND SYMBOLS IS AVAILABLE ON REQUEST

BOWERY CREEK, IDAHO
N4400-W11422.5/7.5

1963
PHOTOINSPECTED 1980
AMS 3172 III SW-SERIES V693

RETURN TO:
MMD HISTORICAL MAP ARCHIVES
RESTON, VA 22092