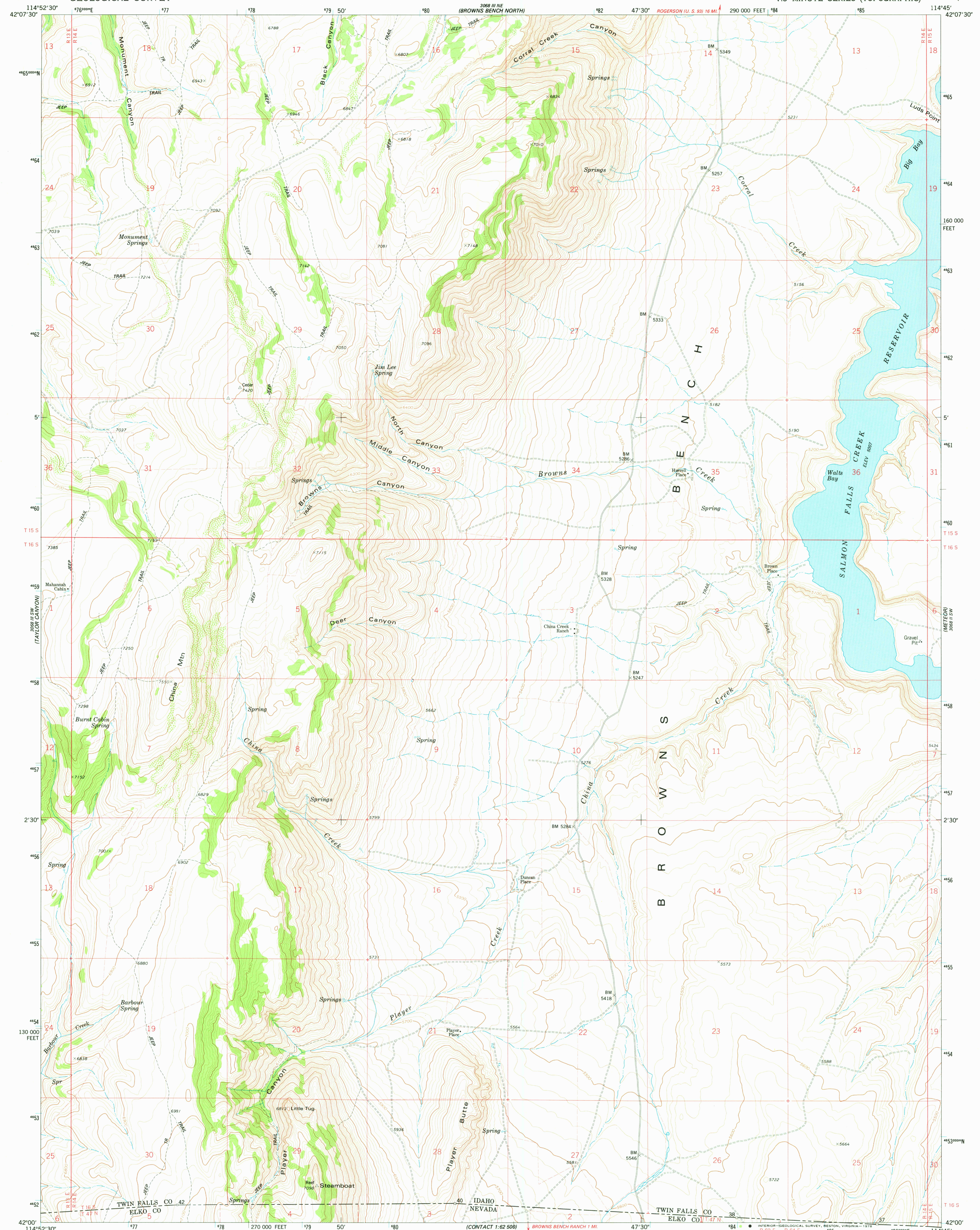
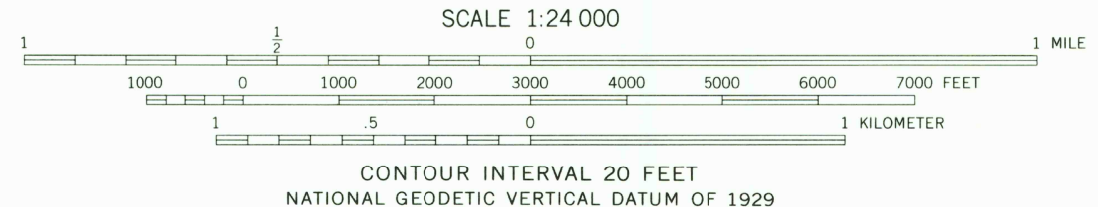
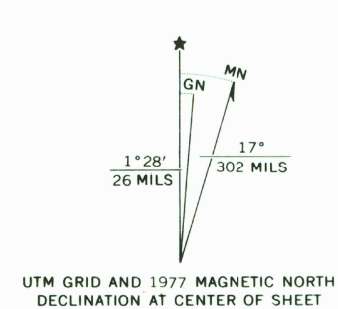


UNITED STATES  
DEPARTMENT OF THE INTERIOR  
GEOLOGICAL SURVEY

BROWNS BENCH SOUTH QUADRANGLE  
IDAHO-NEVADA  
7.5 MINUTE SERIES (TOPOGRAPHIC)



Mapped, edited, and published by the Geological Survey  
Control by USGS and NOS/NOAA  
Topography by photogrammetric methods from aerial photographs taken 1972. Field checked 1974  
Projection and 10,000-foot grid ticks: Idaho coordinate system, central zone (transverse Mercator)  
1000-meter Universal Transverse Mercator grid ticks, zone 11, shown in blue. 1927 North American datum  
Fine red dashed lines indicate selected fence lines and field lines where generally visible on aerial photographs  
This information is unchecked



ROAD CLASSIFICATION

Primary highway, hard surface	Light-duty road, hard or improved surface
Secondary highway, hard surface	Unimproved road
Interstate Route	U.S. Route
	State Route

THIS MAP COMPLIES WITH NATIONAL MAP ACCURACY STANDARDS  
FOR SALE BY U.S. GEOLOGICAL SURVEY, DENVER, COLORADO 80225, OR RESTON, VIRGINIA 22092  
A FOLDER DESCRIBING TOPOGRAPHIC MAPS AND SYMBOLS IS AVAILABLE ON REQUEST

BROWNS BENCH SOUTH, IDAHO-NEV.  
N4200-W11445/7.5

USGS  
Historical File  
Topographic Division  
1977  
AMS 3068 III SE-SERIES V893

FEB 18 1978  
3500