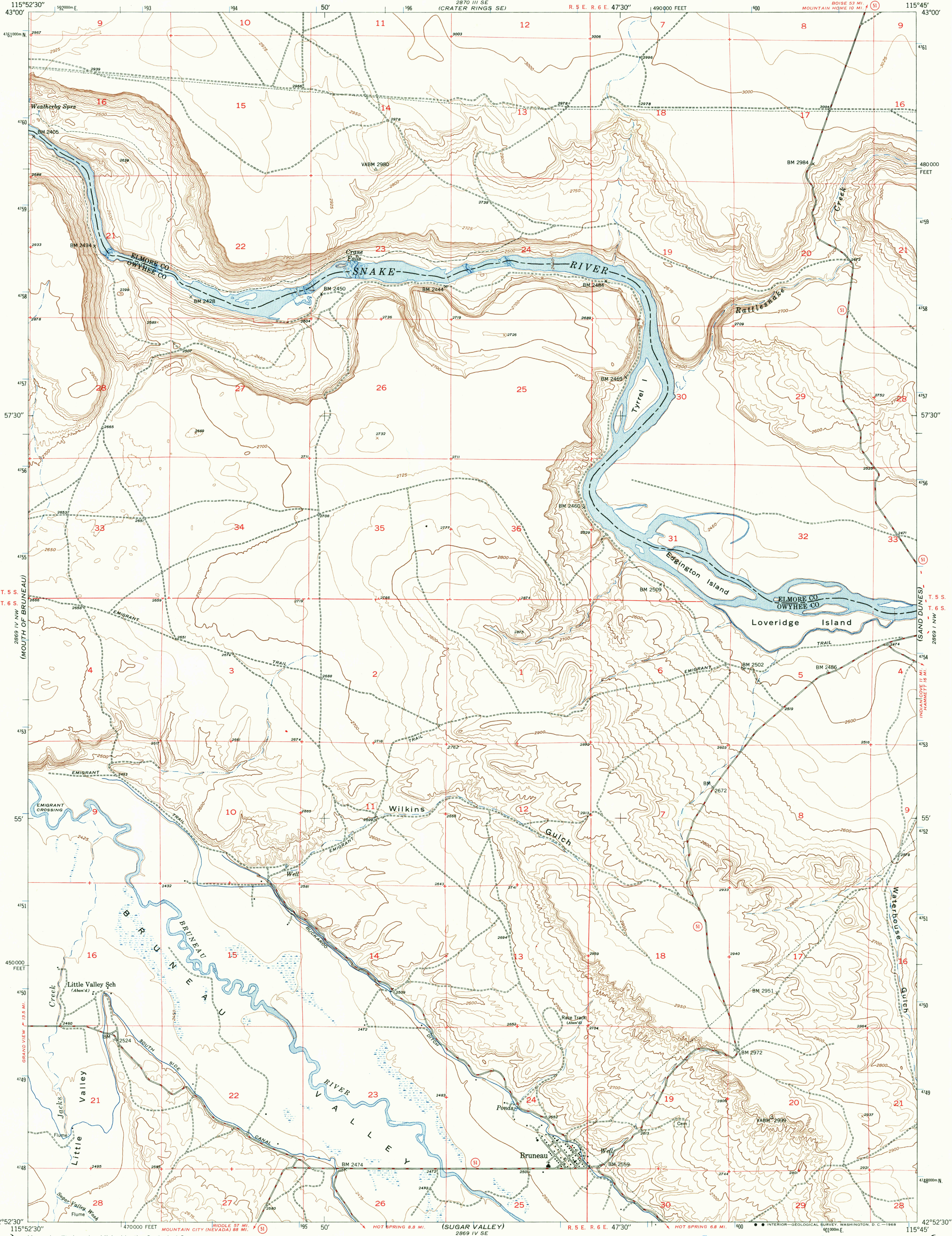
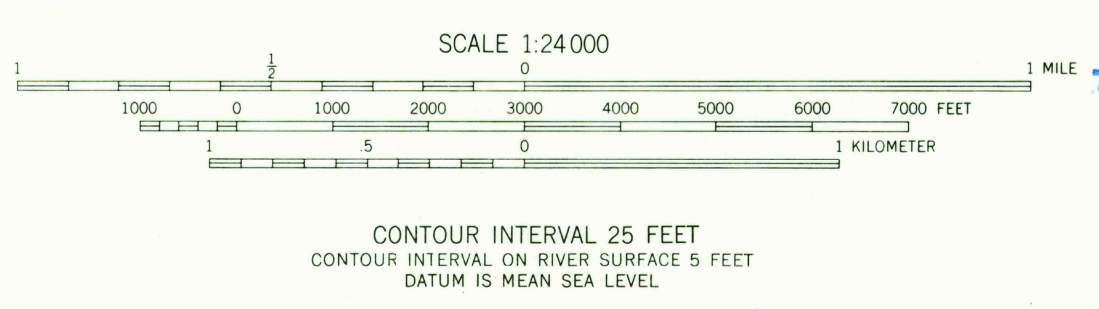
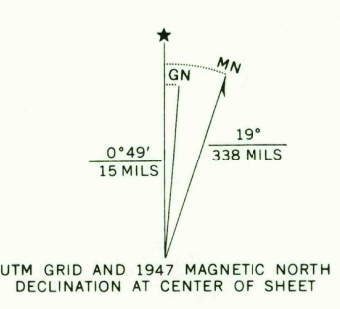


UNITED STATES
DEPARTMENT OF THE INTERIOR
GEOLOGICAL SURVEY

BRUNEAU QUADRANGLE
IDAHO
7.5 MINUTE SERIES (TOPOGRAPHIC)



Mapped, edited, and published by the Geological Survey
Control by USGS and USC & GS
Culture and drainage in part compiled from
aerial photographs taken 1946
Topography by plane-table methods 1946-1947
Polyconic projection. 1927 North American datum
10,000 foot grid based on Idaho Coordinate System,
West Zone
1000-meter Universal Transverse Mercator grid ticks,
zone 11, shown in blue



USGS
Historical File
Topographic Division

ROAD CLASSIFICATION
HARD-SURFACE ALL WEATHER ROADS DRY WEATHER ROADS
Heavy-duty 4 LANE 6 LANE Improved dirt
Medium-duty 4 LANE 6 LANE Unimproved dirt
Loose-surface or narrow hard-surface
U. S. Route State Route

THIS MAP COMPLIES WITH NATIONAL MAP ACCURACY STANDARDS
FOR SALE BY U. S. GEOLOGICAL SURVEY, DENVER, COLORADO 80225 OR WASHINGTON, D. C. 20242
A FOLDER DESCRIBING TOPOGRAPHIC MAPS AND SYMBOLS IS AVAILABLE ON REQUEST

U.S.G.S.
FILE COPY
TOPOGRAPHIC DIVISION

BRUNEAU, IDAHO
N4252.5-W11545.7.5
1947
AMS 2869 IV NE-SERIES V893

1720
JUL 12 1968