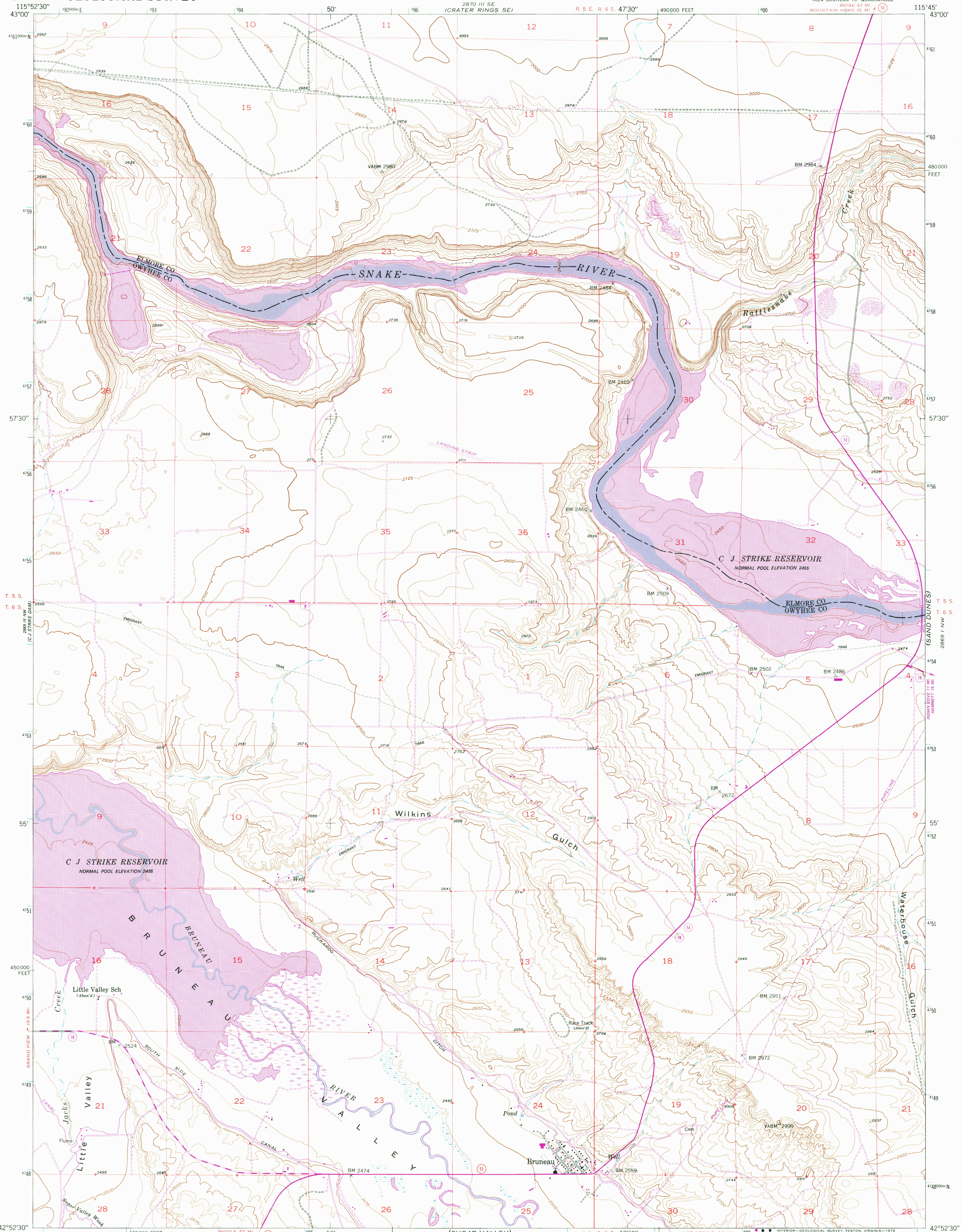


2870 II SW
(MOUNTAIN SOUTH)



Mapped, edited, and published by the Geological Survey

Control by USGS and USC & GS

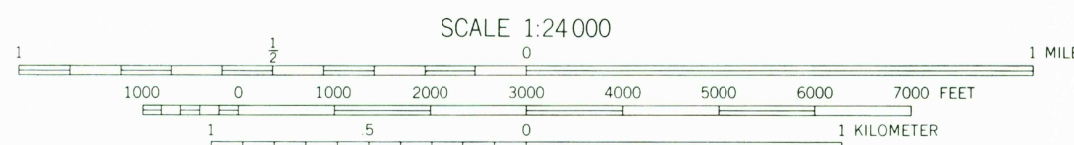
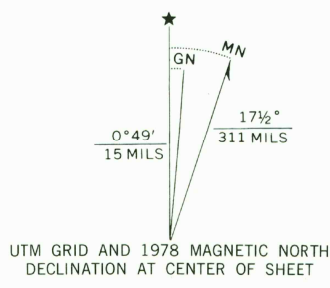
Culture and drainage in part compiled from
aerial photographs taken 1946

Topography by plane-table methods 1946-1947

Polyconic projection. 1927 North American datum
10,000 foot grid based on Idaho Coordinate System,
West Zone

1000-meter Universal Transverse Mercator grid ticks,
zone 11, shown in blue

Revisions shown in purple compiled from aerial photographs
taken 1976 and other source data. This information not
field checked. Map edited 1978



CONTOUR INTERVAL 25 FEET
CONTOUR INTERVAL ON RIVER SURFACE 5 FEET
NATIONAL GEODETIC VERTICAL DATUM OF 1929

THIS MAP COMPLIES WITH NATIONAL MAP ACCURACY STANDARDS
FOR SALE BY U. S. GEOLOGICAL SURVEY, DENVER, COLORADO 80225, OR RESTON, VIRGINIA 22092
A FOLDER DESCRIBING TOPOGRAPHIC MAPS AND SYMBOLS IS AVAILABLE ON REQUEST

ROAD CLASSIFICATION

Primary highway, all weather, hard surface	Light-duty road, all weather, improved surface
Secondary highway, all weather, hard surface	Unimproved road, fair or dry weather

I Interstate Route
U U. S. Route
S State Route

USGS
Historical File
Graphic Division

BRUNEAU, IDAHO
NE 4 BRUNEAU 15' QUADRANGLE
N4252.5-W11545.7.5

JUN 26 1979

1947
PHOTOREVISED 1978
AMS 2869 IV NR--SERIES V893

2100