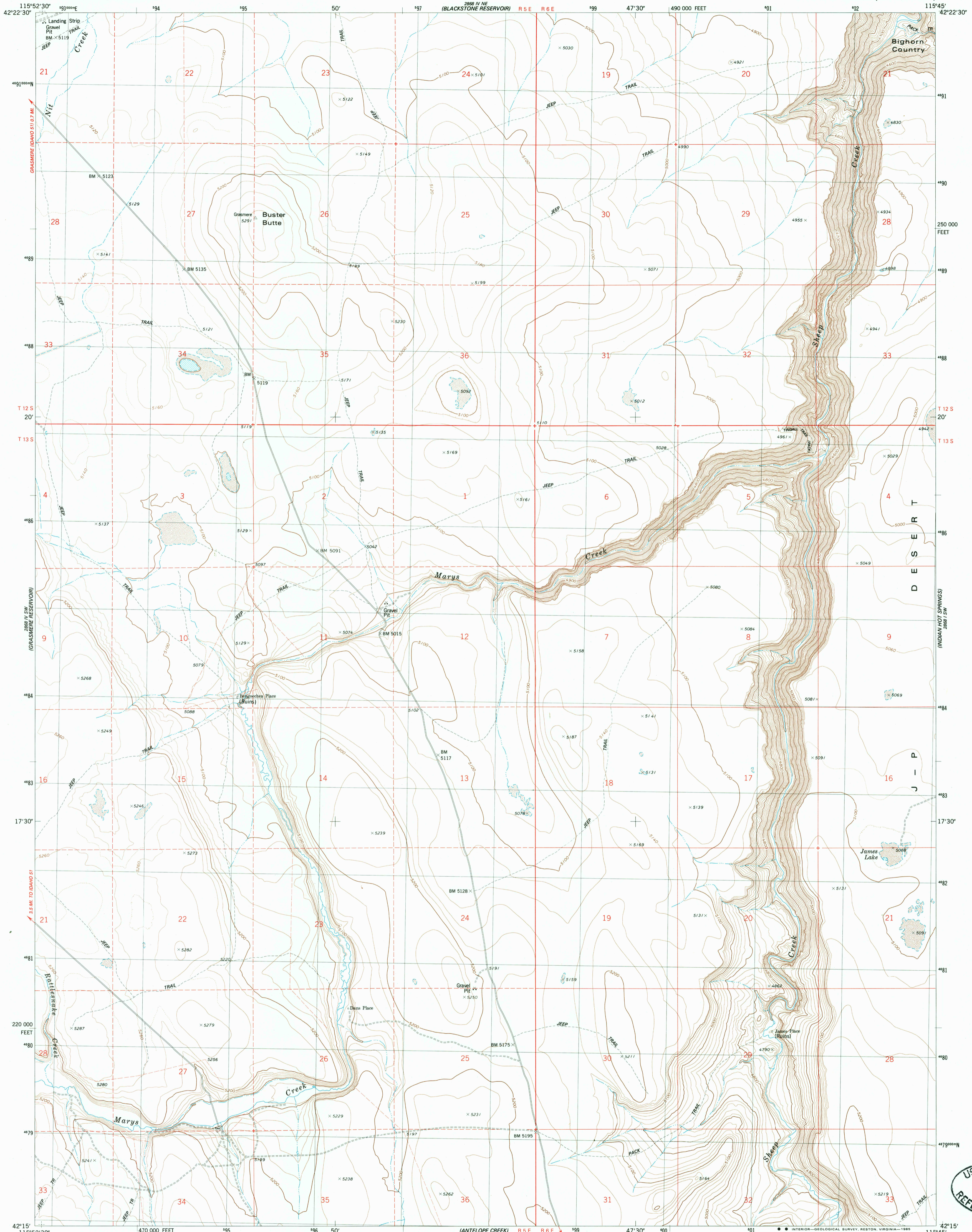


2868 IV NW
(GRASSMERE)

UNITED STATES
DEPARTMENT OF THE INTERIOR
GEOLOGICAL SURVEY

BUSTER BUTTE QUADRANGLE
IDAHO-OWYHEE CO.
7.5 MINUTE SERIES (TOPOGRAPHIC)

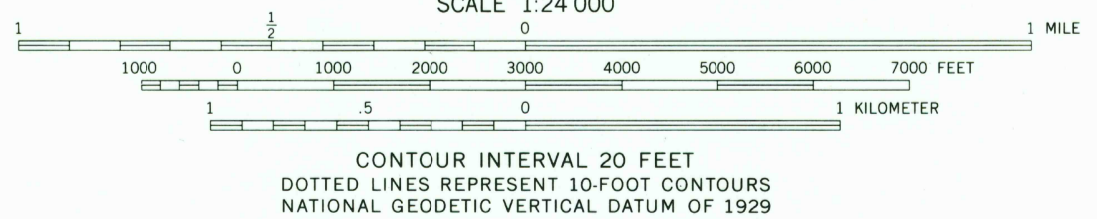
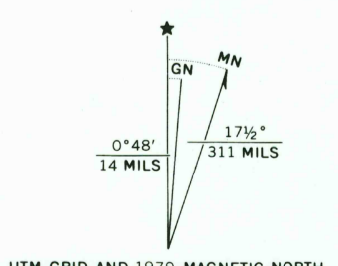
2868 IV NE
(CANE DRAWN)



Mapped, edited, and published by the Geological Survey

Control by USGS and NOS/NOAA
Topography by photogrammetric methods from aerial
photographs taken 1973. Field checked 1975. Map edited 1979
Projection and 10,000-foot grid ticks: Idaho coordinate
system, west zone (transverse Mercator)
1000-meter Universal Transverse Mercator grid, zone 11
1927 North American Datum

To place on the predicted North American Datum 1983
move the projection lines 14 meters north and
76 meters east as shown by dashed corner ticks
Fine red dashed lines indicate selected fence and field lines
where generally visible on aerial photographs
This information is unchecked



ROAD CLASSIFICATION

Primary highway, hard surface	Light-duty road, hard or improved surface
Secondary highway, hard surface	Unimproved road
Interstate Route	U.S. Route
	State Route



THIS MAP COMPLIES WITH NATIONAL MAP ACCURACY STANDARDS
FOR SALE BY U.S. GEOLOGICAL SURVEY, DENVER, COLORADO 80225, OR RESTON, VIRGINIA 22092
A FOLDER DESCRIBING TOPOGRAPHIC MAPS AND SYMBOLS IS AVAILABLE ON REQUEST

BUSTER BUTTE, IDAHO
42115-C7-TF-024

1979

DMA 2868 IV SE--SERIES V683

USGS NMD RESEARCH
NOV 07 1985
REFERENCE COLLECTION

(BLACKSTONE)
2868 IV NW

(TRIGGER LANE)
2868 IV NE