

114°45' 42'30" 40' 1780 000 FEET (WEST) 114°37'30" 45°22'30"

1 350 000 FEET (CENTRAL)

1 350 000 FEET (WEST)

5025000m N

20'

20'

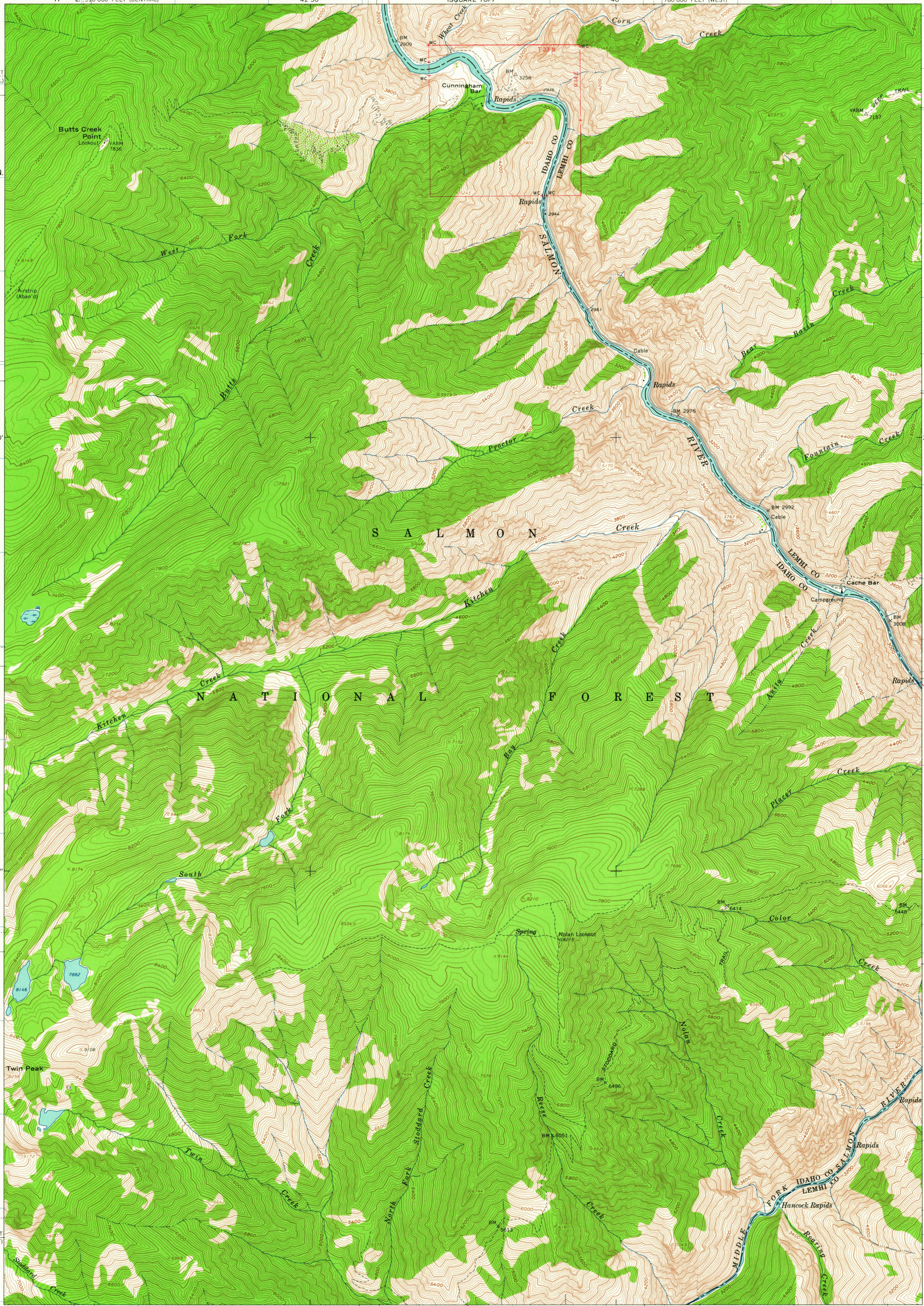
17'30"

17'30"

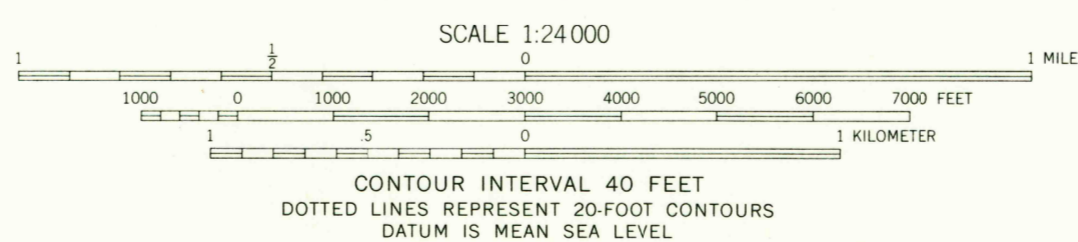
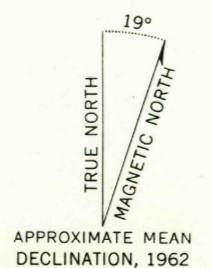
1 310 000 FEET (WEST)

1 310 000 FEET (CENTRAL)

45°15' 114°45' 1760 000 FEET (WEST) 42'30" 40' 1 330 000 FEET (CENTRAL) 114°37'30" 45°15'



Mapped, edited, and published by the Geological Survey
Control by USGS and USC&GS
Topography by photogrammetric methods from aerial
photographs taken 1957. Field checked 1962
Polyconic projection. 1927 North American datum
10,000-foot grids based on Idaho coordinate system,
west and central zones
1000-meter Universal Transverse Mercator grid ticks,
zone 11, shown in blue
Where omitted, land lines have not been established



USGS
Historical File
Topographic Division

ROAD CLASSIFICATION
Light-duty ————— Unimproved dirt - - - - -



BUTTS CREEK POINT, IDAHO
N4515—W11437.5/7.5

THIS MAP COMPLIES WITH NATIONAL MAP ACCURACY STANDARDS
FOR SALE BY U. S. GEOLOGICAL SURVEY, DENVER 25, COLORADO OR WASHINGTON 25, D. C.
A FOLDER DESCRIBING TOPOGRAPHIC MAPS AND SYMBOLS IS AVAILABLE ON REQUEST

1962

FEB 19 1964

2690