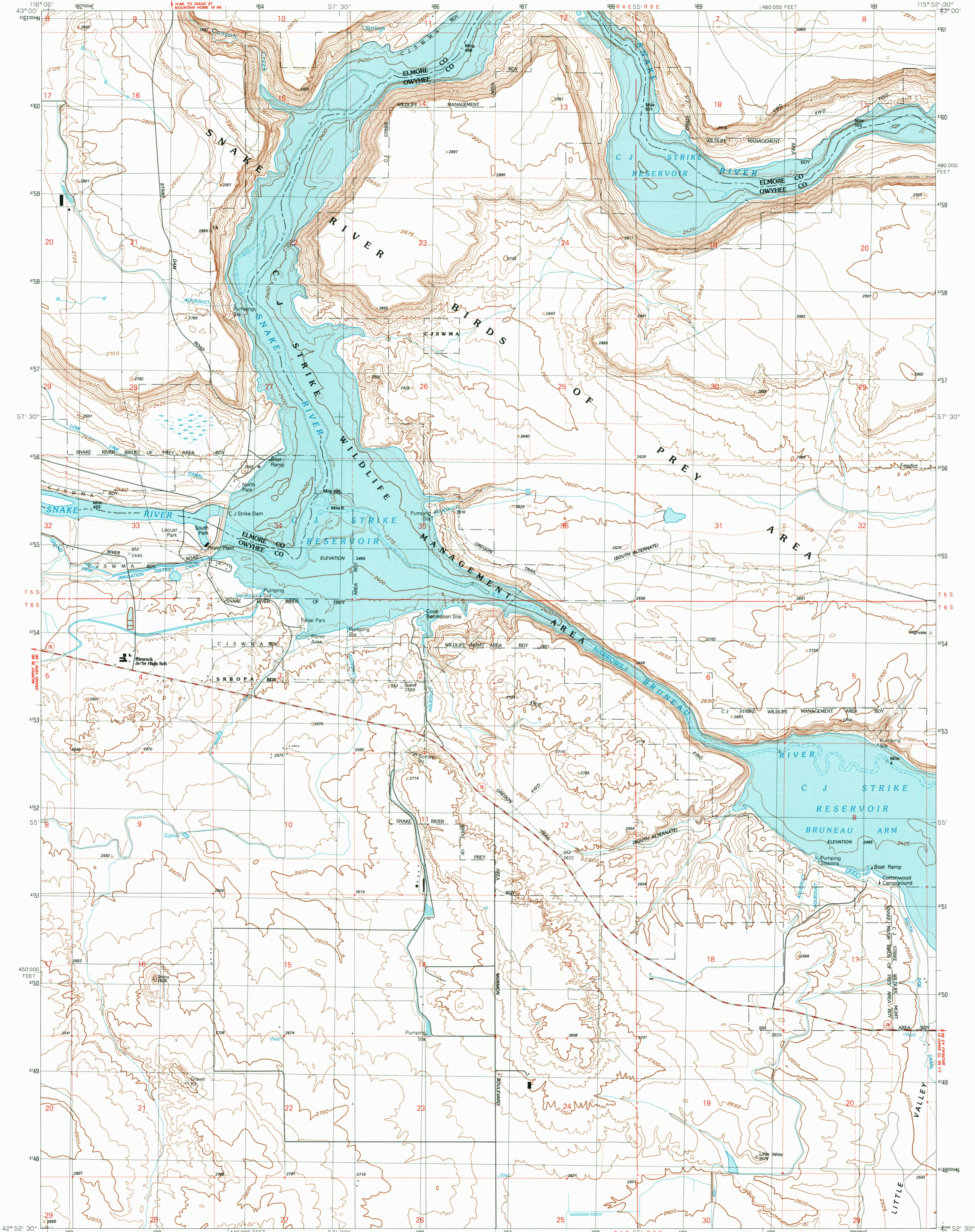
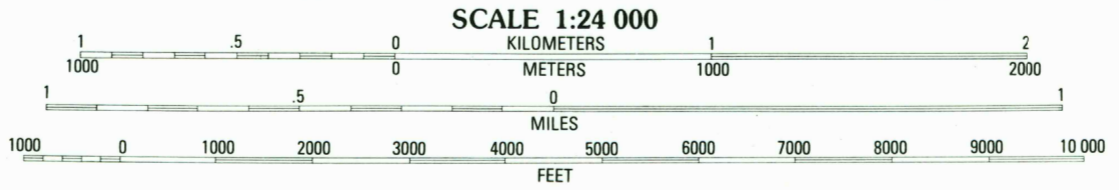
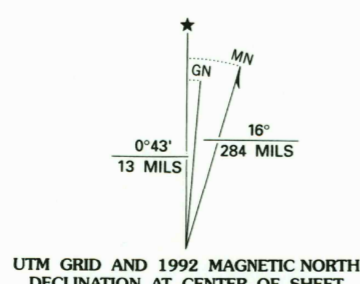


DEPARTMENT OF THE INTERIOR
UNITED STATES GEOLOGICAL SURVEY

C. J. STRIKE DAM QUADRANGLE
IDAHO
7.5 MINUTE SERIES (TOPOGRAPHIC)

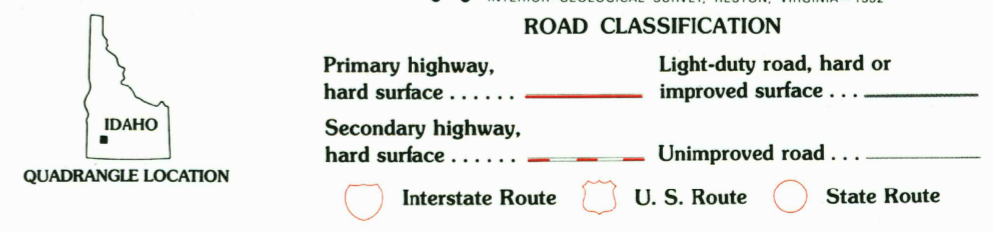


Produced by the United States Geological Survey
Control by USGS and NOS/NOAA
Compiled from aerial photographs taken 1946. Revised from aerial photographs taken 1987. Field checked 1990. Map edited 1992
North American Datum of 1927 (NAD 27). Projection and 10 000-foot grid ticks: Idaho Coordinate System, west zone (Transverse Mercator). 1000-meter Universal Transverse Mercator grid, zone 11
The difference between NAD 27 and North American Datum of 1983 (NAD 83) for 7.5 minute intersections is given in USGS Bulletin 1875. The NAD 83 is shown by dashed corner ticks
There may be private inholdings within the boundaries of the National or State reservations shown on this map
Fine red dashed lines indicate selected fence and field lines where generally visible on aerial photographs. This information is unchecked



CONTOUR INTERVAL 25 FEET
NATIONAL GEODETIC VERTICAL DATUM OF 1929
TO CONVERT FEET TO METERS MULTIPLY BY 0.3048
TO CONVERT METERS TO FEET MULTIPLY BY 3.28084

THIS MAP COMPLIES WITH NATIONAL MAP ACCURACY STANDARDS
FOR SALE BY U.S. GEOLOGICAL SURVEY
DENVER, COLORADO 80225 OR RESTON, VIRGINIA 22092
A FOLDER DESCRIBING TOPOGRAPHIC MAPS AND SYMBOLS IS AVAILABLE ON REQUEST



1	2	3
4	5	6
7	8	

C. J. STRIKE DAM, IDAHO
42115-H8-TF-024
1992

DMA 2869 IV NW-SERIES 19893

