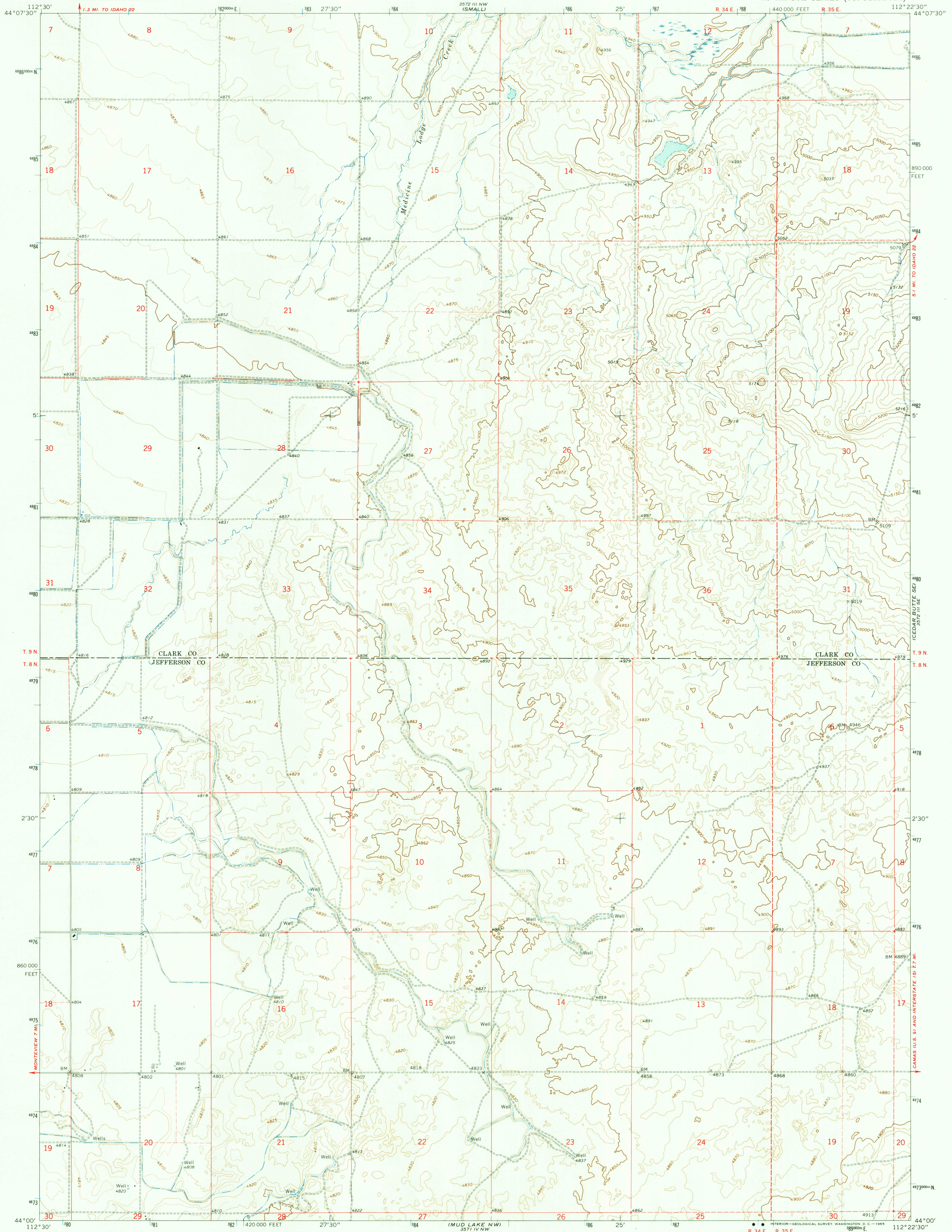
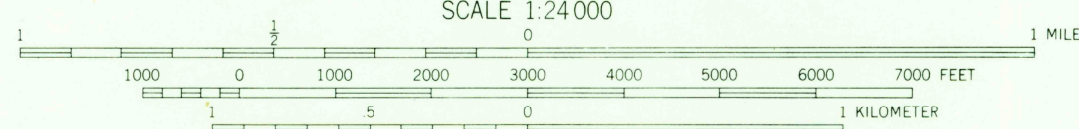
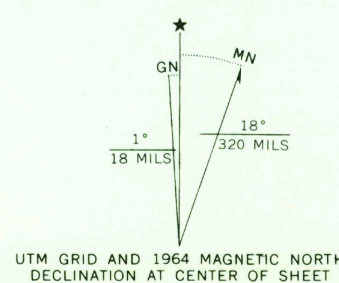


UNITED STATES  
DEPARTMENT OF THE INTERIOR  
GEOLOGICAL SURVEY

CEDAR BUTTE SW QUADRANGLE  
IDAHO  
7.5 MINUTE SERIES (TOPOGRAPHIC)



Mapped, edited, and published by the Geological Survey  
Control by USGS and USC&GS  
Topography by photogrammetric methods from aerial  
photographs taken 1959 and planetable surveys 1964  
Polyconic projection. 1927 North American datum  
10,000-foot grid based on Idaho coordinate system,  
east zone  
1000-meter Universal Transverse Mercator grid ticks,  
zone 12, shown in blue  
Fine red dashed lines indicate selected fence lines



CONTOUR INTERVAL 10 FEET  
DOTTED LINES REPRESENT 5-FOOT CONTOURS  
DATUM IS MEAN SEA LEVEL

THIS MAP COMPLIES WITH NATIONAL MAP ACCURACY STANDARDS  
FOR SALE BY U. S. GEOLOGICAL SURVEY, DENVER, COLORADO 80225, OR WASHINGTON, D. C. 20542  
A FOLDER DESCRIBING TOPOGRAPHIC MAPS AND SYMBOLS IS AVAILABLE ON REQUEST

USGS  
Historical File  
Topographic Division

ROAD CLASSIFICATION  
Light-duty \_\_\_\_\_ Unimproved dirt \_\_\_\_\_

U.S.G.S.  
FILE COPY  
TOPOGRAPHIC DIVISION

QUADRANGLE LOCATION  
CEDAR BUTTE SW, IDAHO  
N4400 - W11222.5/7.5

1964  
AMS 3572 III SW - SERIES V893

JAN 8 1966  
2240