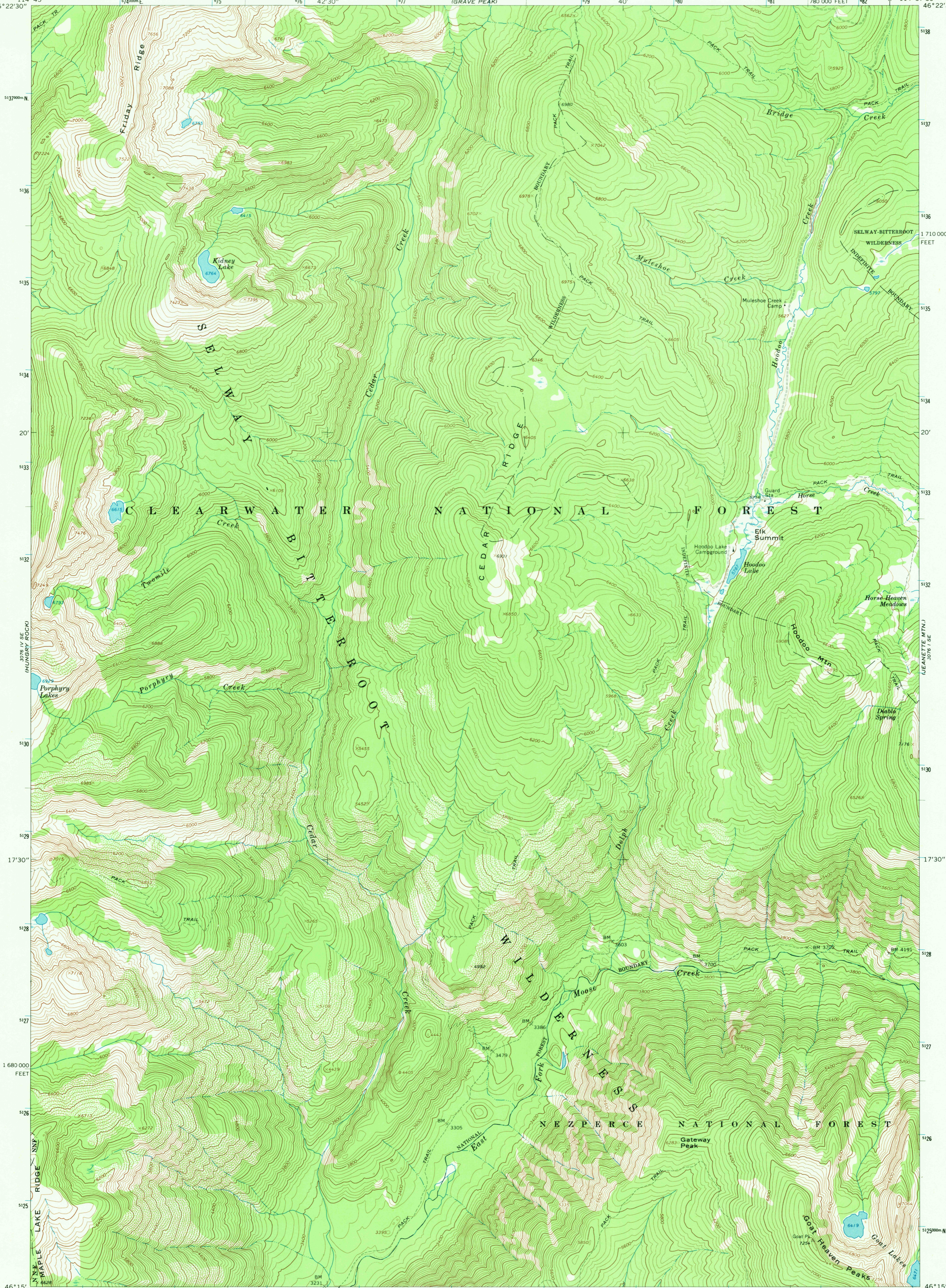
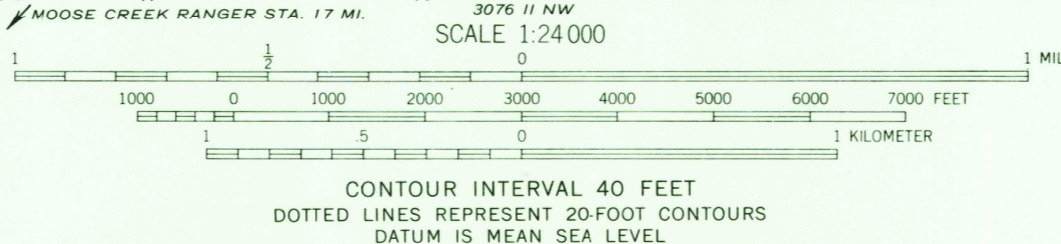
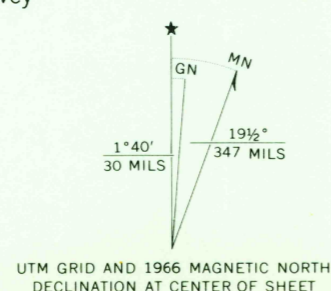


114°45' 46°22'30" 114°37'30" 46°22'30"



Mapped, edited, and published by the Geological Survey
Control by USGS and USC&GS
Topography by photogrammetric methods from aerial
photographs taken 1965. Field checked 1966
Polyconic projection. 1927 North American datum
10,000-foot grid based on Idaho coordinate system,
west zone
1000-meter Universal Transverse Mercator grid ticks,
zone 11, shown in blue
Land lines have not been established in this area



USGS
Historical File
Topographic Division



ROAD CLASSIFICATION
Unimproved dirt -----

CEDAR RIDGE, IDAHO
N4615—W11437.5/7.5

U.S.G.S.
FILE COPY
TOPOGRAPHIC DIVISION

2705
OCT 9 1969

THIS MAP COMPLIES WITH NATIONAL MAP ACCURACY STANDARDS
FOR SALE BY U.S. GEOLOGICAL SURVEY, DENVER, COLORADO 80225, OR WASHINGTON, D. C. 20242
A FOLDER DESCRIBING TOPOGRAPHIC MAPS AND SYMBOLS IS AVAILABLE ON REQUEST

1966

AMS 3076 1 SW—SERIES V893