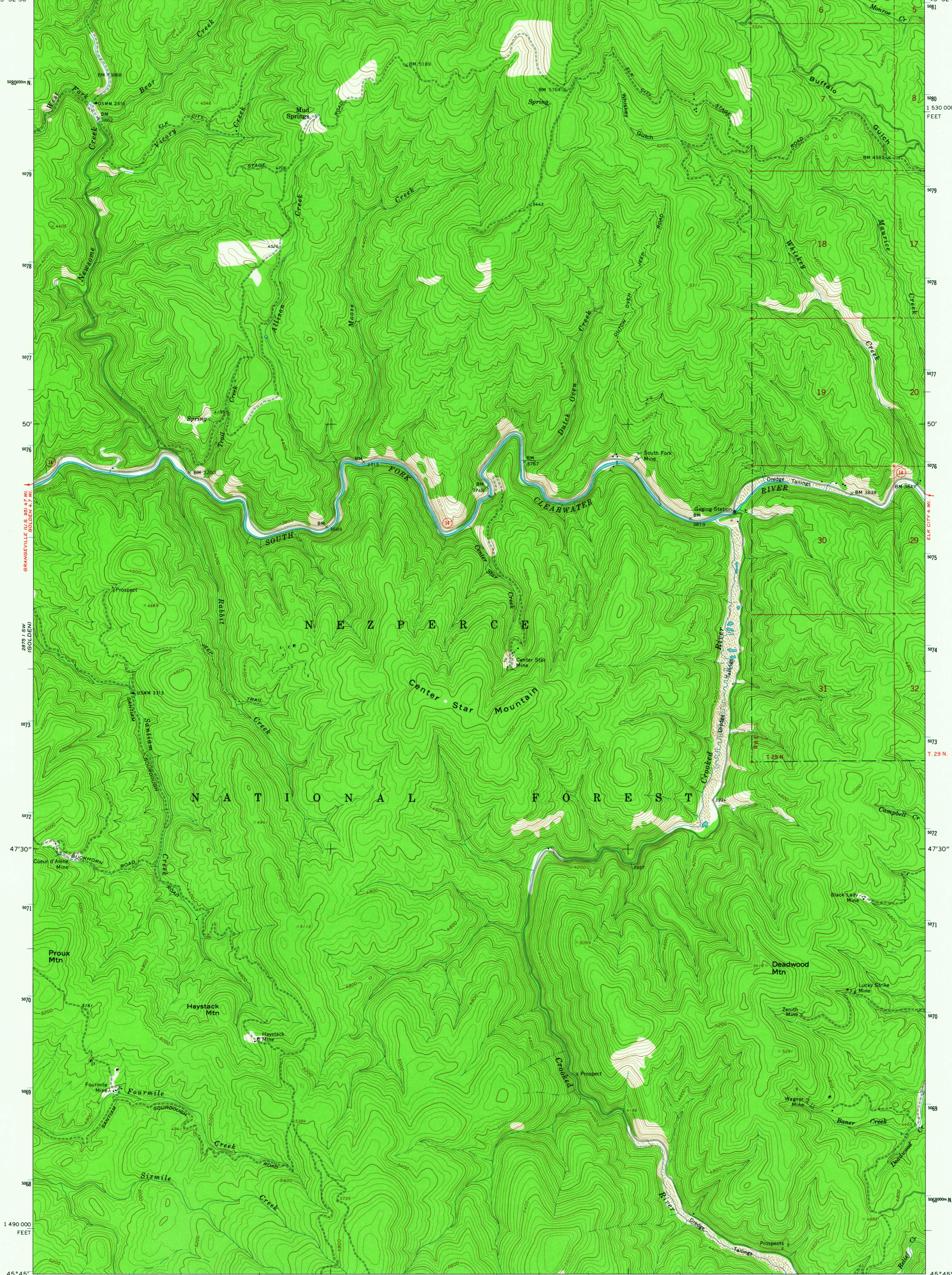
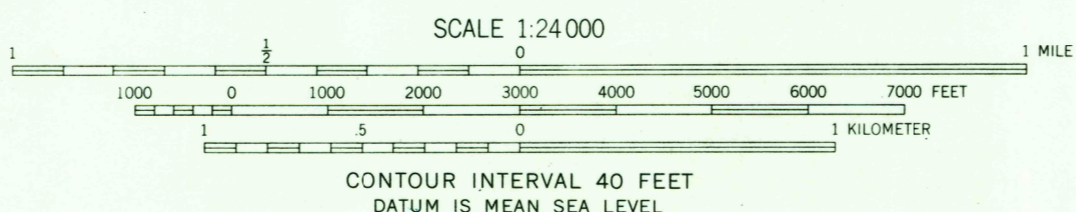
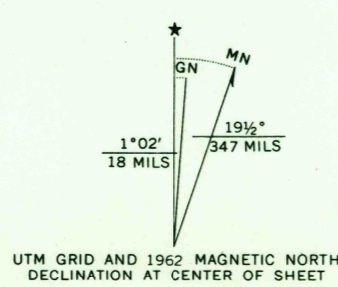


115°37'30" 1070000 E 408 409 35' 410 411 2875 1 NE (IRON MTN.) ELK SUMMIT LOOKOUT 0.6 MI. 413 32'30" 414 R 8 E 415 560 000 FEET 416 115°30' 45°52'30" 581



Mapped by the U.S. Forest Service  
Edited and published by the Geological Survey  
Control by USGS, USC&GS, and U.S. Forest Service  
Topography by photogrammetric methods from aerial  
photographs taken 1958. Field checked by USGS 1962  
Polyconic projection. 1927 North American datum  
10,000-foot grid based on Idaho coordinate system, west zone  
1000-meter Universal Transverse Mercator grid ticks,  
zone 11, shown in blue  
Where omitted, land lines have not been established



ROAD CLASSIFICATION

Light-duty	Unimproved dirt
State Route	

FOR SALE BY U. S. GEOLOGICAL SURVEY, DENVER 25, COLORADO OR WASHINGTON 25, D. C.  
A FOLDER DESCRIBING TOPOGRAPHIC MAPS AND SYMBOLS IS AVAILABLE ON REQUEST

CENTER STAR MTN., IDAHO  
N4545-W11530/7.5  
1962  
AMS 2875 1 SE-SERIES V893

U.S.G.S. FILE COPY TOPOGRAPHIC DIVISION  
APR 28 1964

2675