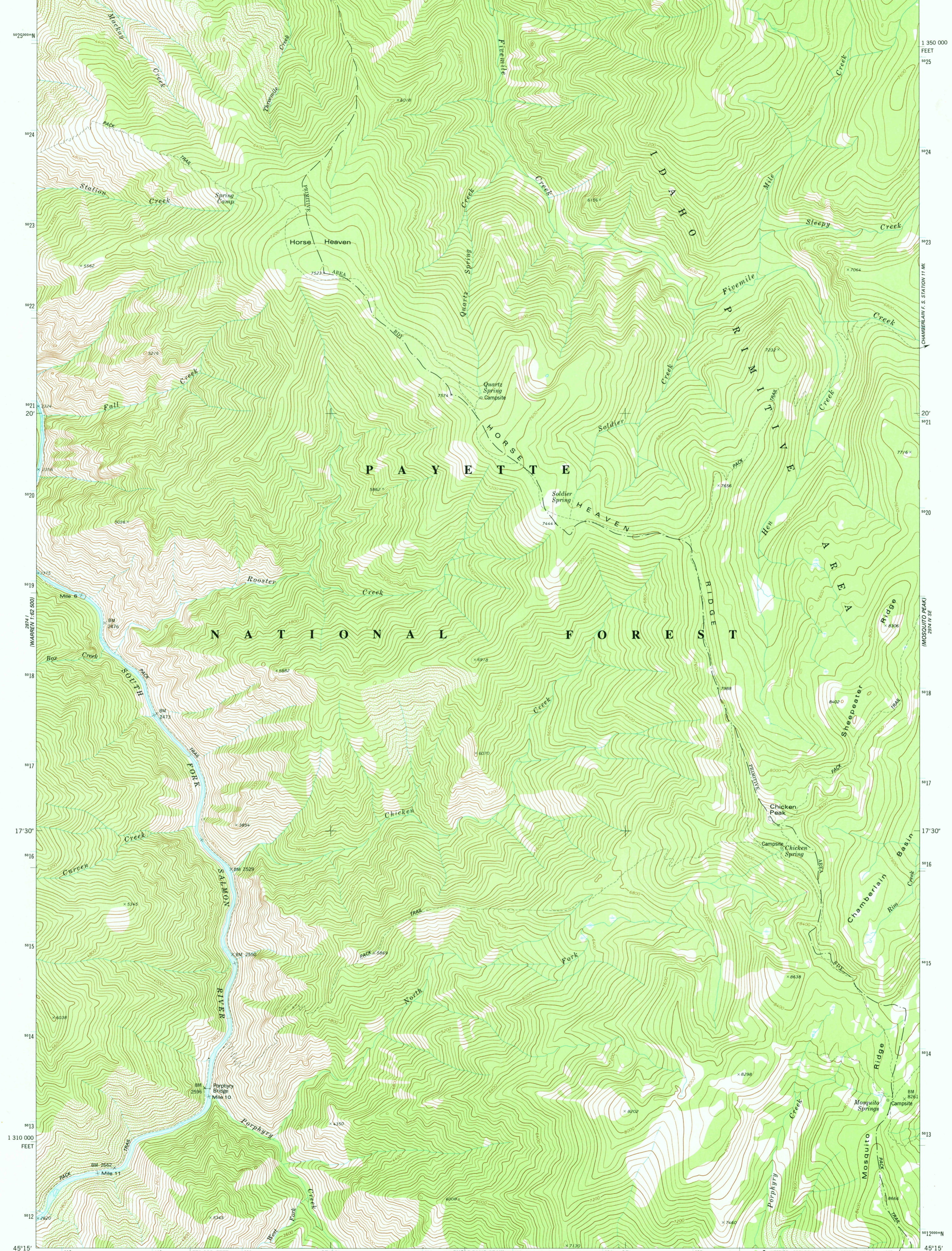
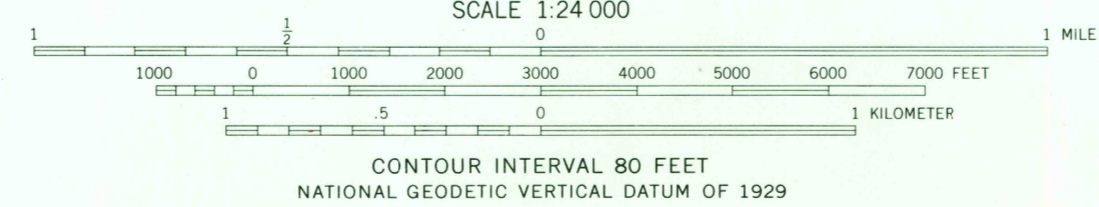
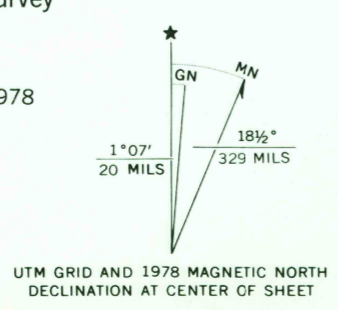


115°30' 18°00'E 19 20 27°30' 21 22 2974 N NW (FIVEMILE BAR) 23 25' 590 000 FEET 26 27 115°22'30'



Mapped, edited, and published by the Geological Survey
Control by USGS and NOS/NOAA
Topography by photogrammetric methods from aerial
photographs taken 1972. Field checked 1974. Map edited 1978
Projection and 10,000-foot grid ticks: Idaho coordinate
system, west zone (transverse Mercator)
1000-meter Universal Transverse Mercator grid ticks,
zone 11, shown in blue. 1927 North American datum
Land lines have not been established in this area



ROAD CLASSIFICATION
Trails

THIS MAP COMPLIES WITH NATIONAL MAP ACCURACY STANDARDS
FOR SALE BY U.S. GEOLOGICAL SURVEY, DENVER, COLORADO 80225 OR RESTON, VIRGINIA 22092
A FOLDER DESCRIBING TOPOGRAPHIC MAPS AND SYMBOLS IS AVAILABLE ON REQUEST

USGS
Historical File
Topographic Division

CHICKEN PEAK, IDAHO
N4515-W11522.5/7.5
1978
AMS 2974 IV SW—SERIES V893

DEC 18 1978

2850