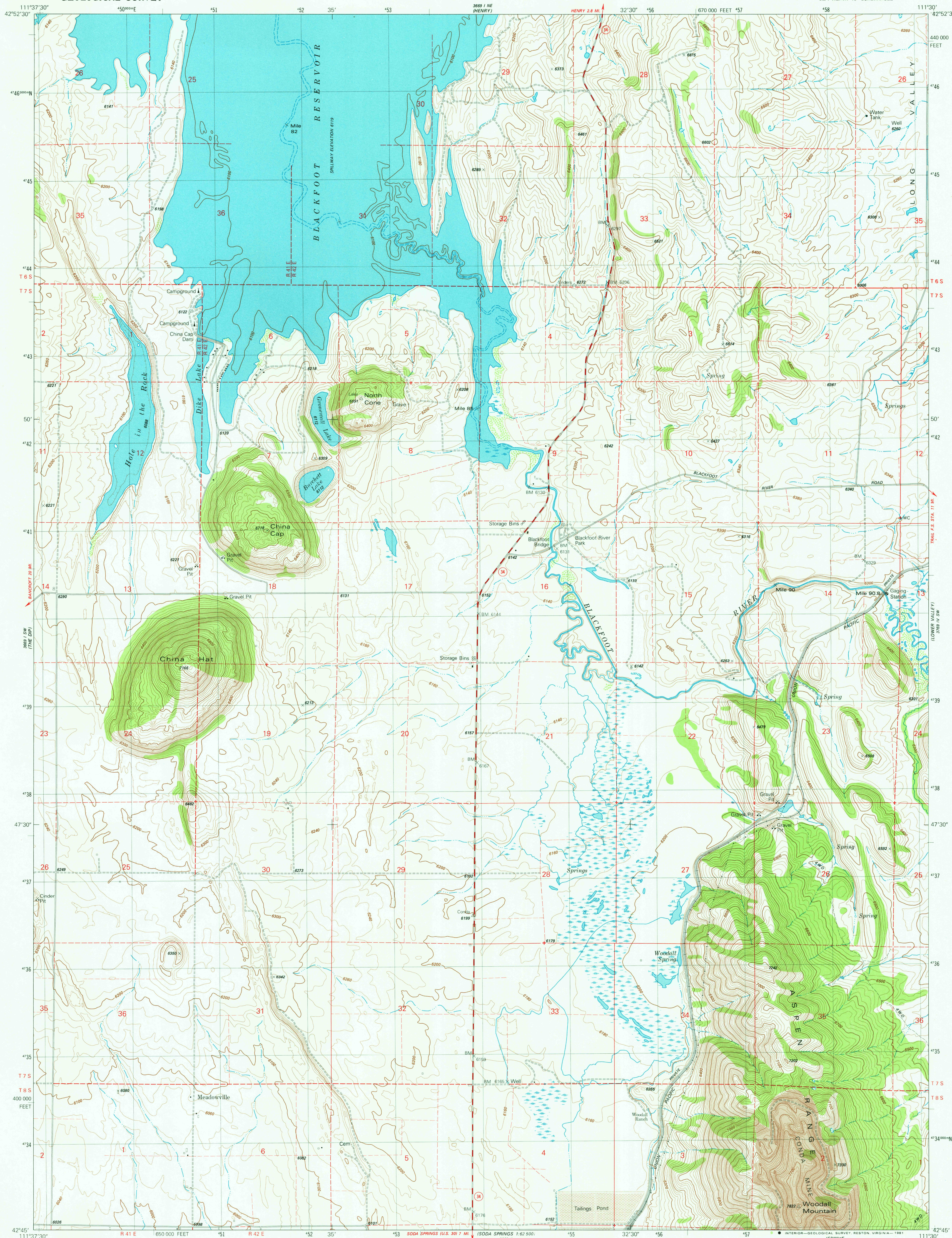
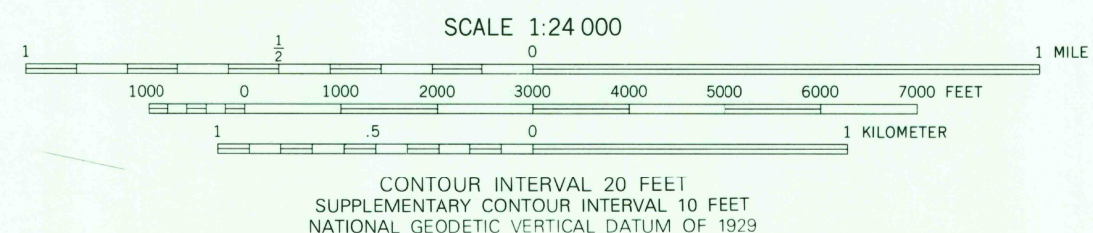
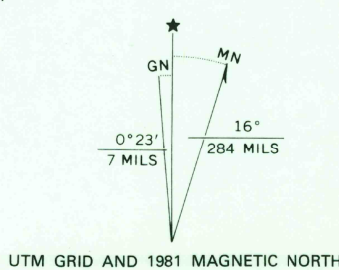


UNITED STATES
DEPARTMENT OF THE INTERIOR
GEOLOGICAL SURVEY

CHINA HAT QUADRANGLE
IDAHO-CARIBOU CO.
7.5 MINUTE SERIES (TOPOGRAPHIC)
SE/4 HENRY 15' QUADRANGLE



Mapped, edited, and published by the Geological Survey
Control by USGS and NOS/NOAA
Topography by photogrammetric methods from aerial photographs
taken 1973. Field checked 1975. Map edited 1981
Selected topographic data compiled from USCE
Blackfoot Reservoir Map BF-05-1/1 dated 1966
Projection and 10,000-foot grid ticks: Idaho coordinate
system, east zone (transverse Mercator)
1000-meter Universal Transverse Mercator grid, zone 12
1927 North American Datum
To place on the predicted North American Datum 1983
move the projection lines 12 meters north and
64 meters east as shown by dashed corner ticks
Fine red dashed lines indicate selected fence and field lines
where generally visible on aerial photographs
This information is unchecked



ROAD CLASSIFICATION
Primary highway, hard surface
Secondary highway, hard surface
Unimproved road
Interstate Route
U. S. Route
State Route

CHINA HAT, IDAHO
SE/4 HENRY 15' QUADRANGLE
N4245-W1130/7.5
1981
DMA 3669 I SE-SERIES V893

THIS MAP COMPLIES WITH NATIONAL MAP ACCURACY STANDARDS
FOR SALE BY U. S. GEOLOGICAL SURVEY, DENVER, COLORADO 80225, OR RESTON, VIRGINIA 22092
A FOLDER DESCRIBING TOPOGRAPHIC MAPS AND SYMBOLS IS AVAILABLE ON REQUEST