

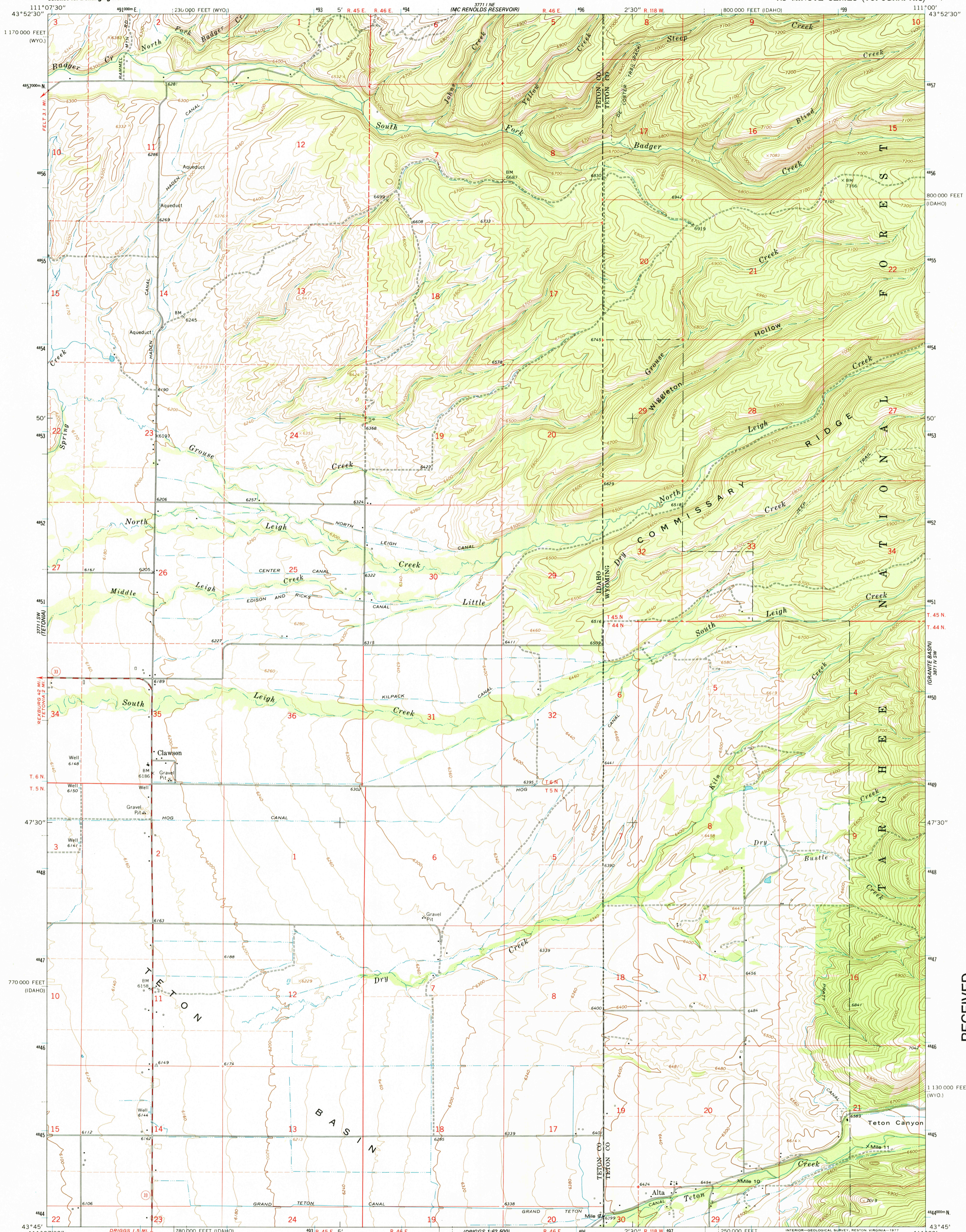


USGS
science for a changing world

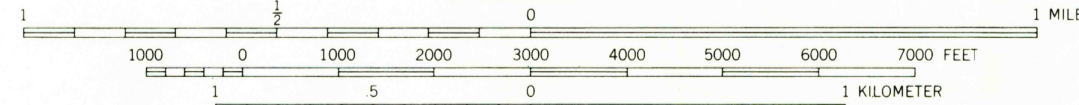
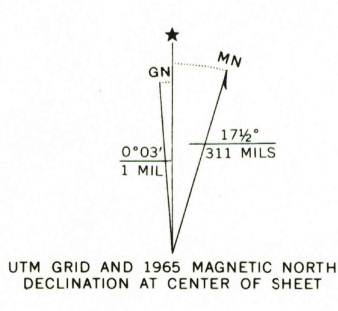
U.S. DEPARTMENT OF THE INTERIOR
U.S. GEOLOGICAL SURVEY

CLAWSON QUADRANGLE
IDAHO-WYOMING
7.5 MINUTE SERIES (TOPOGRAPHIC)

3871.0 NW
(RAMMEL WY)

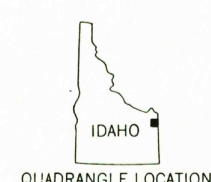


Mapped, edited, and published by the Geological Survey
Control by USGS and USC&GS
Topography by photogrammetric methods from aerial
photographs taken 1963. Field checked 1965
Polyconic projection. 1927 North American datum
10,000-foot grids based on Idaho coordinate system,
east zone and Wyoming coordinate system, west zone
1000-meter Universal Transverse Mercator grid ticks,
zone 12, shown in blue
Where omitted, land lines have not been established
Fine red dashed lines indicate selected fence lines



CONTOUR INTERVAL 20 FEET
DOTTED LINES REPRESENT 10-FOOT CONTOURS
NATIONAL GEODETIC VERTICAL DATUM OF 1929

THIS MAP COMPLIES WITH NATIONAL MAP ACCURACY STANDARDS
FOR SALE BY U.S. GEOLOGICAL SURVEY, P.O. BOX 25286, DENVER, COLORADO 80225
A FOLDER DESCRIBING TOPOGRAPHIC MAPS AND SYMBOLS IS AVAILABLE ON REQUEST



ROAD CLASSIFICATION
Medium-duty ——— Light-duty ———
Unimproved dirt - - - - -
State Route ○

CLAWSON, IDAHO-WYO.
N4345-W11100/7.5
1965
AMS 3771 I SE-SERIES V893

RECEIVED
FEB 28 2002
HISTORICAL MAP ARCHIVES

