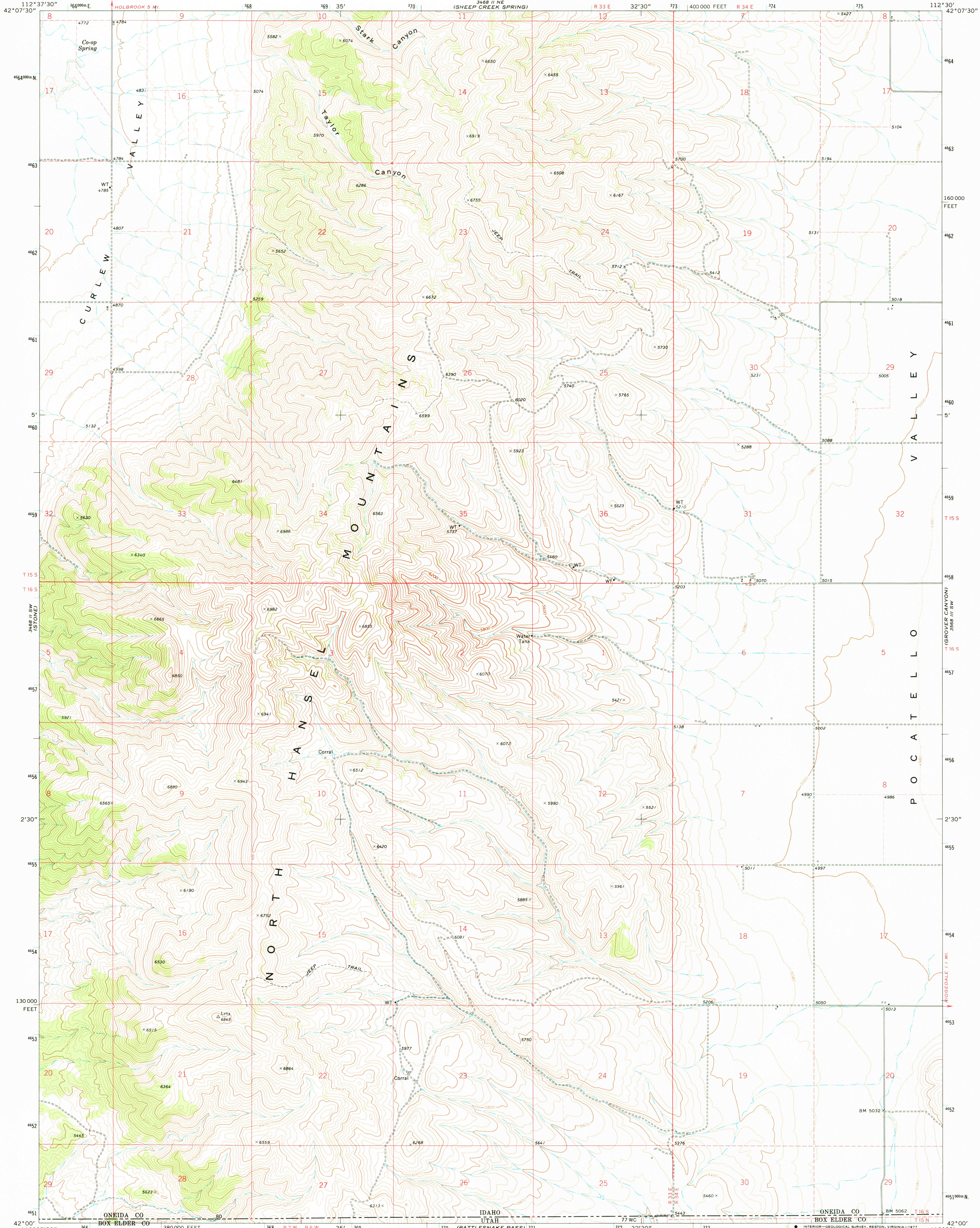
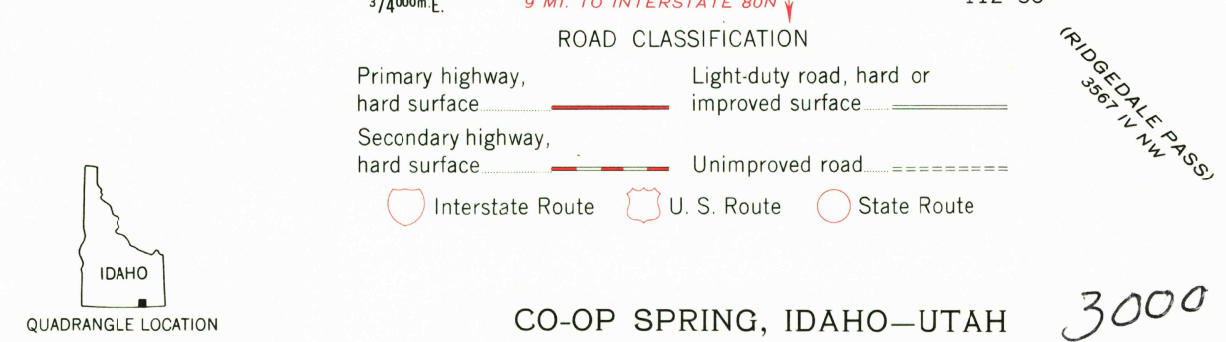
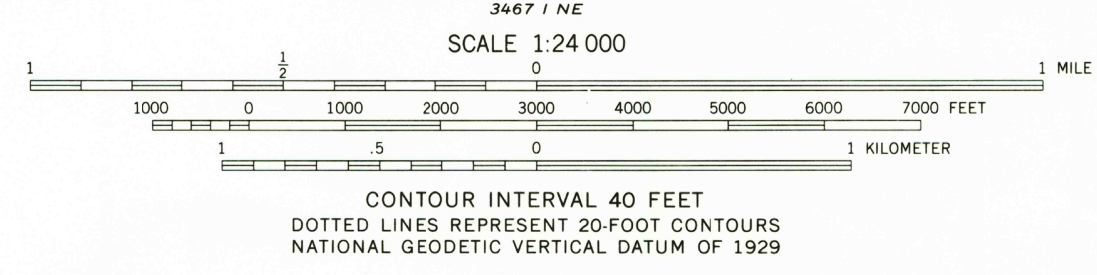
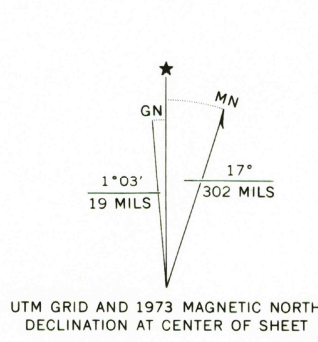


UNITED STATES  
DEPARTMENT OF THE INTERIOR  
GEOLOGICAL SURVEY

CO-OP SPRING QUADRANGLE  
IDAHO-UTAH  
7.5 MINUTE SERIES (TOPOGRAPHIC)



Mapped, edited, and published by the Geological Survey  
Control by USGS and NOS/NOAA  
Topography by photogrammetric methods from aerial photographs taken 1971. Field checked 1973  
Projection and 10,000-foot grid ticks: Idaho coordinate system, east zone (transverse Mercator)  
1000-meter Universal Transverse Mercator grid ticks, zone 12, shown in blue. 1927 North American datum  
Fine red dashed lines indicate selected fence lines  
Certain land lines are omitted because of insufficient data



THIS MAP COMPLIES WITH NATIONAL MAP ACCURACY STANDARDS  
FOR SALE BY U.S. GEOLOGICAL SURVEY, DENVER, COLORADO 80225, OR RESTON, VIRGINIA 22092  
A FOLDER DESCRIBING TOPOGRAPHIC MAPS AND SYMBOLS IS AVAILABLE ON REQUEST

USGS  
Historical File  
Topographic Division  
CO-OP SPRING, IDAHO-UTAH  
N4200-W11230/7.5  
1973  
AMS 3468 II SE-SERIES V893  
JAN 06 1978