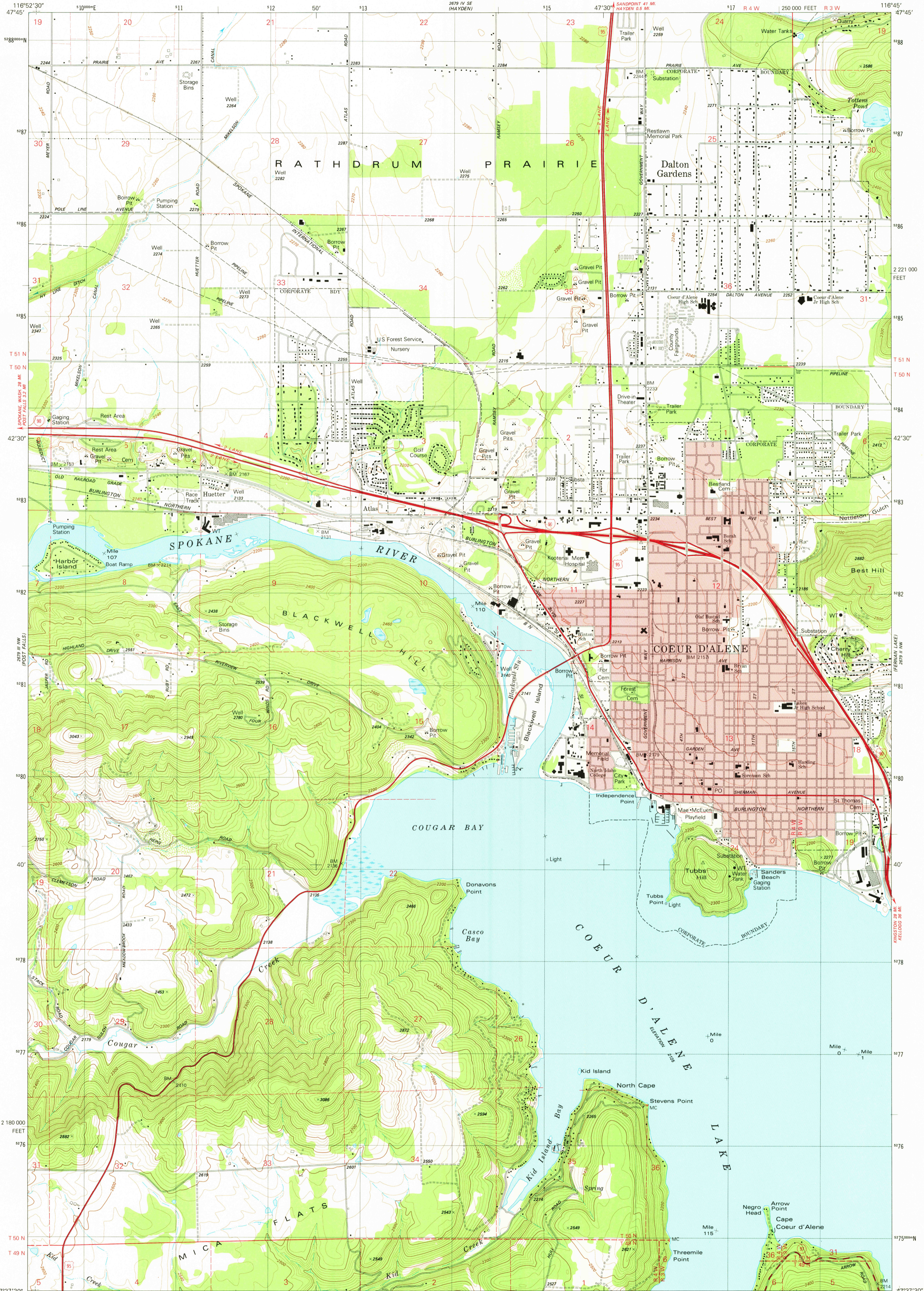
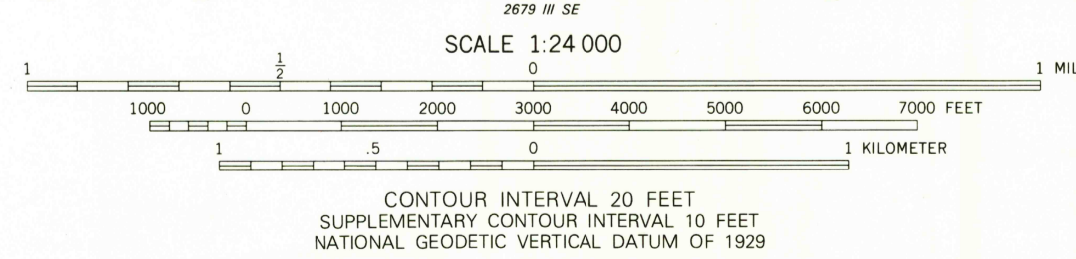


UNITED STATES
DEPARTMENT OF THE INTERIOR
GEOLOGICAL SURVEY

COEUR D'ALENE QUADRANGLE
IDAHO-KOOTENAI CO.
7.5 MINUTE SERIES (TOPOGRAPHIC)
NE/4 COEUR D'ALENE 15' QUADRANGLE



Mapped, edited, and published by the Geological Survey
Control by USGS and NOS/NOAA
Topography by photogrammetric methods from aerial photographs
taken 1975. Field checked 1977. Map edited 1981
Projection and 10,000-foot grid ticks: Idaho coordinate
system, west zone (transverse Mercator)
1000-meter Universal Transverse Mercator grid, zone 11
1927 North American Datum
To place on the predicted North American Datum 1983
move the projection lines 14 meters north and
78 meters east as shown by dashed corner ticks
Red tint indicates areas in which only landmark buildings are shown
Fine red dashed lines indicate selected fence and field lines
where generally visible on aerial photographs
This information is unchecked



ROAD CLASSIFICATION

Primary highway, hard surface
Secondary highway, hard surface
Unimproved road
Interstate Route
U. S. Route
State Route

COEUR D'ALENE, IDAHO
NE/4 COEUR D'ALENE 15' QUADRANGLE
N4737.5-W11645.7.5

1981

DMA 2679 III NE-SERIES V893

DEC 03 1982

2050