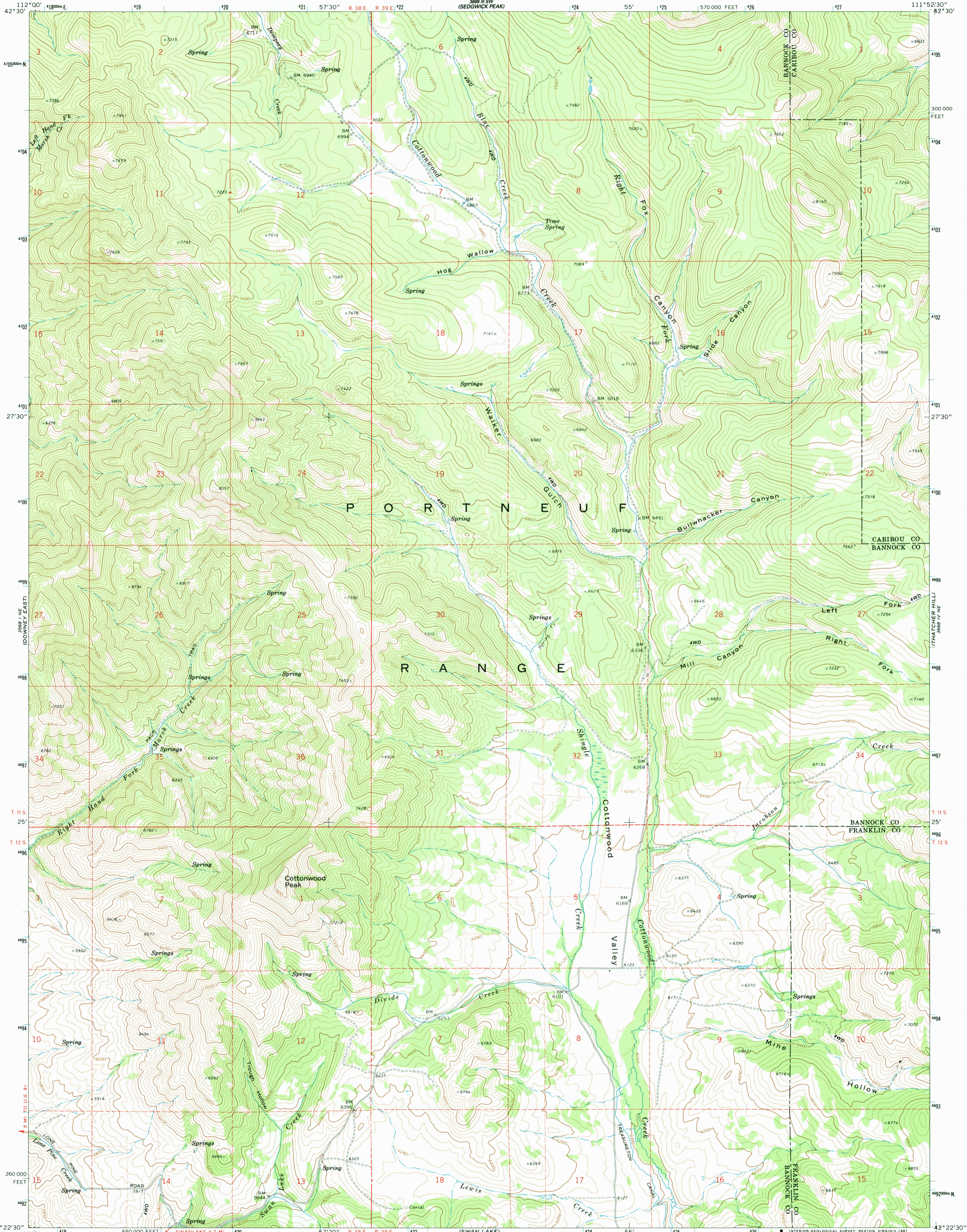
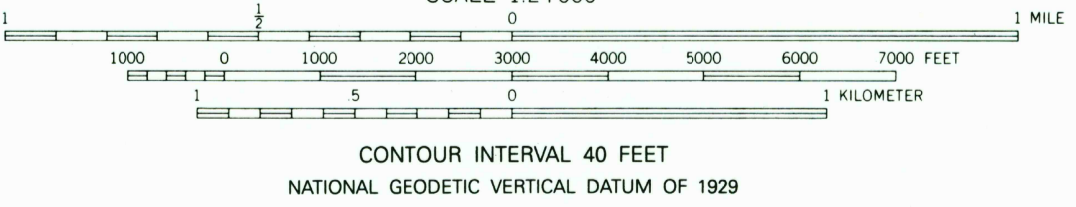
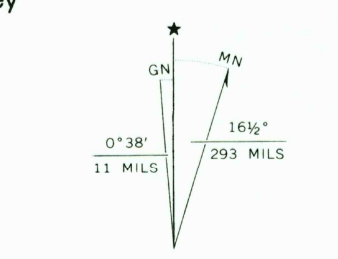


UNITED STATES
DEPARTMENT OF THE INTERIOR
GEOLOGICAL SURVEY

COTTONWOOD PEAK QUADRANGLE
IDAHO
7.5 MINUTE SERIES (TOPOGRAPHIC)



Mapped, edited, and published by the Geological Survey
Control by USGS and NOS/NOAA
Topography by photogrammetric methods from aerial photographs taken 1968. Field checked 1969
Polyconic projection. 1927 North American Datum
10,000-foot grid based on Idaho coordinate system, east zone
1000-meter Universal Transverse Mercator grid ticks, zone 12, shown in blue
The difference between 1927 North American Datum and North American Datum of 1983 (NAD 83) for 7.5 minute intersections is given in USGS Bulletin 1875. The NAD 83 is shown by dashed corner ticks
Fine red dashed lines indicate selected fence lines



CONTOUR INTERVAL 40 FEET
NATIONAL GEODETIC VERTICAL DATUM OF 1929

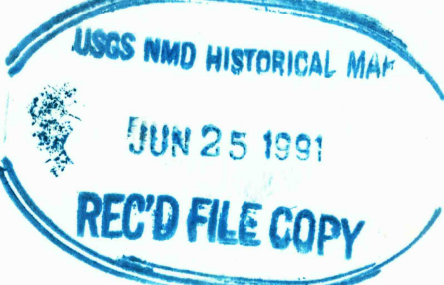
THIS MAP COMPLIES WITH NATIONAL MAP ACCURACY STANDARDS
FOR SALE BY U. S. GEOLOGICAL SURVEY
DENVER, COLORADO 80225, OR RESTON, VIRGINIA 22092
A FOLDER DESCRIBING TOPOGRAPHIC MAPS AND SYMBOLS IS AVAILABLE ON REQUEST

ROAD CLASSIFICATION

Primary highway, hard surface	Light-duty road, hard or improved surface
Secondary highway, hard surface	Unimproved road
Interstate Route	U. S. Route
	State Route



COTTONWOOD PEAK, IDAHO
42111-D8-TF-024
1969
PHOTOINSPECTED 1980
DMA 3668 IV NW-SERIES V893



Map photoinspected 1980
No major culture or drainage changes observed