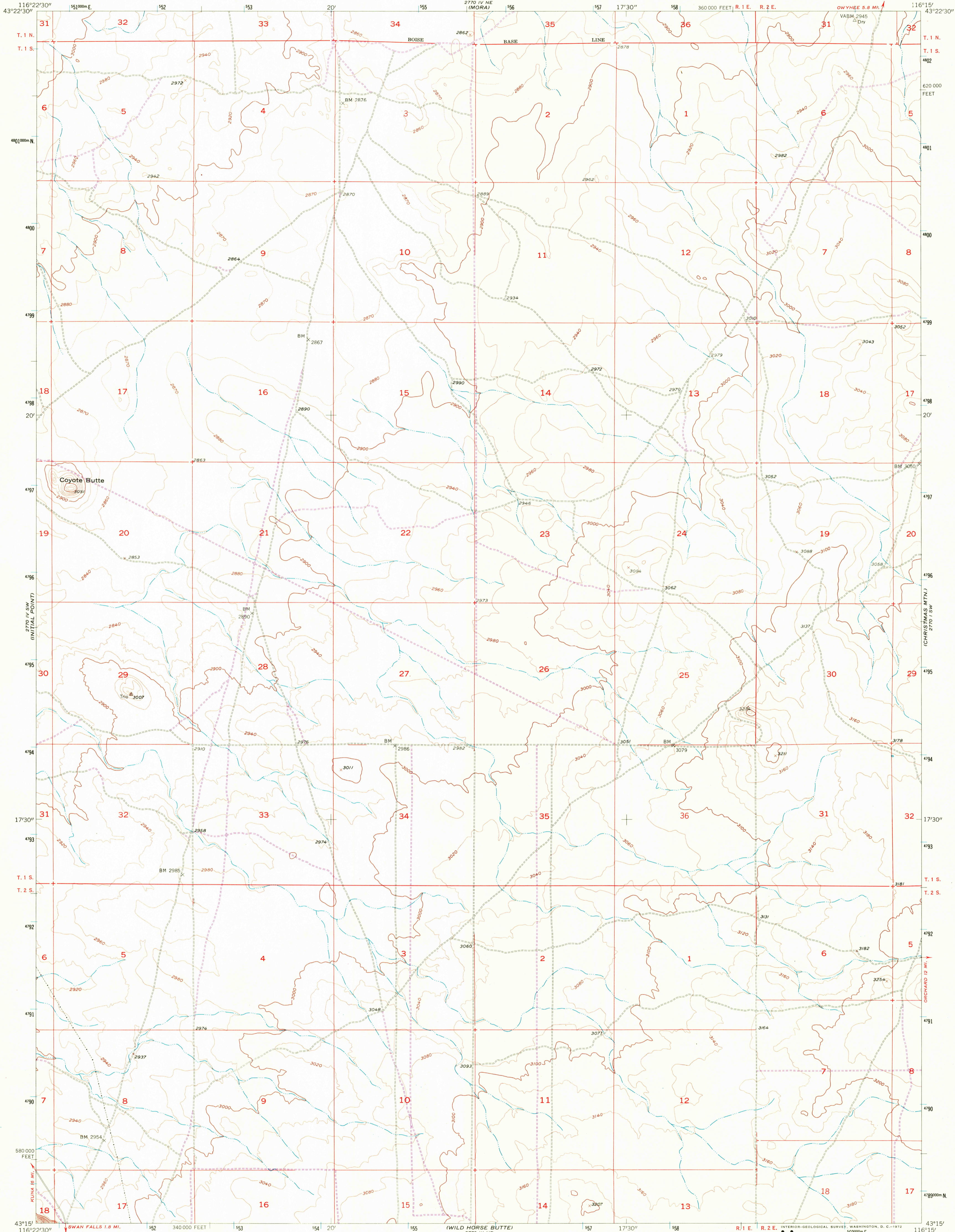


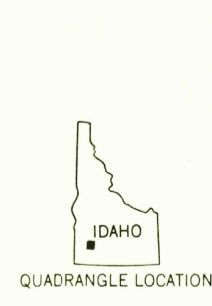
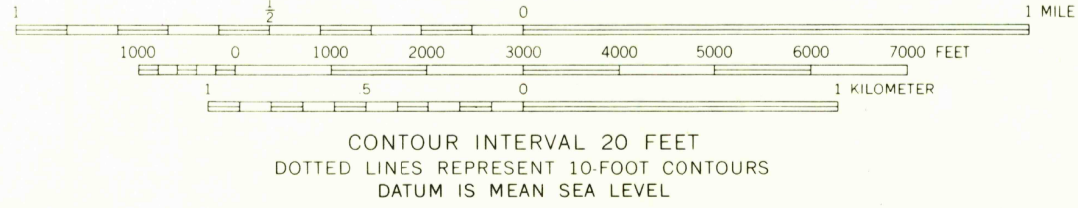
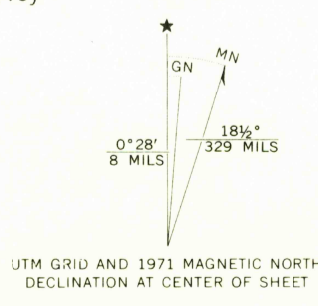
UNITED STATES
DEPARTMENT OF THE INTERIOR
GEOLOGICAL SURVEY

COYOTE BUTTE QUADRANGLE
IDAHO—ADA CO.
7.5 MINUTE SERIES (TOPOGRAPHIC)



Mapped, edited, and published by the Geological Survey
Control by USGS and US&GS

Topography from aerial photographs by Kelsch plottter
Aerial photographs taken 1954. Field check 1955
Polyconic projection, 1927 North American datum
10,000-foot grid based on Idaho coordinate system,
west zone
1000-meter Universal Transverse Mercator grid ticks,
zone 11, shown in blue
Revisions shown in purple compiled from aerial photographs
taken 1971. This information not field checked



ROAD CLASSIFICATION

| | |
|-------------|-----------------|
| Heavy-duty | Light-duty |
| Medium-duty | Unimproved dirt |

THIS MAP COMPLIES WITH NATIONAL MAP ACCURACY STANDARDS
FOR SALE BY U.S. GEOLOGICAL SURVEY, DENVER, COLORADO 80225, OR WASHINGTON, D.C. 20242
A FOLDER DESCRIBING TOPOGRAPHIC MAPS AND SYMBOLS IS AVAILABLE ON REQUEST

COYOTE BUTTE, IDAHO
N4315-W11615/7.5

1955
PHOTOREVISED 1971
AMS 2770 IV SE—SERIES V893

AUG 24 1972

USGS
Historical File
Topographic Division