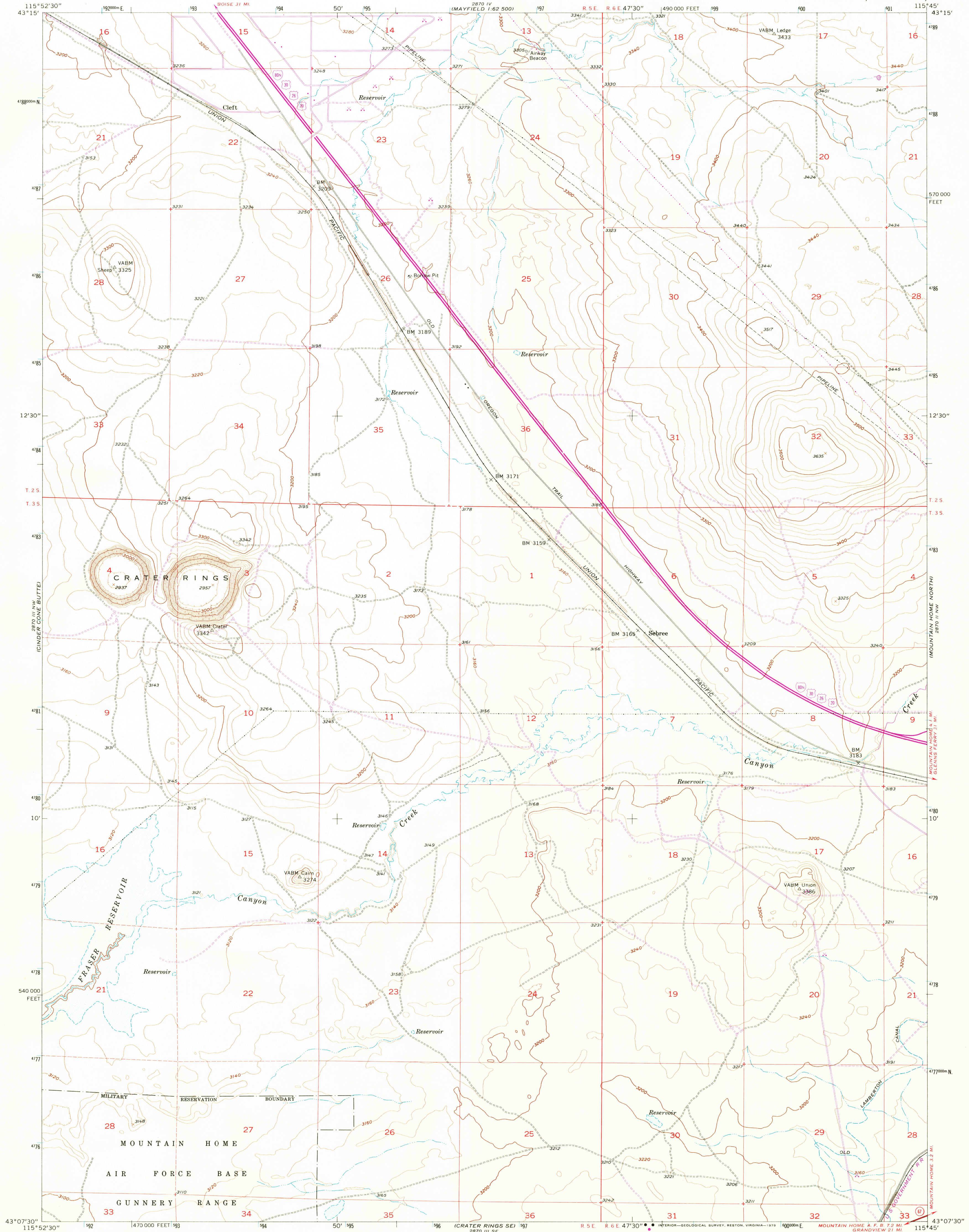




2870 IV
1:62,500
(DANFORTH PEAK)

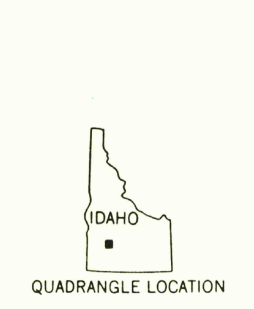
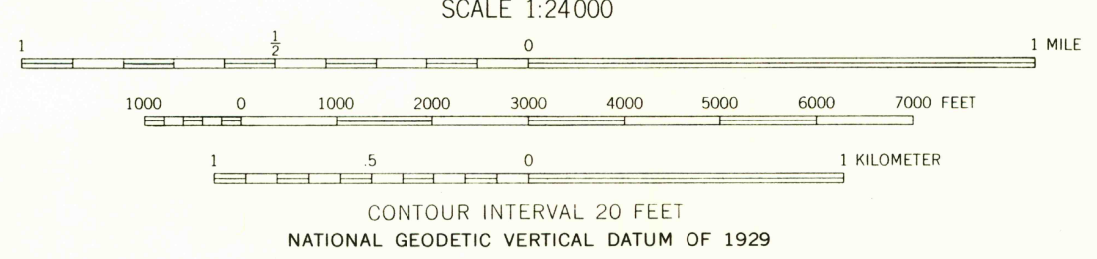
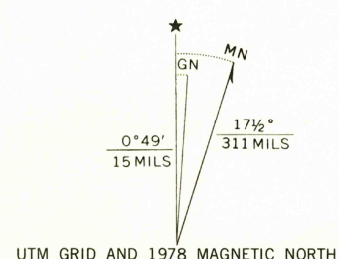


Mapped, edited, and published by the Geological Survey
Control by USGS and USC&GS

Topography from aerial photographs by Kelsh plotter
Aerial photographs taken 1954. Field check 1956
Polyconic projection. 1927 North American datum
10,000-foot grid based on Idaho coordinate system, west zone
1000-meter Universal Transverse Mercator grid ticks,
zone 11, shown in blue

Dashed land lines indicate approximate locations
There may be private inholdings within the boundaries of
the National or State reservations shown on this map

Revisions shown in purple compiled from aerial photographs
taken 1976 and other source data. This information not
field checked. Map edited 1978



ROAD CLASSIFICATION

| | |
|----------------------------------------------|------------------------------------------------|
| Primary highway, all weather, hard surface | Light-duty road, all weather, improved surface |
| Secondary highway, all weather, hard surface | Unimproved road, fair or dry weather |

○ Interstate Route □ U. S. Route ○ State Route

THIS MAP COMPLIES WITH NATIONAL MAP ACCURACY STANDARDS
FOR SALE BY U. S. GEOLOGICAL SURVEY, DENVER, COLORADO 80225, OR RESTON, VIRGINIA 22092
A FOLDER DESCRIBING TOPOGRAPHIC MAPS AND SYMBOLS IS AVAILABLE ON REQUEST

USGS
Historical File
Topographic Division
1956
PHOTOREVISED 1978
AMS 2870 III NE-SERIES V893

APR 26 1979

CRATER RINGS, IDAHO
N4307.5-W11545.7.5

2300