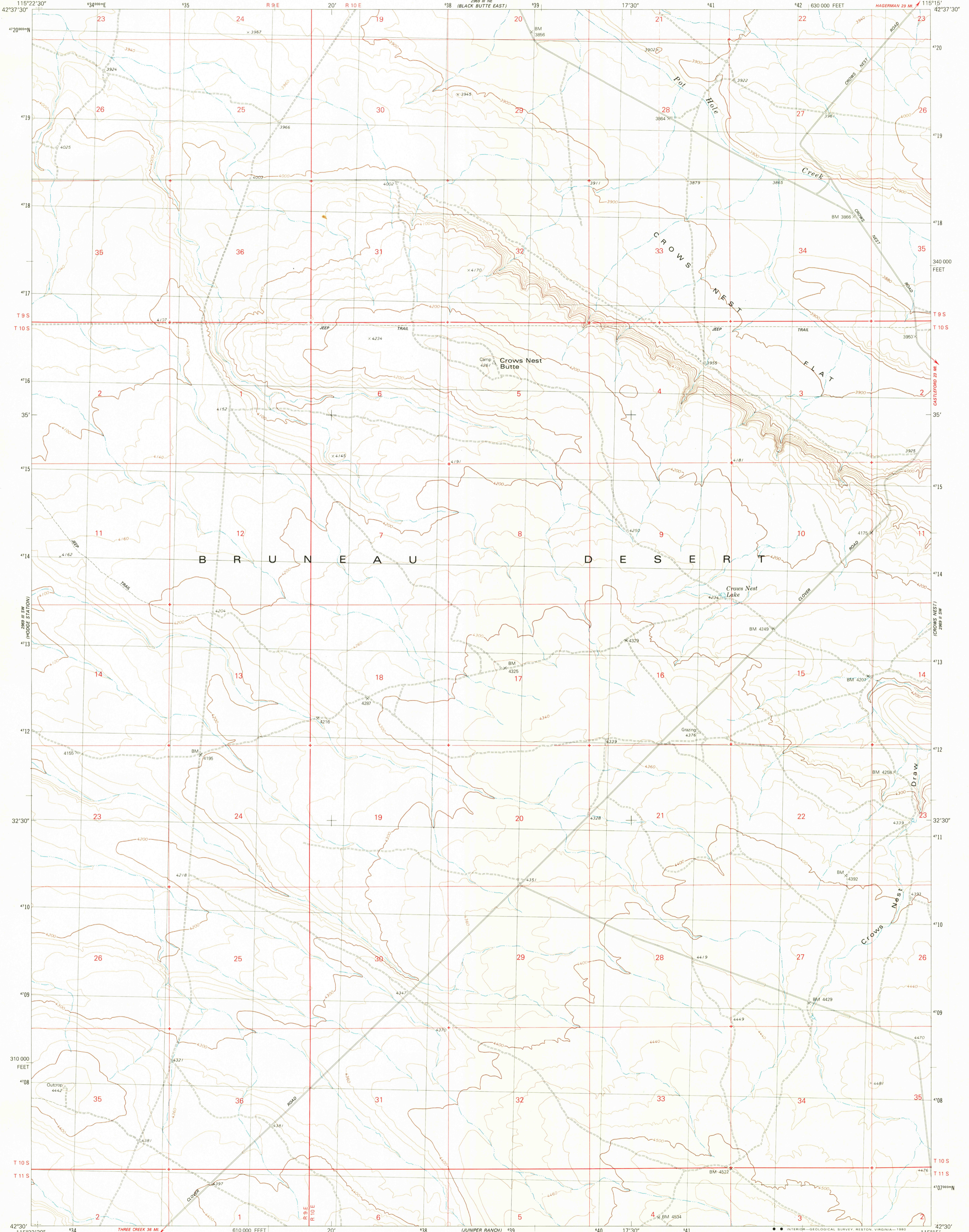


UNITED STATES  
DEPARTMENT OF THE INTERIOR  
GEOLOGICAL SURVEY

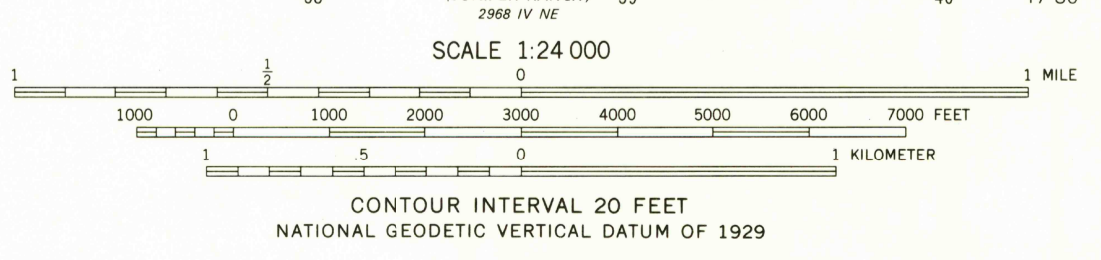
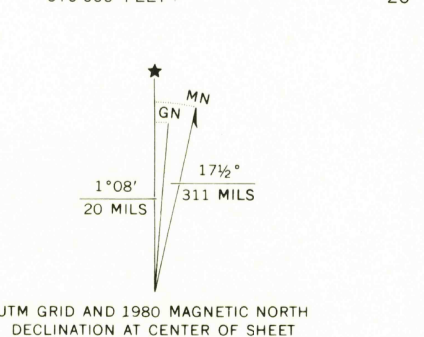
CROWS NEST BUTTE QUADRANGLE  
IDAHO-OWYHEE CO.  
7.5 MINUTE SERIES (TOPOGRAPHIC)



Mapped, edited, and published by the Geological Survey

Control by USGS and NOS/NOAA  
Topography by photogrammetric methods from aerial photographs taken 1974. Field checked 1975  
Map edited 1980

Projection and 10,000-foot grid ticks: Idaho coordinate system, west zone (transverse Mercator)  
1000-meter Universal Transverse Mercator grid, zone 11  
1927 North American Datum  
To place on the predicted North American Datum 1983 move the projection lines 14 meters north and 75 meters east as shown by dashed corner ticks  
Fine red dashed lines indicate selected fence lines where generally visible on aerial photographs  
This information is unchecke



CONTOUR INTERVAL 20 FEET  
NATIONAL GEODETIC VERTICAL DATUM OF 1929

THIS MAP COMPLIES WITH NATIONAL MAP ACCURACY STANDARDS  
FOR SALE BY U. S. GEOLOGICAL SURVEY, DENVER, COLORADO 80225, OR RESTON, VIRGINIA 22092  
A FOLDER DESCRIBING TOPOGRAPHIC MAPS AND SYMBOLS IS AVAILABLE ON REQUEST

ROAD CLASSIFICATION

Primary highway, hard surface	Light-duty road, hard or improved surface
Secondary highway, hard surface	Unimproved road
Interstate Route	U. S. Route
	State Route



USGS Historical File  
CROWS NEST BUTTE, IDAHO  
N4230-W11515/7.5  
1980

OCT - 3 1980

DMA 2969 III SE-SERIES V893

2250