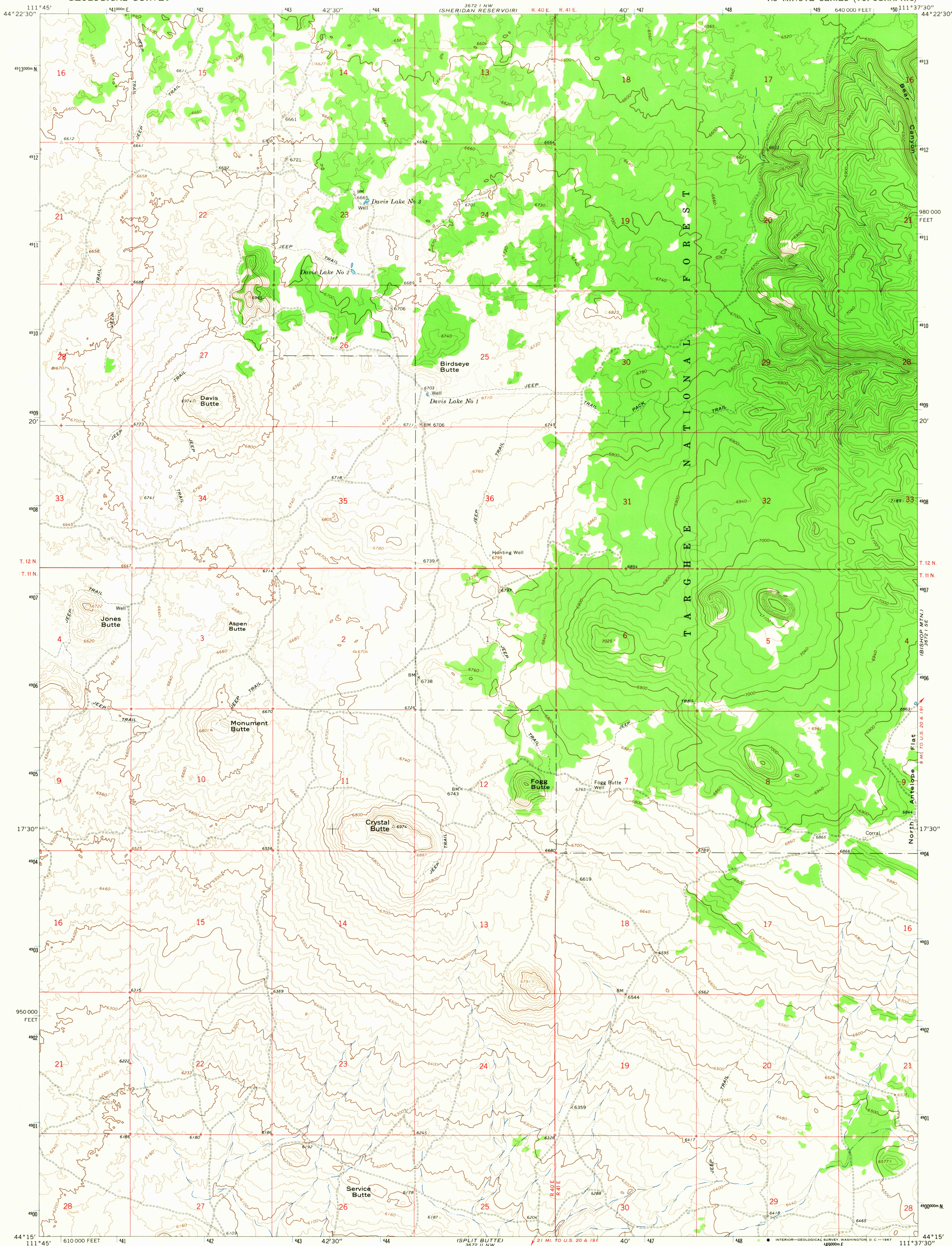


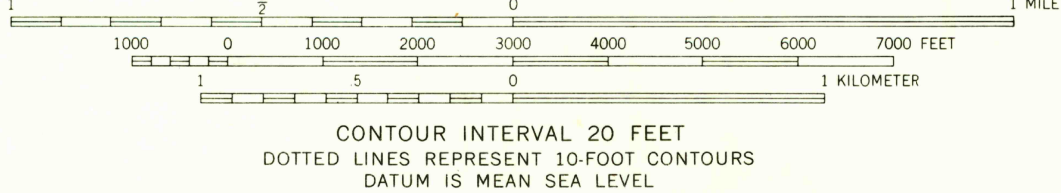
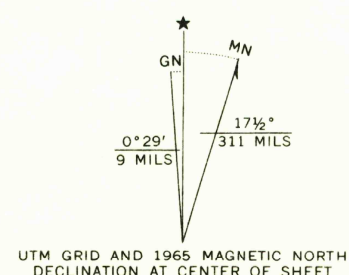
UNITED STATES  
DEPARTMENT OF THE INTERIOR  
GEOLOGICAL SURVEY

CRYSTAL BUTTE QUADRANGLE  
IDAHO-FREMONT CO.  
7.5 MINUTE SERIES (TOPOGRAPHIC)

3672 I NW  
(ICEHOUSE CREEK)



Mapped, edited, and published by the Geological Survey  
Control by USGS and USC&GS  
Topography by photogrammetric methods from aerial  
photographs taken 1963. Field checked 1965  
Polyconic projection. 1927 North American datum  
10,000-foot grid based on Idaho coordinate system,  
east zone  
1000-meter Universal Transverse Mercator grid ticks,  
zone 12, shown in blue  
Fine red dashed lines indicate selected force lines



THIS MAP COMPLIES WITH NATIONAL MAP ACCURACY STANDARDS  
FOR SALE BY U. S. GEOLOGICAL SURVEY, DENVER, COLORADO 80225, OR WASHINGTON, D. C. 20242  
A FOLDER DESCRIBING TOPOGRAPHIC MAPS AND SYMBOLS IS AVAILABLE ON REQUEST

USGS  
Historical File  
Topographic Division

ROAD CLASSIFICATION  
Unimproved dirt -----

USGS  
TOPOGRAPHIC DIVISION

CRYSTAL BUTTE, IDAHO  
N4415-W11137.5/7.5  
1965

AMS 3672 I SW-SERIES V893

2745  
JUN 9 1967