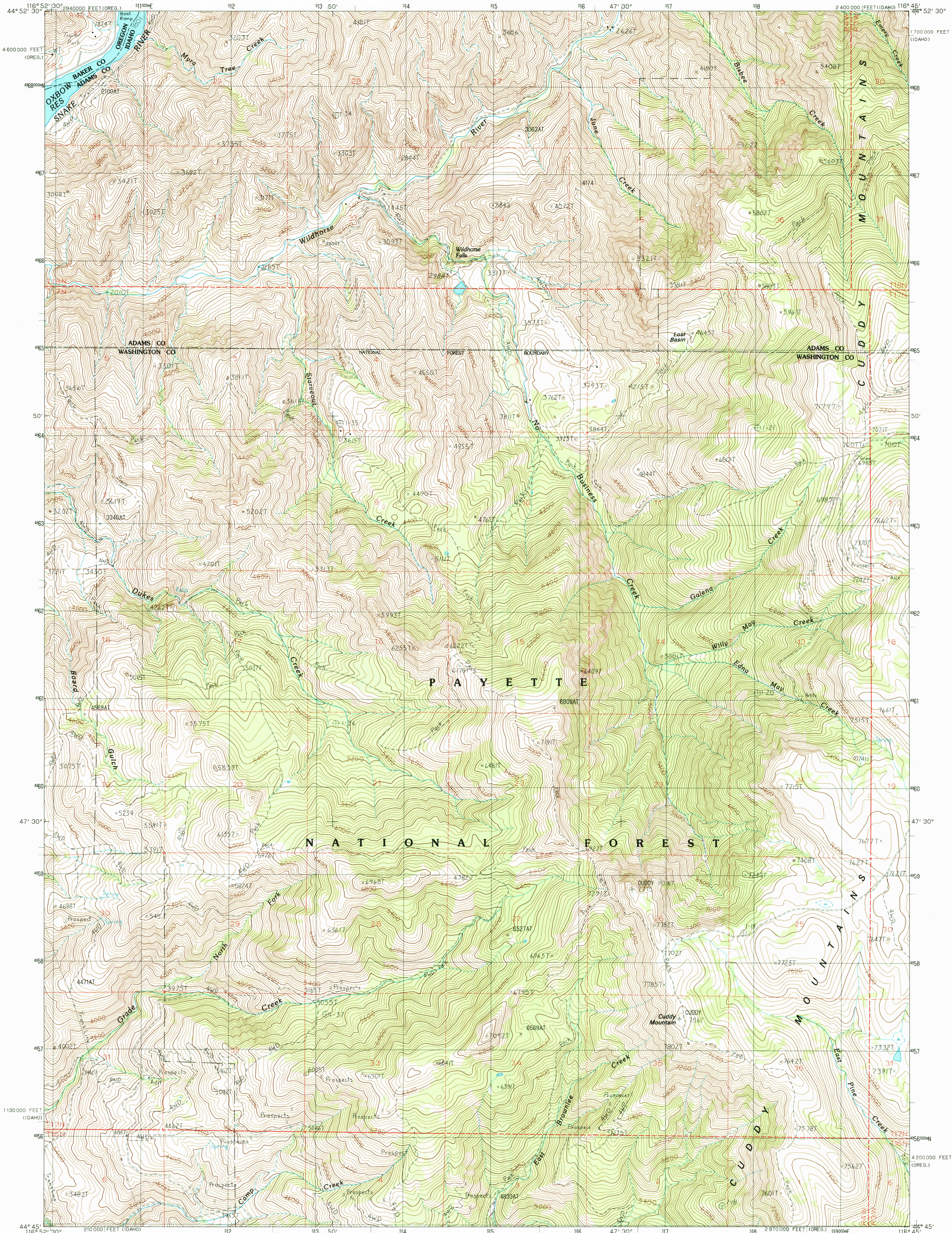


UNITED STATES
DEPARTMENT OF THE INTERIOR
GEOLOGICAL SURVEY

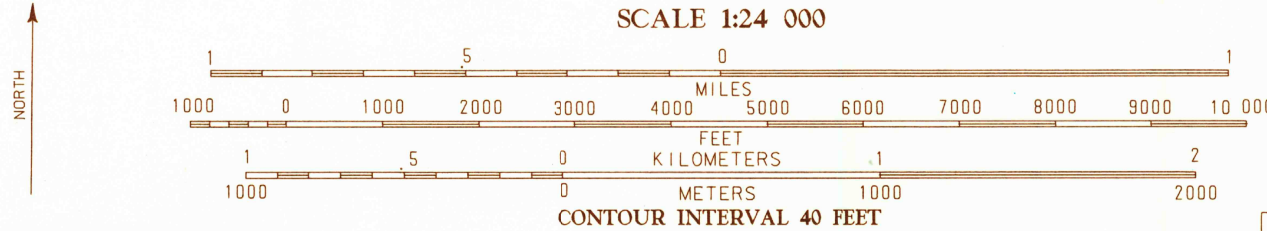
CUDDY MOUNTAIN QUADRANGLE
IDAHO-OREGON
7.5 MINUTE SERIES (TOPOGRAPHIC)



PRODUCED BY THE UNITED STATES GEOLOGICAL SURVEY
CONTROL BY U.S.G.S. NOS/NOAA
COMPILED FROM AERIAL PHOTOGRAPHS TAKEN 1981
FIELD CHECKED 1984 MAP EDITED 1987
PROJECTION TRANSVERSE MERCATOR
GRID: 1000-METER UNIVERSAL TRANSVERSE MERCATOR ZONE 12
1000-FOOT STATE GRID TICKS IDAHO, WEST ZONE
UTM GRID DECLINATION 0°08' EAST
1987 MAGNETIC NORTH DECLINATION 17°30' EAST
VERTICAL DATUM NATIONAL GEODETIC VERTICAL DATUM OF 1929
HORIZONTAL DATUM 1927 NORTH AMERICAN DATUM
To place on the predicted North American Datum of 1983,
move the projection lines as shown by dashed corner ticks
(16 meters north and 78 meters east)
There may be private inholdings within the boundaries of any
Federal and State Reservations shown on this map
All marginal data and lettering generated and positioned by
automated type placement procedures
No distinction made between houses, barns, and other buildings

PROVISIONAL MAP
Produced from original
manuscript drawings. Infor-
mation shown as of date of
photography. 1

THIS MAP COMPLIES WITH NATIONAL MAP ACCURACY STANDARDS
FOR SALE BY U.S. GEOLOGICAL SURVEY, DENVER, COLORADO 80225
OR RESTON, VIRGINIA 22092



QUADRANGLE LOCATION			ADJOINING 7.5' QUADRANGLE NAMES		
1	2	3	1	2	3
4	5	6	4	5	6
7	8	9	7	8	9

ROAD LEGEND
Improved Road
Unimproved Road
Trail
Interstate Route U.S. Route State Route

CUDDY MOUNTAIN, IDAHO-OREGON
PROVISIONAL EDITION 1987

44116-G7-TF-024

