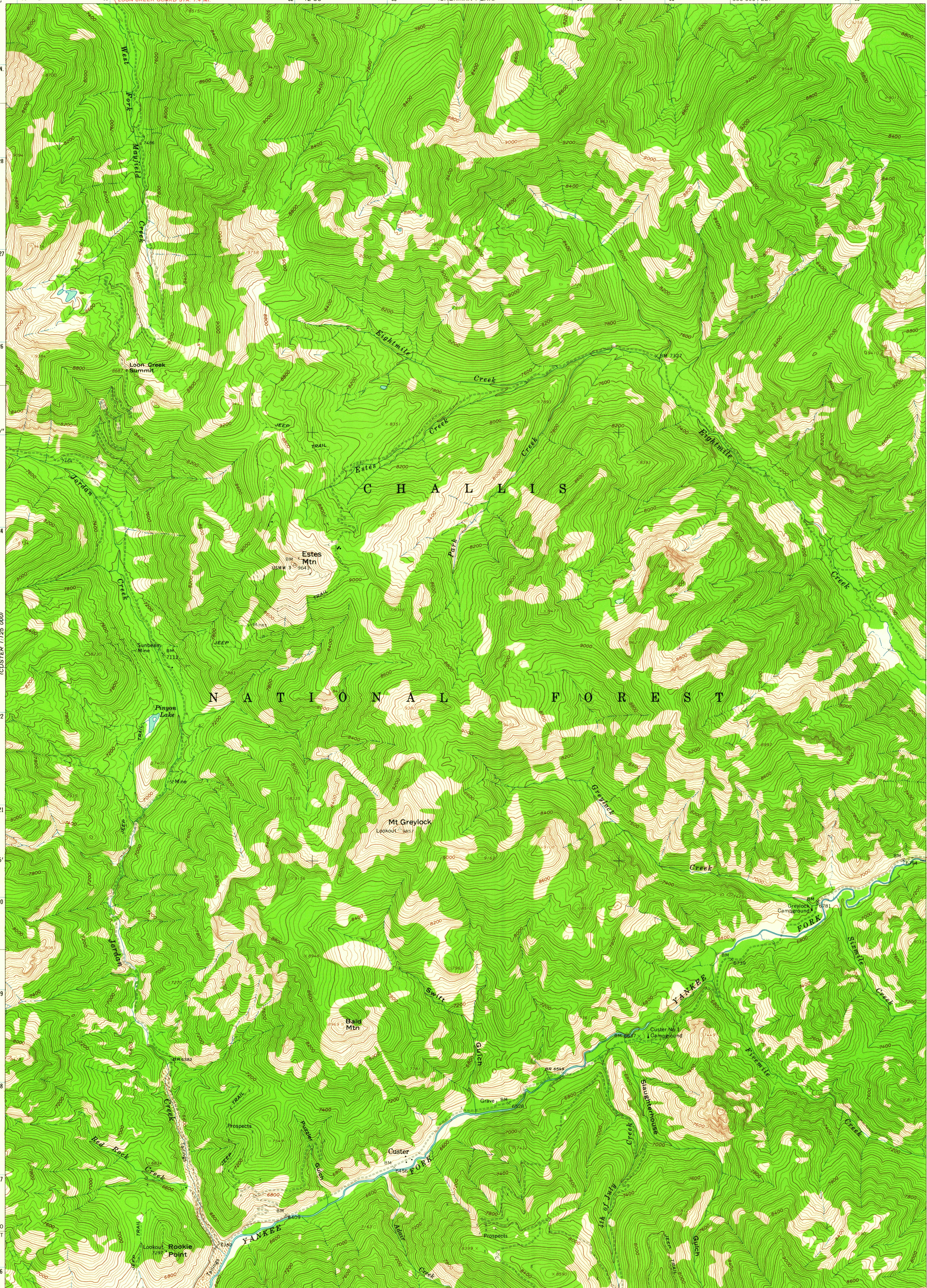
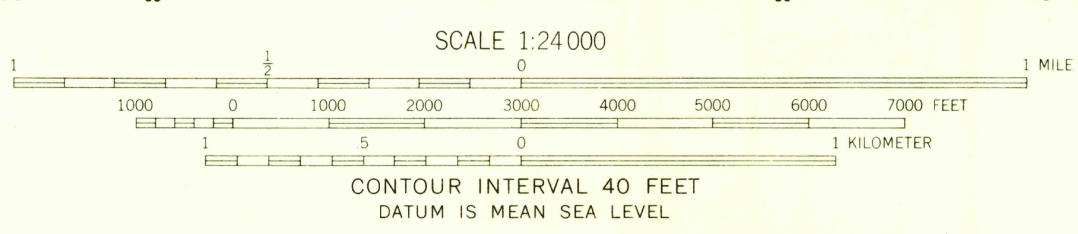
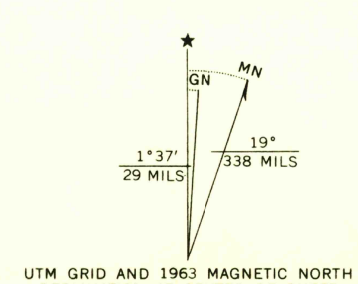


CHALLIS CREEK LAKES

114° 45' 45" W 44° 30' N 3073 II SW (SHERMAN PEAK) 330 000 FEET 114° 37' 30" W 44° 30' N



Mapped, edited, and published by the Geological Survey
Control by USGS and USC&GS
Topography by photogrammetric methods from aerial
photographs taken 1957. Field checked 1963
Polyconic projection. 1927 North American datum
10,000-foot grid based on Idaho coordinate system, central zone
1000-meter Universal Transverse Mercator grid ticks,
zone 11, shown in blue
Where omitted, land lines have not been established



ROAD CLASSIFICATION
Light-duty ————— Unimproved dirt - - - - -

THIS MAP COMPLIES WITH NATIONAL MAP ACCURACY STANDARDS
FOR SALE BY U. S. GEOLOGICAL SURVEY, DENVER 25, COLORADO OR WASHINGTON 25, D. C.
A FOLDER DESCRIBING TOPOGRAPHIC MAPS AND SYMBOLS IS AVAILABLE ON REQUEST

CUSTER, IDAHO
N4422.5-W11437.5/7.5

1963

AMS 3072 I NW—SERIES V893

AUG 21 1964

2715
U.S.G.S.
FILE COPY
TOPOGRAPHIC DIVISION