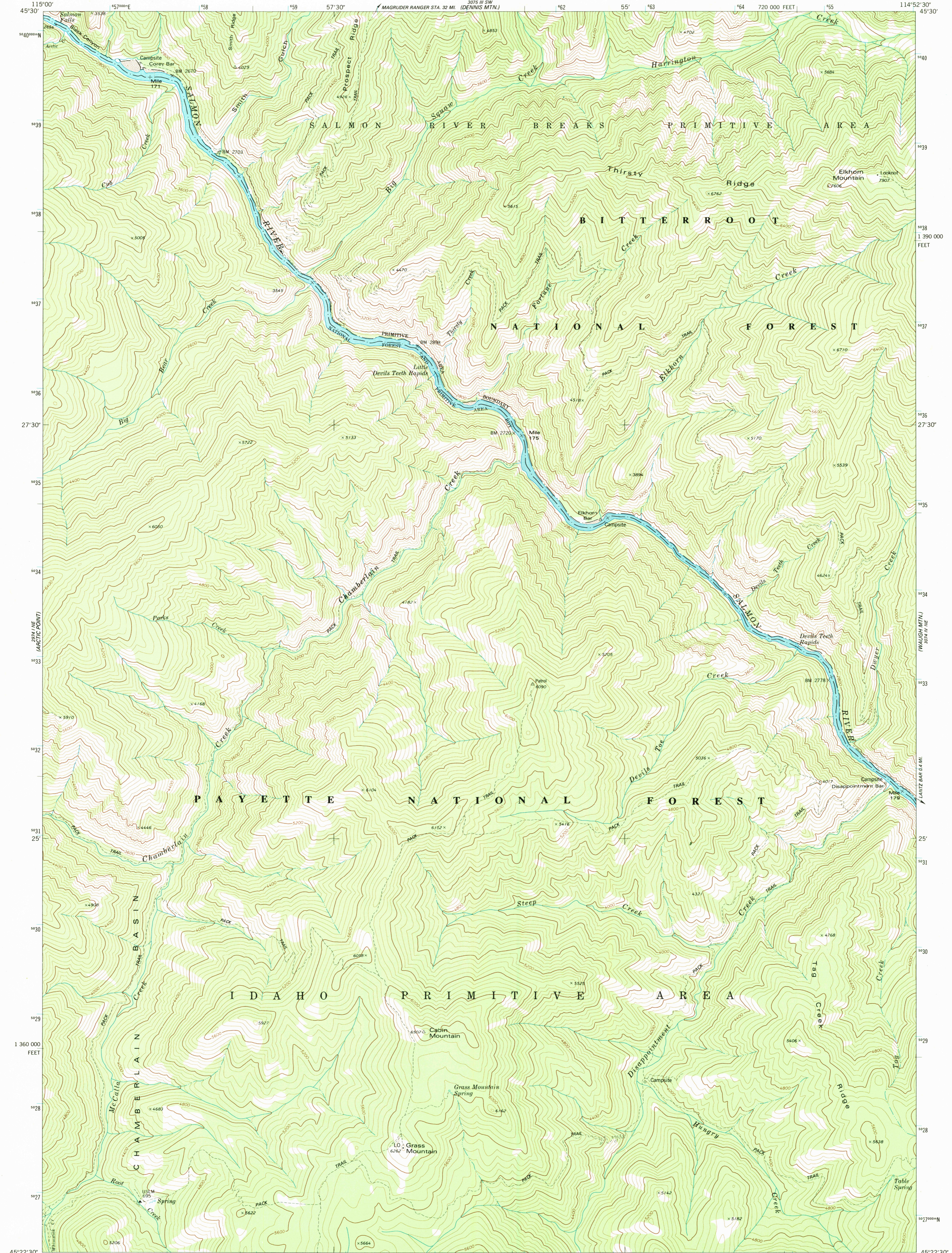
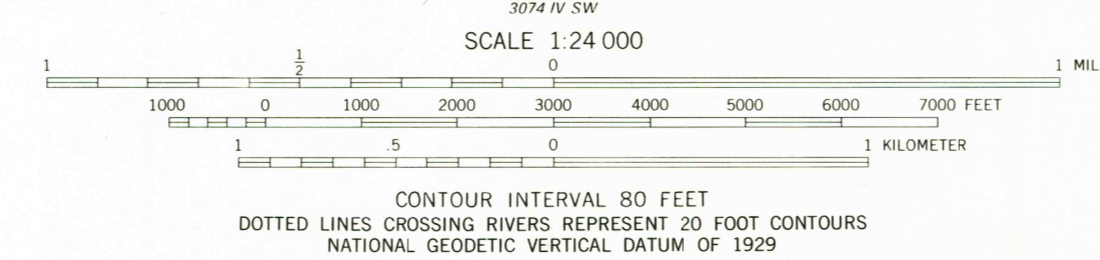
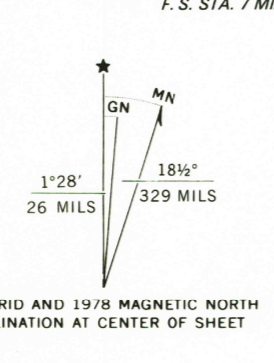


30° 24' NE
157° 15'

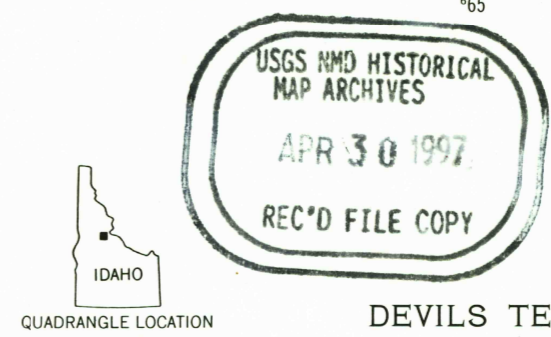
30° 24' SE
157° 15'



Mapped, edited, and published by the Geological Survey
Control by USGS and NOS/NOAA
Topography by photogrammetric methods from aerial
photographs taken 1972. Field checked 1974. Map edited 1978
Projection and 10,000-foot grid ticks: Idaho coordinate
system, west zone (transverse Mercator)
1000-meter Universal Transverse Mercator grid ticks,
zone 11, shown in blue. 1927 North American datum
Land lines have not been established in this area
There may be private inholdings within the boundaries of
the National or State reservations shown on this map



CONTOUR INTERVAL 80 FEET
DOTTED LINES CROSSING RIVERS REPRESENT 20 FOOT CONTOURS
NATIONAL GEODETIC VERTICAL DATUM OF 1929



ROAD CLASSIFICATION
Trails

DEVILS TEETH RAPIDS, IDAHO
N4522.5—W11452.5/7.5

THIS MAP COMPLIES WITH MAP ACCURACY STANDARDS
FOR SALE BY U.S. GEOLOGICAL SURVEY, P.O. BOX 25286, DENVER, COLORADO 80225
A FOLDER DESCRIBING TOPOGRAPHIC MAPS AND SYMBOLS IS AVAILABLE ON REQUEST

1978
AMS 3074 IV NW—SERIES V893

