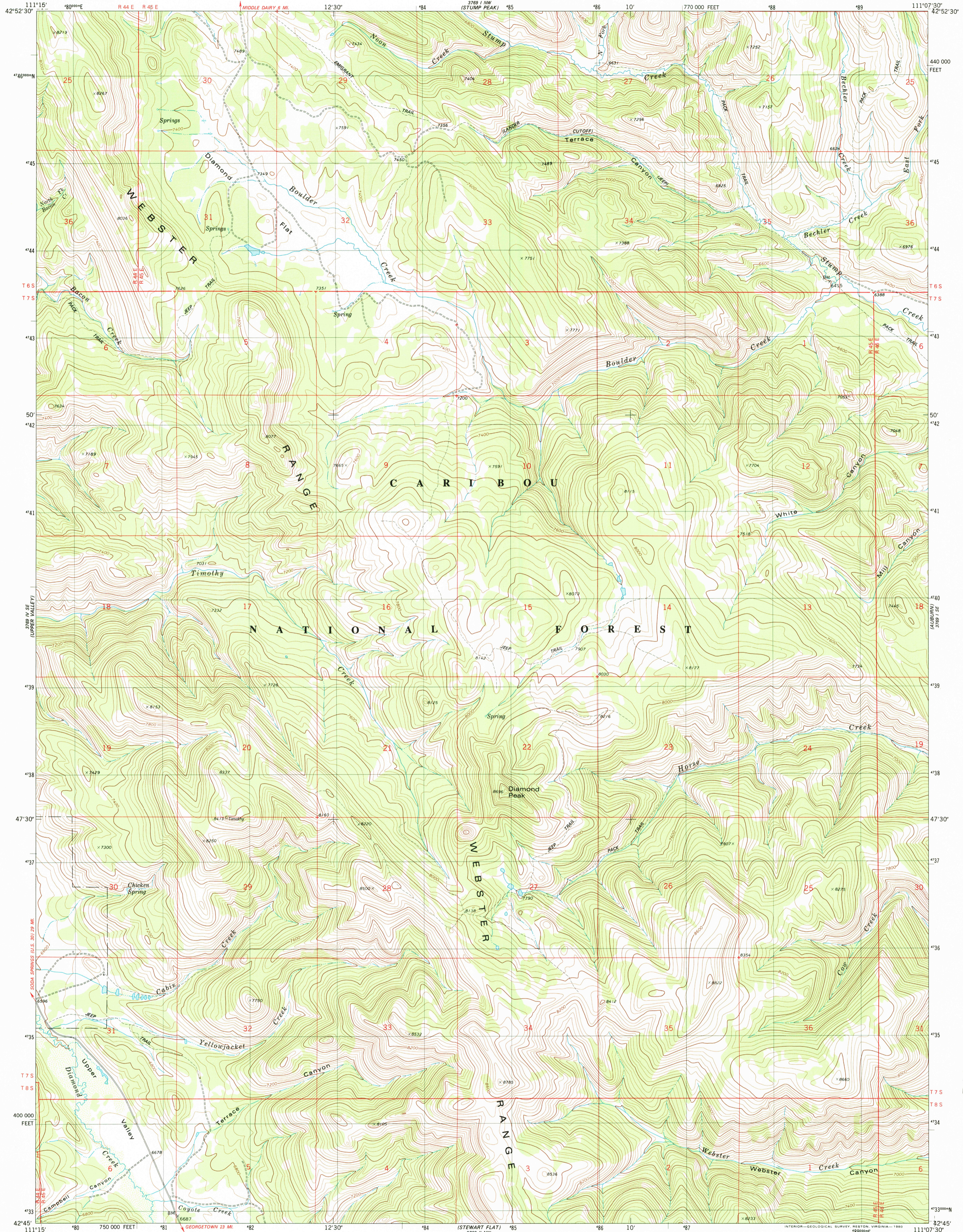




U.S. DEPARTMENT OF THE INTERIOR
U.S. GEOLOGICAL SURVEY

DIAMOND FLAT QUADRANGLE
IDAHO—CARIBOU CO.
7.5 MINUTE SERIES (TOPOGRAPHIC)
SW4 FREEDOM 15' QUADRANGLE



Mapped, edited, and published by the Geological Survey

Control by USGS and NOS/NOAA

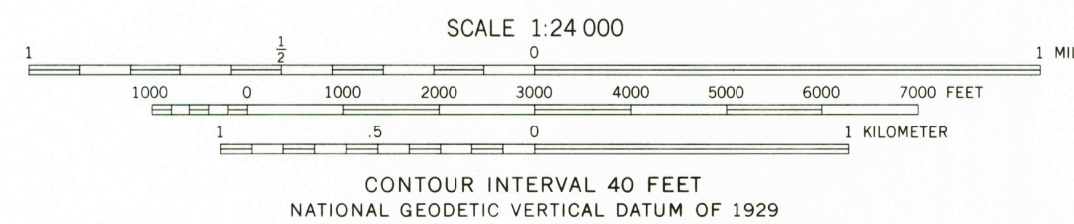
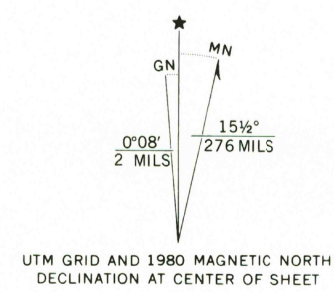
Topography by photogrammetric methods from aerial photographs taken 1973. Field checked 1974. Map edited 1980

Projection and 10,000-foot grid ticks: Idaho coordinate system, east zone (transverse Mercator) 1000-meter Universal Transverse Mercator grid, zone 12 1927 North American datum

To place on the predicted North American Datum 1983 move the projection lines 11 meters north and 63 meters east as shown by dashed corner ticks

Fine red dashed lines indicate selected fence lines

There may be private holdings within the boundaries of the National or State reservations shown on this map



ROAD CLASSIFICATION

Primary highway, hard surface	Light-duty road, hard or improved surface
Secondary highway, hard surface	Unimproved road
Interstate Route	U.S. Route
	State Route

THIS MAP COMPLIES WITH NATIONAL MAP ACCURACY STANDARDS
FOR SALE BY U.S. GEOLOGICAL SURVEY, P.O. BOX 25286, DENVER, COLORADO 80225
A FOLDER DESCRIBING TOPOGRAPHIC MAPS AND SYMBOLS IS AVAILABLE ON REQUEST

DIAMOND FLAT, IDAHO
SW4 FREEDOM 15' QUADRANGLE
N4245-W11107.5/7.5

1980

DMA 3769 I SW-SERIES V893

RECEIVED

AUG 31 2001

HISTORICAL MAP ARCHIVES

