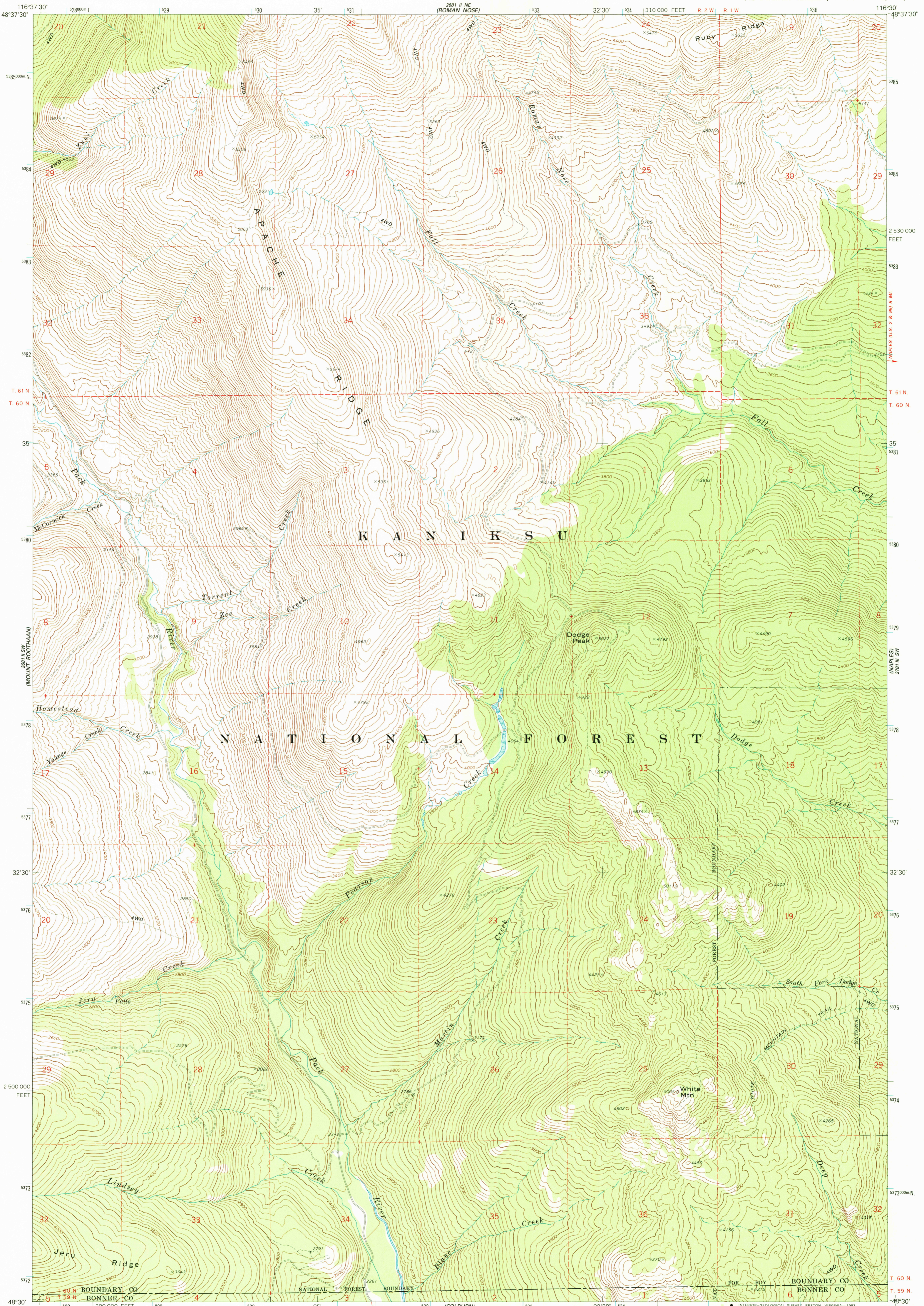


2881 I NW
(MOUNT ROOTHAAN)

2881 I NW
(ROMAN NOSE)



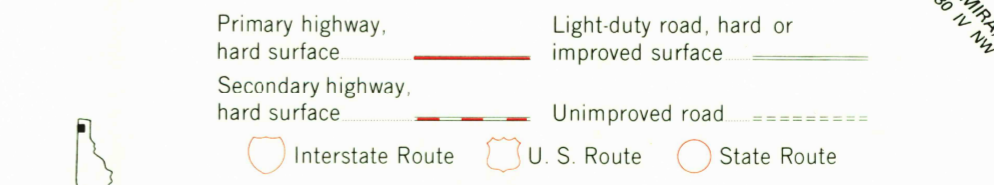
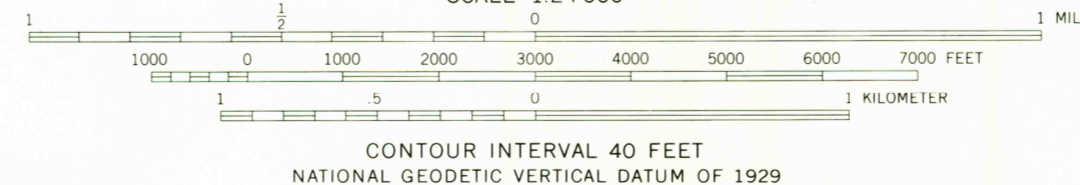
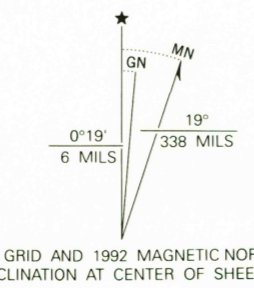
Produced by the United States Geological Survey

Control by USGS and NOS/NOAA
Compiled from aerial photographs taken 1967
Field checked 1967

North American Datum of 1927 (NAD 27). Projection and
10,000-foot grid ticks: Idaho Coordinate System, west zone
(Transverse Mercator). 1000-meter Universal Transverse
Mercator grid ticks, zone 11, shown in blue

The difference between NAD 27 and North American Datum of
1983 (NAD 83) for 7.5 minute intersections is given in USGS
Bulletin 1875. The NAD 83 is shown by dashed corner ticks

There may be private inholdings within the boundaries of the
National or State reservations shown on this map
Photorevised from 1989 source, no major culture
or drainage changes observed. Boundaries revised
and names verified 1992



ROAD CLASSIFICATION

Primary highway, hard surface	Light-duty road, hard or improved surface
Secondary highway, hard surface	Unimproved road
Interstate Route	U. S. Route
	State Route

THIS MAP COMPLIES WITH NATIONAL MAP ACCURACY STANDARDS
FOR SALE BY U.S. GEOLOGICAL SURVEY
DENVER, COLORADO 80225, OR RESTON, VIRGINIA 22092
A FOLDER DESCRIBING TOPOGRAPHIC MAPS AND SYMBOLS IS AVAILABLE ON REQUEST

DODGE PEAK, IDAHO
48116-E5-TF-024

1967
MINOR REVISION 1992
DMA 2681 II SE-SERIES V893

