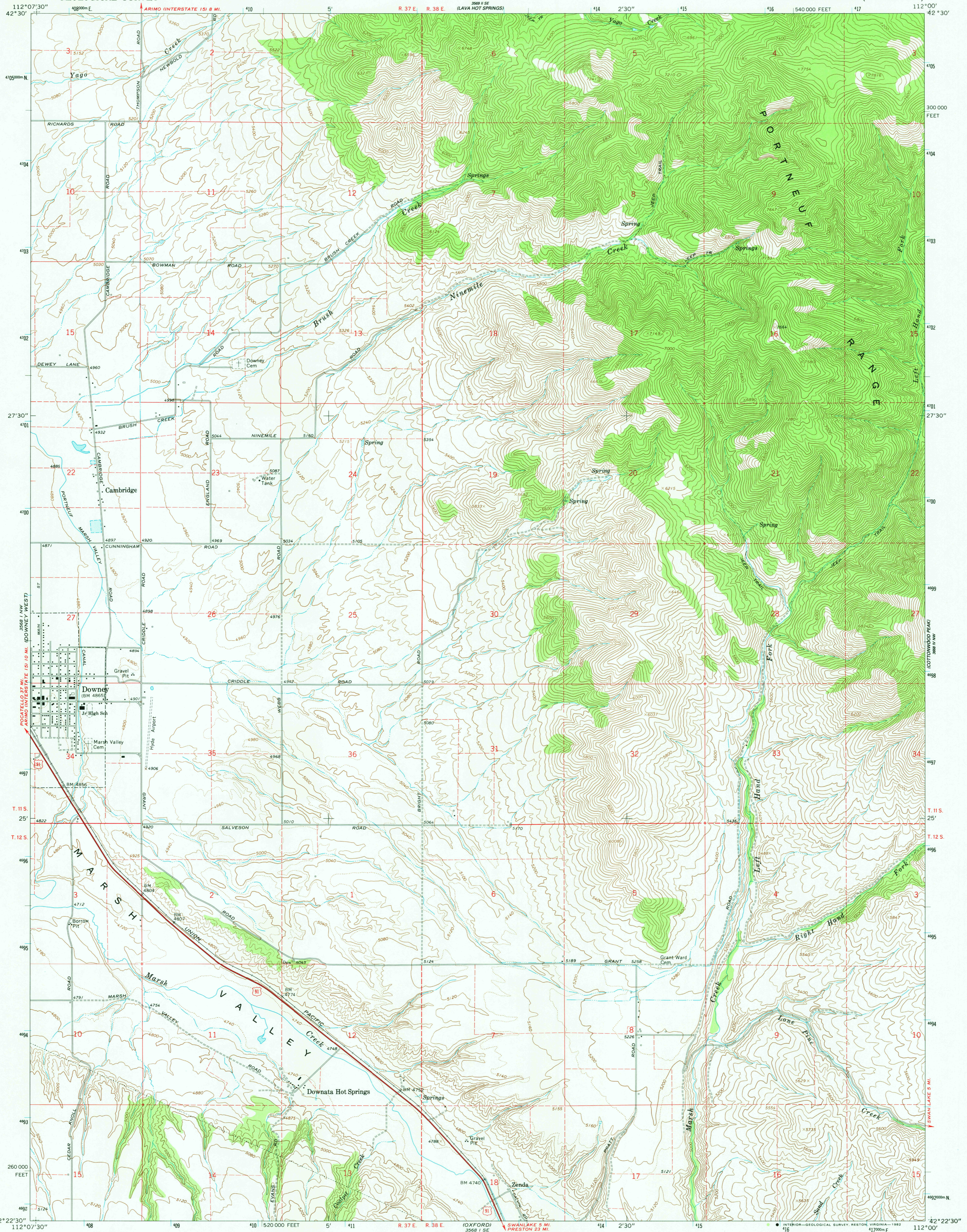
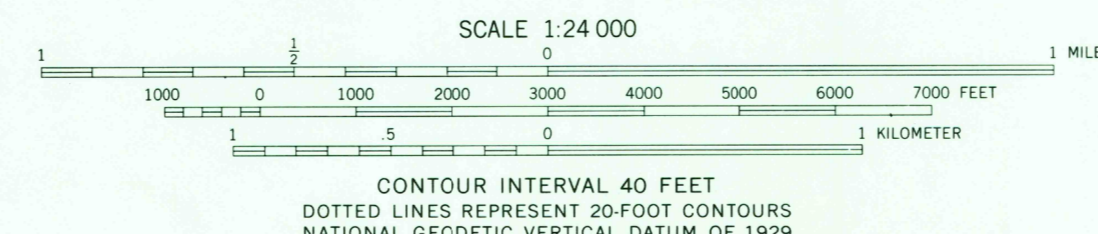
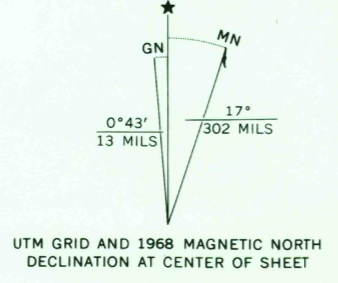


3568 I NE  
BANCROFT 1:62,500



Mapped, edited, and published by the Geological Survey  
Control by USGS and USC&GS  
Topography by photogrammetric methods from aerial photographs taken 1966. Field checked 1968  
Polyconic projection. 1927 North American datum, 10,000-foot grid based on Idaho coordinate system, east zone  
1000-meter Universal Transverse Mercator grid ticks, zone 12, shown in blue  
To place on the predicted North American Datum 1983, move the projection lines 12 meters north and 66 meters east as shown by dashed corner ticks  
Fine red dashed lines indicate selected fence lines



CONTOUR INTERVAL 40 FEET  
DOTTED LINES REPRESENT 20-FOOT CONTOURS  
NATIONAL GEODETIC VERTICAL DATUM OF 1929

THIS MAP COMPLIES WITH NATIONAL MAP ACCURACY STANDARDS  
FOR SALE BY U. S. GEOLOGICAL SURVEY, DENVER, COLORADO 80225, OR RESTON, VIRGINIA 22092  
A FOLDER DESCRIBING TOPOGRAPHIC MAPS AND SYMBOLS IS AVAILABLE ON REQUEST

ROAD CLASSIFICATION

Primary highway, all weather, hard surface	Light-duty road, all weather, improved surface
Unimproved road, fair or dry weather	U. S. Route



DOWNEY EAST, IDAHO  
N4222.5—W11200/7.5  
1968  
PHOTOINSPECTED 1980  
DMA 3568 I NE—SERIES V893

Map photoinspected 1980  
No major culture or drainage changes observed

DEC 24 1982

1000