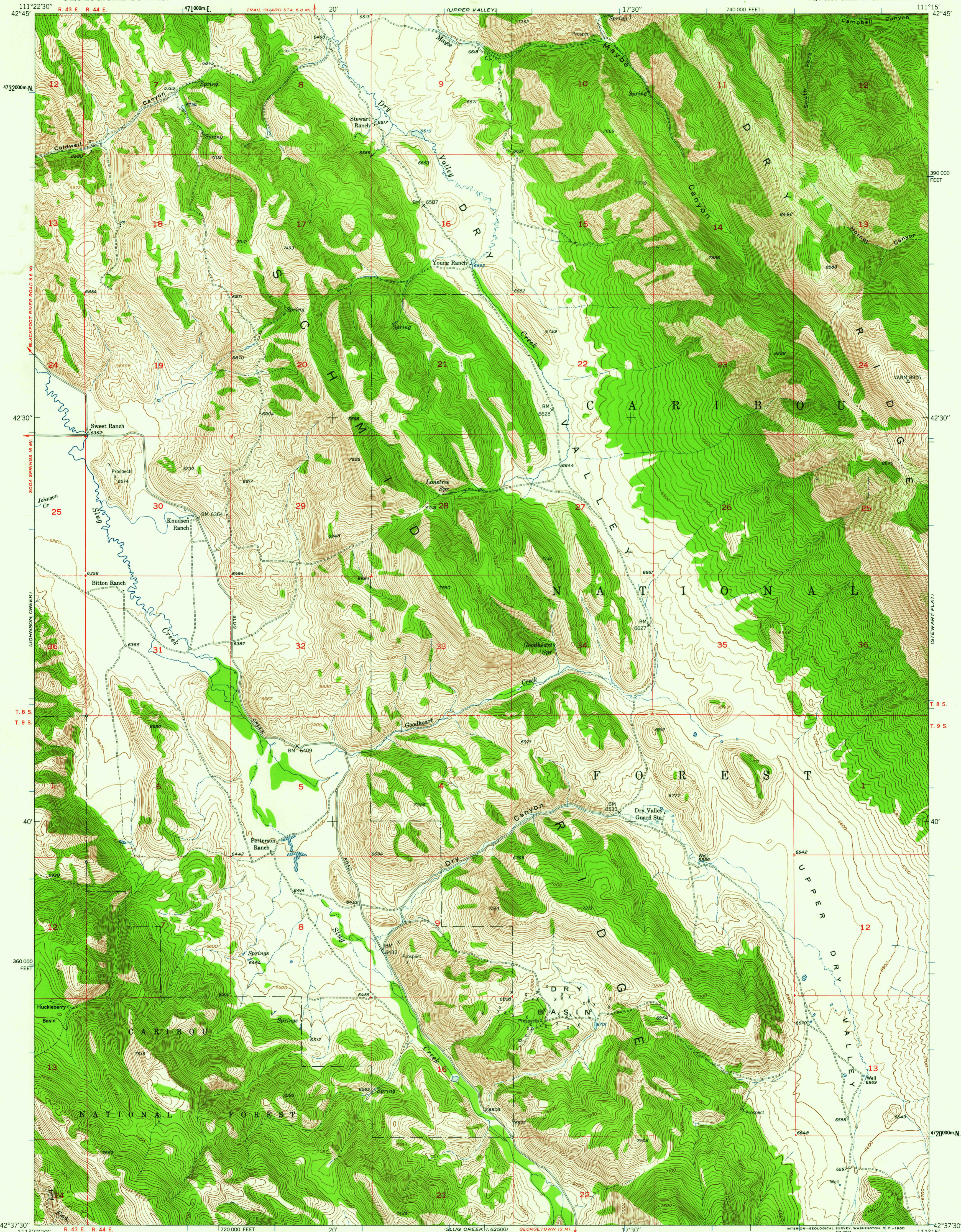
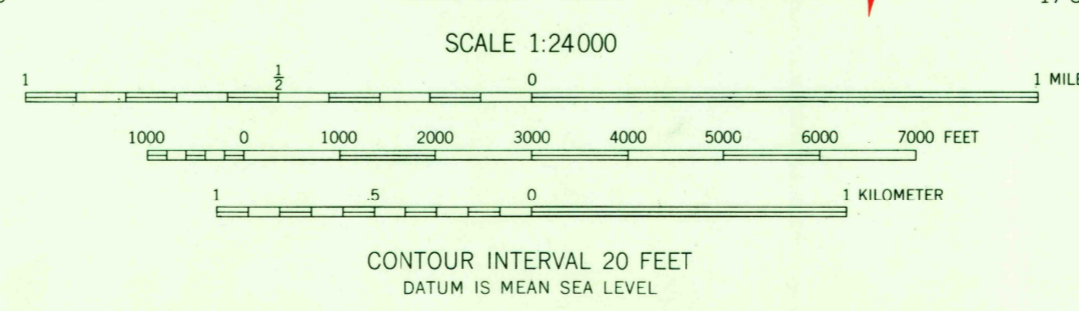
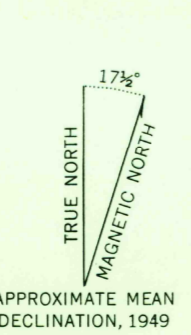


UNITED STATES
DEPARTMENT OF THE INTERIOR
GEOLOGICAL SURVEY

DRY VALLEY QUADRANGLE
IDAHO-CARIBOU CO.
7.5 MINUTE SERIES (TOPOGRAPHIC)
NE/4 SLUG CREEK 15' QUADRANGLE



Mapped, edited, and published by the Geological Survey
Control by USGS and USC&GS
Topography from aerial photographs by multiplex methods
Aerial photographs taken 1947. Field check 1949
Polyconic projection. 1927 North American datum
10,000-foot grid based on Idaho coordinate system,
east zone
Unchecked elevations are shown in brown
Dashed land lines indicate approximate location
1000-meter Universal Transverse Mercator grid ticks,
zone 12, shown in blue



ROAD CLASSIFICATION
Light duty ——— Unimproved dirt - - - - -

THIS MAP COMPLIES WITH NATIONAL MAP ACCURACY STANDARDS
FOR SALE BY U. S. GEOLOGICAL SURVEY, DENVER 25, COLORADO OR WASHINGTON 25, D. C.
A FOLDER DESCRIBING TOPOGRAPHIC MAPS AND SYMBOLS IS AVAILABLE ON REQUEST

U.S.G.S.
FILE COPY
TOPOGRAPHIC DIVISION

DRY VALLEY, IDAHO
NE/4 SLUG CREEK 15' QUADRANGLE
N4237.5-W11115/7.5
1949

FEB 11 1950

2060