

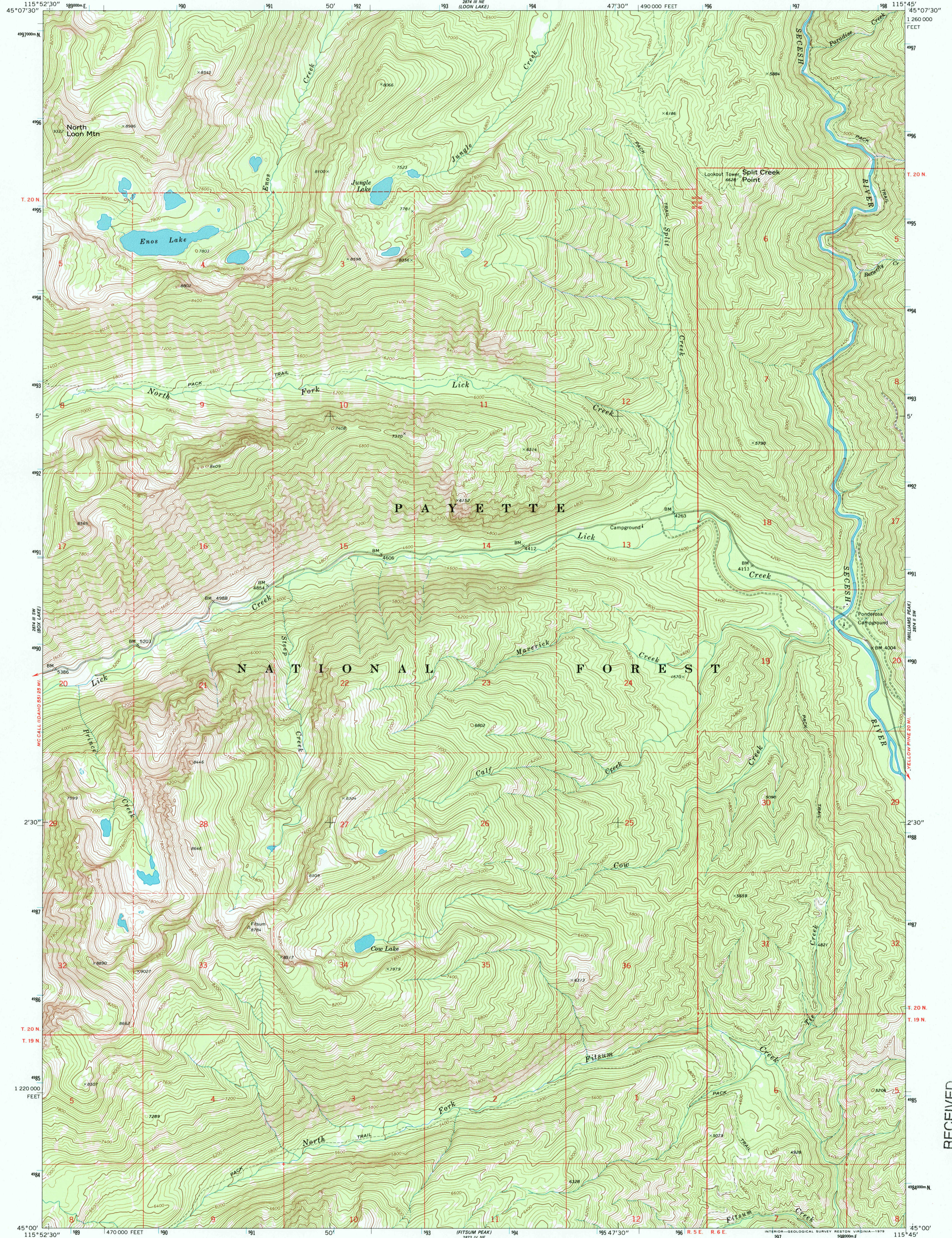
2874 III SE (VECTOR PEAK)



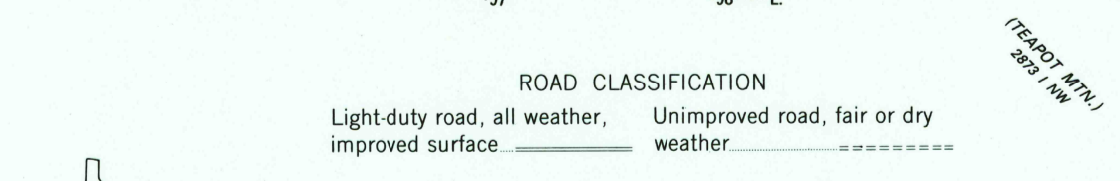
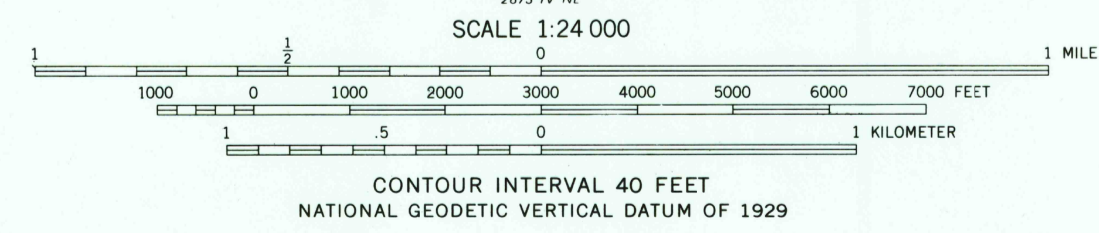
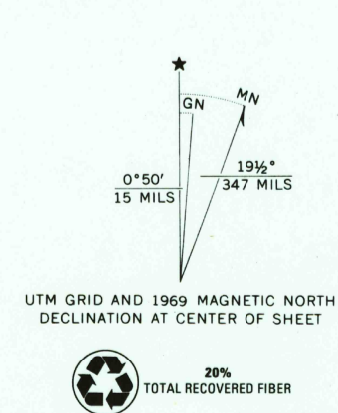
U.S. DEPARTMENT OF THE INTERIOR
U.S. GEOLOGICAL SURVEY

ENOS LAKE QUADRANGLE
IDAHO—VALLEY CO.
7.5 MINUTE SERIES (TOPOGRAPHIC)

2874 III SE (POLY PEAKS)



Mapped by the U. S. Forest Service
Edited and published by the Geological Survey
Control by USGS, USC&GS and USFS
Topography by photogrammetric methods from aerial
photographs taken 1964. Field checked by USGS 1969
Polyconic projection. 1927 North American datum
10,000-foot grid based on Idaho coordinate system,
west zone
1000-meter Universal Transverse Mercator grid ticks,
zone 11, shown in blue
To place on the predicted North American Datum 1983,
move the projection lines 15 meters north and
75 meters east as shown by dashed corner ticks
Where omitted, land lines have not been established
There may be private inholdings within the boundaries of
the National or State reservations shown on this map



ENOS LAKE, IDAHO
N4500—W11545/7.5
1969
DMA 2874 III SE—SERIES V893

RECEIVED
JAN 31 2000
USGS-WIU
HISTORICAL MAP ARCHIVES

