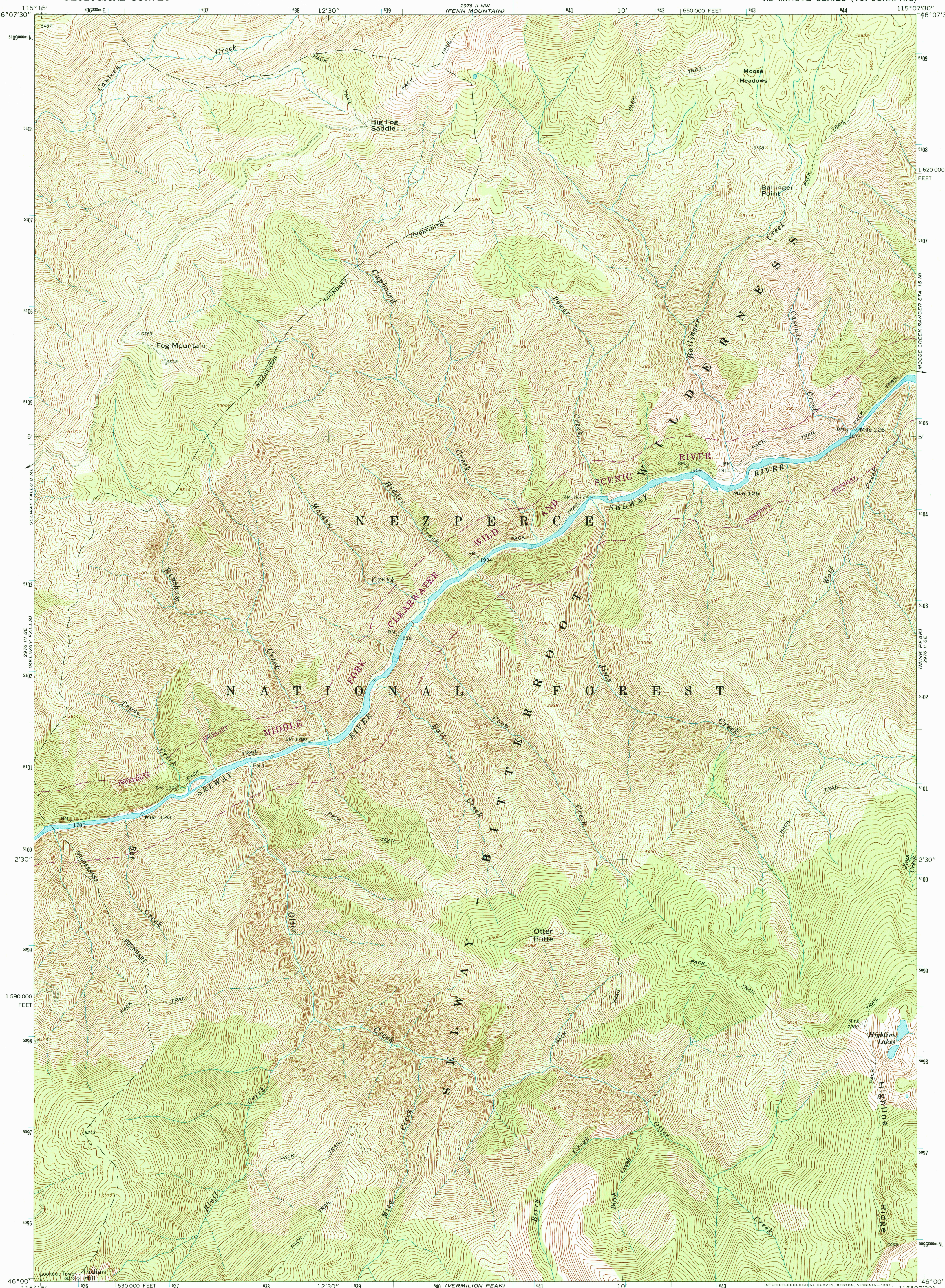


115°15' 46°07'30" 115°07'30" 46°07'30" 650000 FEET 443 444



Mapped, edited, and published by the Geological Survey

Control by USGS and NOS/NOAA

Topography by photogrammetric methods from aerial photographs taken 1964. Field checked 1966

Polyconic projection. 1927 North American Datum

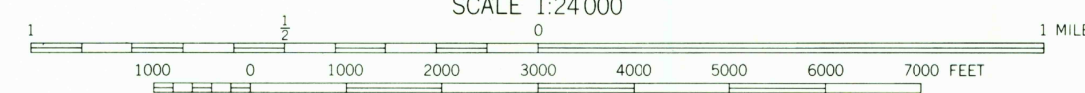
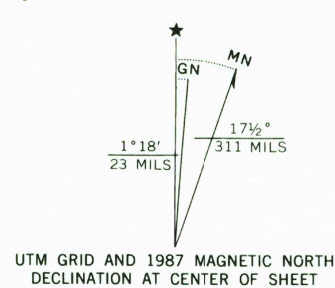
10,000-foot grid based on Idaho coordinate system, west zone

1000-meter Universal Transverse Mercator grid ticks, zone 11, shown in blue

Land lines have not been established in this area

There may be private inholdings within the boundaries of the National or State reservations shown on this map

To place on the predicted North American Datum 1983 move the projection lines 14 meters north and 74 meters east as shown by dashed corner ticks



SCALE 1:24,000
CONTOUR INTERVAL 40 FEET
DOTTED LINES CROSSING RIVERS REPRESENT 20-FOOT CONTOURS
NATIONAL GEODETIC VERTICAL DATUM OF 1929

THIS MAP COMPLIES WITH NATIONAL MAP ACCURACY STANDARDS
FOR SALE BY U.S. GEOLOGICAL SURVEY, P.O. BOX 25286, DENVER, COLORADO 80225
A FOLDER DESCRIBING TOPOGRAPHIC MAPS AND SYMBOLS IS AVAILABLE ON REQUEST



QUADRANGLE LOCATION

ROAD CLASSIFICATION
Unimproved dirt - - - - -

FOG MOUNTAIN, IDAHO
46115-A2-TF-024

1966
PHOTOREVISED 1987
DMA 2976 II SW—SERIES V893

Revisions shown in purple compiled from aerial photographs taken 1982 and other source data. Partial field check by U. S. Forest Service. Map edited 1987

USGS AND HISTORICAL
MAP ARCHIVES
MAY 31 1996
REC'D FILE COPY

