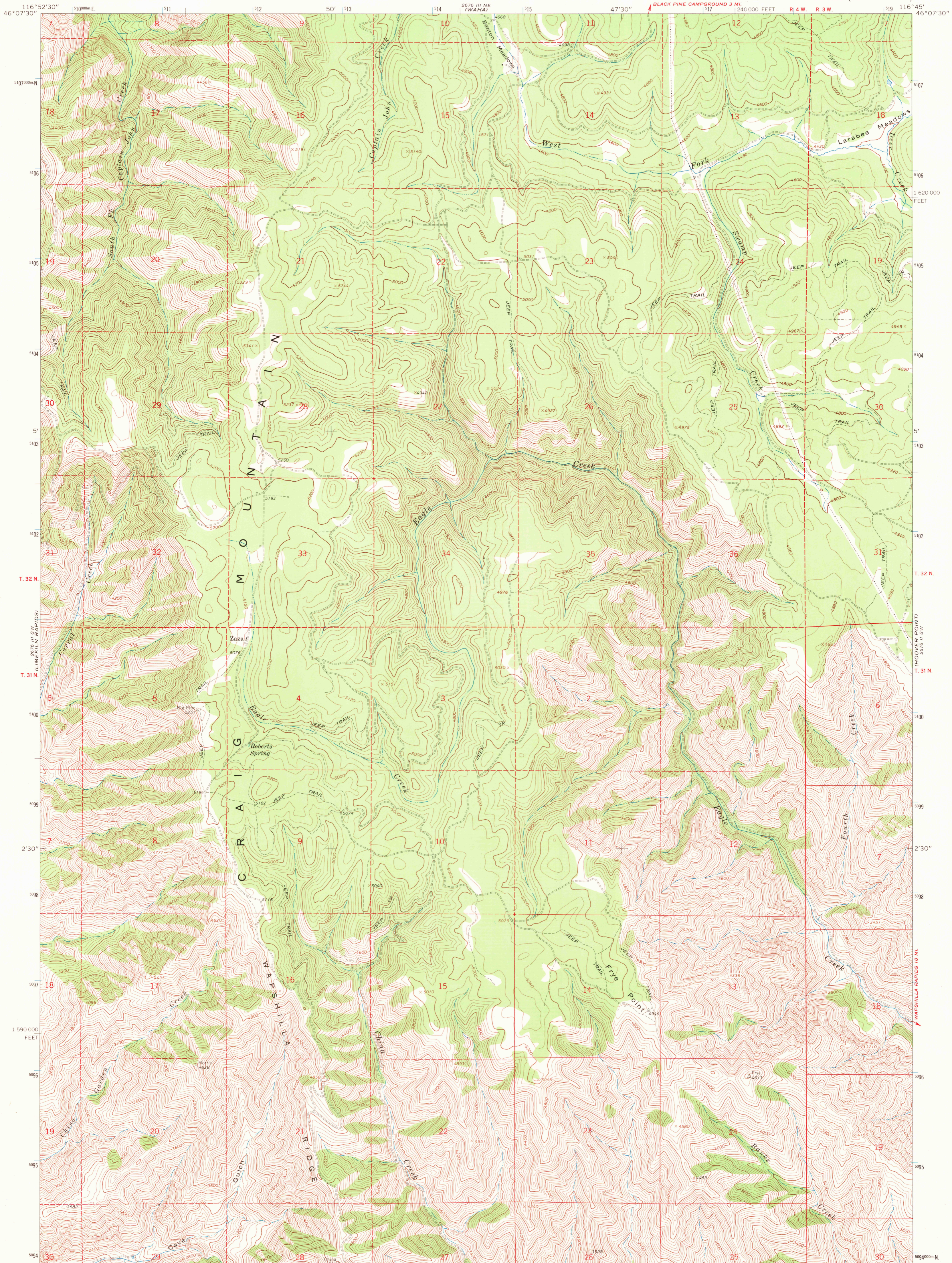
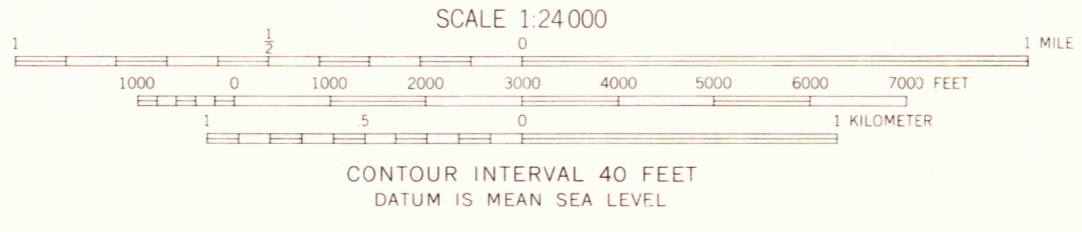
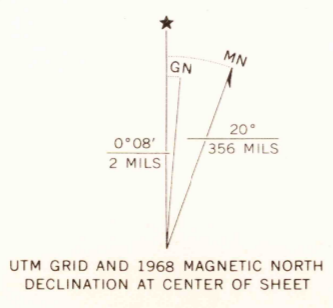


UNITED STATES
DEPARTMENT OF THE INTERIOR
GEOLOGICAL SURVEY

FRYE POINT QUADRANGLE
IDAHO—NEZ PERCE CO.
7.5 MINUTE SERIES (TOPOGRAPHIC)



Maped, edited, and published by the Geological Survey
Control by USGS and USC&GS
Topography by photogrammetric methods from aerial
photographs taken 1966. Field checked 1968
Polyconic projection. 1927 North American datum
10,000-foot grid based on Idaho coordinate system,
west zone
1000-meter Universal Transverse Mercator grid ticks,
zone 11, shown in blue



USGS
Historical File
Topographic Division



ROAD CLASSIFICATION
Unimproved dirt -----

U.S.G.S.
FILE COPY
TOPOGRAPHIC DIVISION
HISTORICAL

THIS MAP COMPLIES WITH NATIONAL MAP ACCURACY STANDARDS
FOR SALE BY U.S. GEOLOGICAL SURVEY, DENVER, COLORADO 80225, OR WASHINGTON, D.C. 20242
A FOLDER DESCRIBING TOPOGRAPHIC MAPS AND SYMBOLS IS AVAILABLE ON REQUEST

FRYE POINT, IDAHO
N4600—W11645/7.5
1968
AMS 2676 III SE—SERIES V893

2340
AUG 9 1971