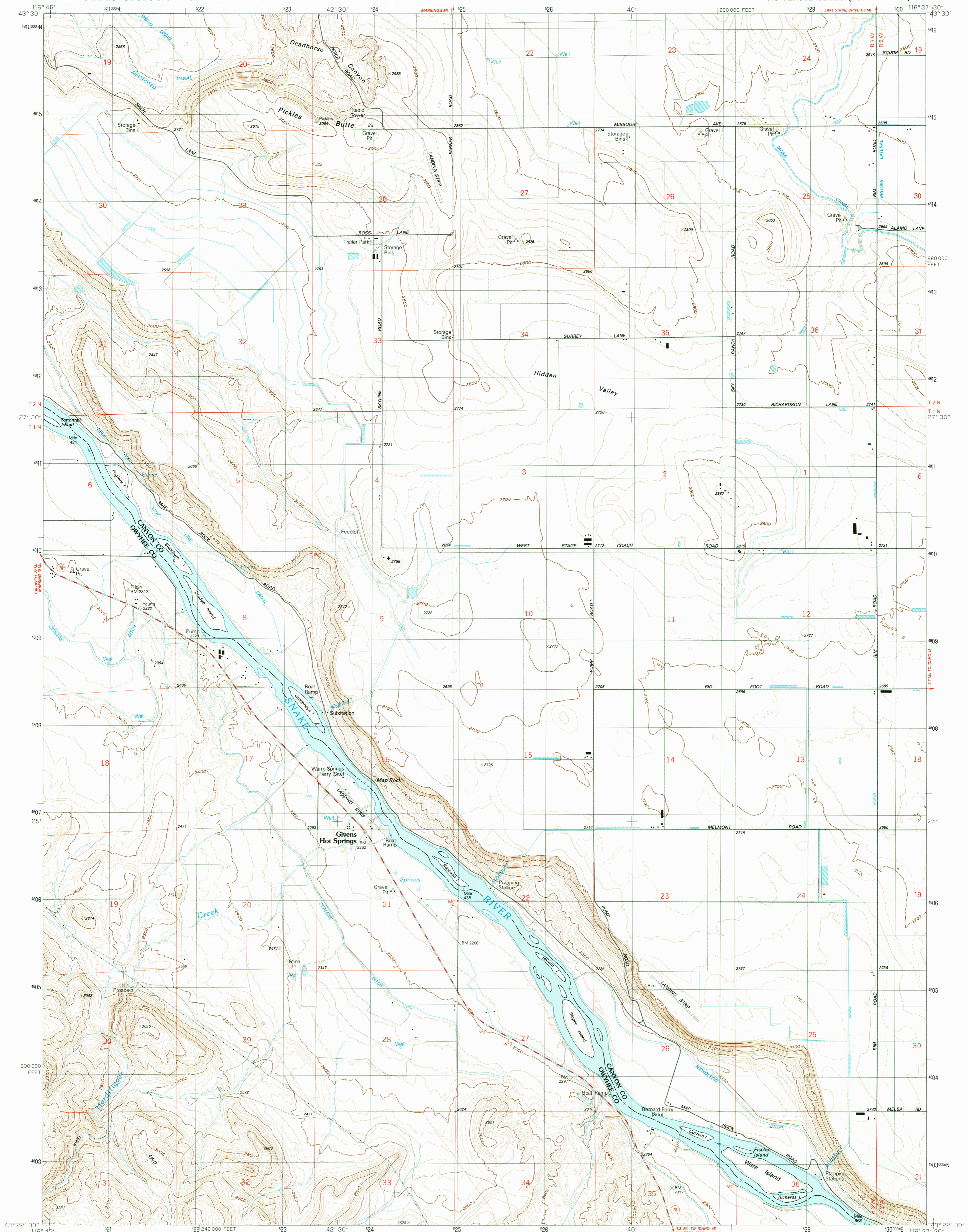
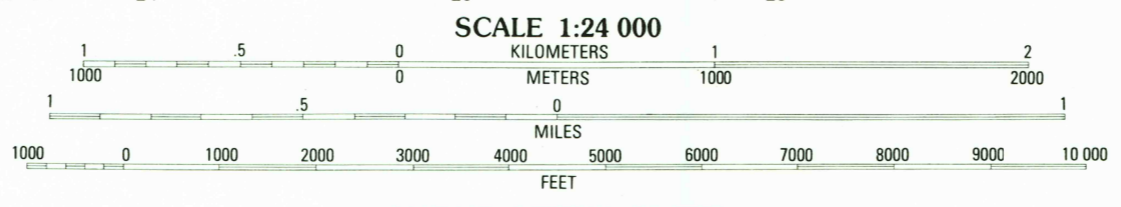
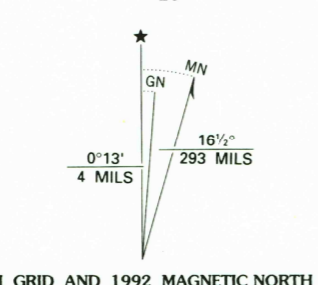


DEPARTMENT OF THE INTERIOR
UNITED STATES GEOLOGICAL SURVEY

GIVENS HOT SPRINGS QUADRANGLE
IDAHO
7.5 MINUTE SERIES (TOPOGRAPHIC)



Produced by the United States Geological Survey
Control by USGS and NOS/NOAA
Compiled from aerial photographs taken 1955. Revised from aerial photographs taken 1987. Field checked 1990. Map edited 1992
North American Datum of 1927 (NAD 27). Projection and 10 000-foot grid ticks: Idaho Coordinate System, west zone (Transverse Mercator). 1000-meter Universal Transverse Mercator grid, zone 11
The difference between NAD 27 and North American Datum of 1983 (NAD 83) for 7.5 minute intersections is given in USGS Bulletin 1875. The NAD 83 is shown by dashed corner ticks
There may be private inholdings within the boundaries of the National or State reservations shown on this map
Landlines in part are based on cultural development and are not reflected in original land survey
Bounded islands in the Snake River are part of the Deer Flat National Wildlife Refuge



CONTOUR INTERVAL 20 FEET
SUPPLEMENTARY CONTOUR INTERVAL 10 FEET
CONTOUR INTERVAL ON RIVER 5 FEET
NATIONAL GEODETIC VERTICAL DATUM OF 1929
TO CONVERT FEET TO METERS MULTIPLY BY 0.3048
TO CONVERT METERS TO FEET MULTIPLY BY 3.2808

THIS MAP COMPLIES WITH NATIONAL MAP ACCURACY STANDARDS FOR SALE BY U.S. GEOLOGICAL SURVEY
DENVER, COLORADO 80225 OR RESTON, VIRGINIA 22092
A FOLDER DESCRIBING TOPOGRAPHIC MAPS AND SYMBOLS IS AVAILABLE ON REQUEST

ROAD CLASSIFICATION

Primary highway, hard surface	Light-duty road, hard or improved surface
Secondary highway, hard surface	Unimproved road
Interstate Route	U. S. Route
	State Route

1	2	3	1	Marsing # M.
4	5	6	2	Lake Lowell
6	7	8	3	Nampa
			4	Opalene Gulch
			5	Melba
			6	Soldier Cap
			7	Wilson Peak
			8	Walters Butte

ADJOINING 7.5 QUADRANGLE NAMES

GIVENS HOT SPRINGS, ID
43116-D6-TF-024
1992
DMA 2670 1 N-SERIES V893