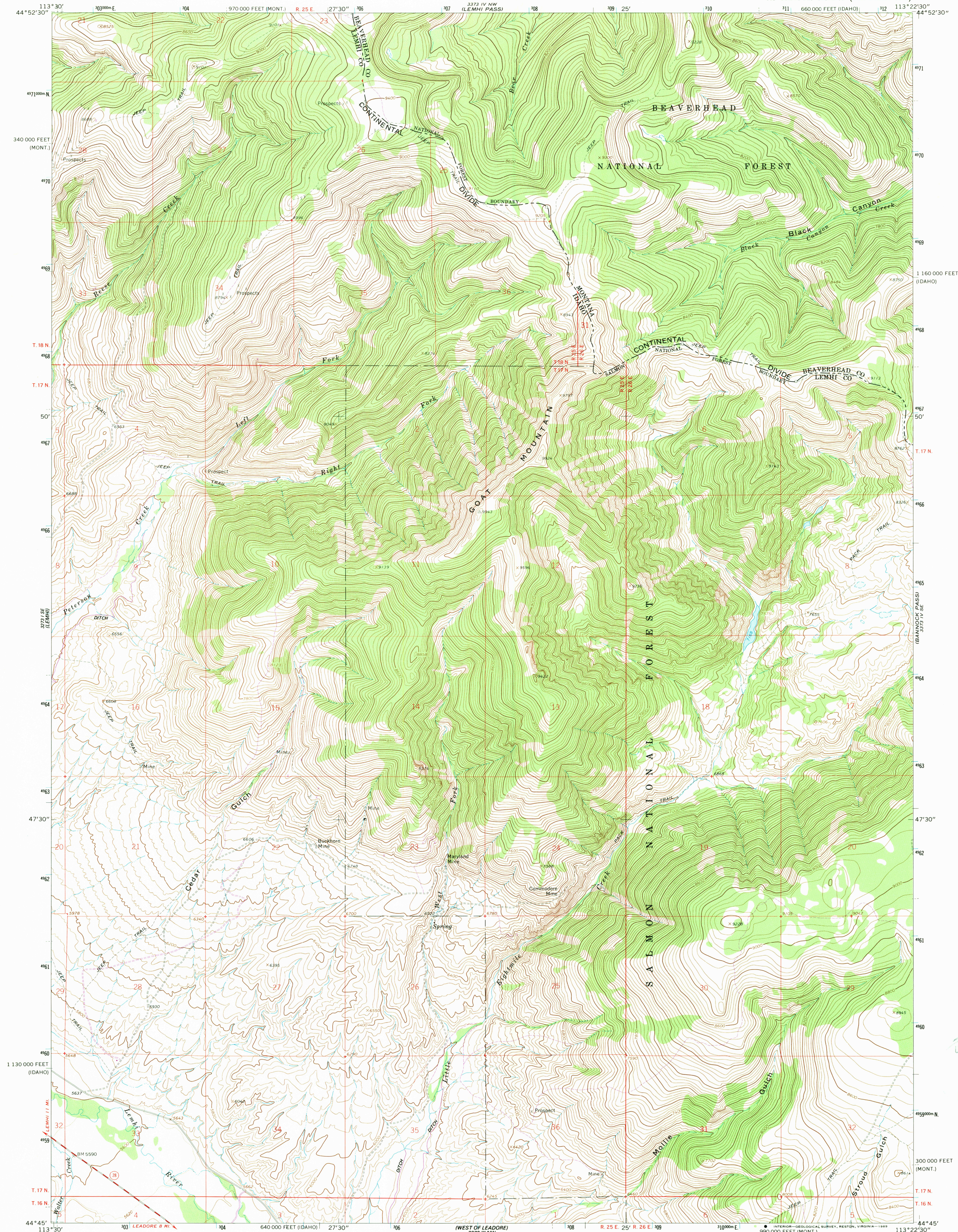


3272 IV NE  
AGENCY CREEK

UNITED STATES  
DEPARTMENT OF THE INTERIOR  
GEOLOGICAL SURVEY

GOAT MOUNTAIN QUADRANGLE  
IDAHO—MONTANA  
7.5 MINUTE SERIES (TOPOGRAPHIC)

3273 IV NE  
EVERSON CREEK



Mapped, edited, and published by the Geological Survey  
Control by USGS and NOS/NOAA  
Topography by photogrammetric methods from aerial  
photographs taken 1964. Field checked 1965  
Polyconic projection. 1927 North American Datum  
10,000-foot grids based on Idaho coordinate system,  
central zone, and Montana coordinate system,  
south zone  
1000-meter Universal Transverse Mercator grid ticks,  
zone 12, shown in blue  
To place on the predicted North American Datum 1983  
move the projection lines 12 meters north and  
70 meters east as shown by dashed corner ticks  
Fine red dashed lines indicate selected fence lines  
Where omitted, land lines have not been established

UTM GRID AND 1988 MAGNETIC NORTH  
DECLINATION AT CENTER OF SHEET  
There may be private inholdings within  
the boundaries of the National or State  
reservations shown on this map

THIS MAP COMPLIES WITH NATIONAL MAP ACCURACY STANDARDS  
FOR SALE BY U. S. GEOLOGICAL SURVEY, DENVER, COLORADO 80225, OR RESTON, VIRGINIA 22092  
A FOLDER DESCRIBING TOPOGRAPHIC MAPS AND SYMBOLS IS AVAILABLE ON REQUEST

Revisions shown in purple and woodland  
compiled from aerial photographs taken 1984  
and other source data. Partial field check  
by U.S. Forest Service. Map edited 1988

GOAT MOUNTAIN, IDAHO—MONT.  
44113 G4-1F-024

1965  
PHOTOREVISED 1988  
DMA 3373 IV SW—SERIES V893

USGS NMD HISTORICAL MAP  
MAR 23 1989  
REC'D FILE COPY