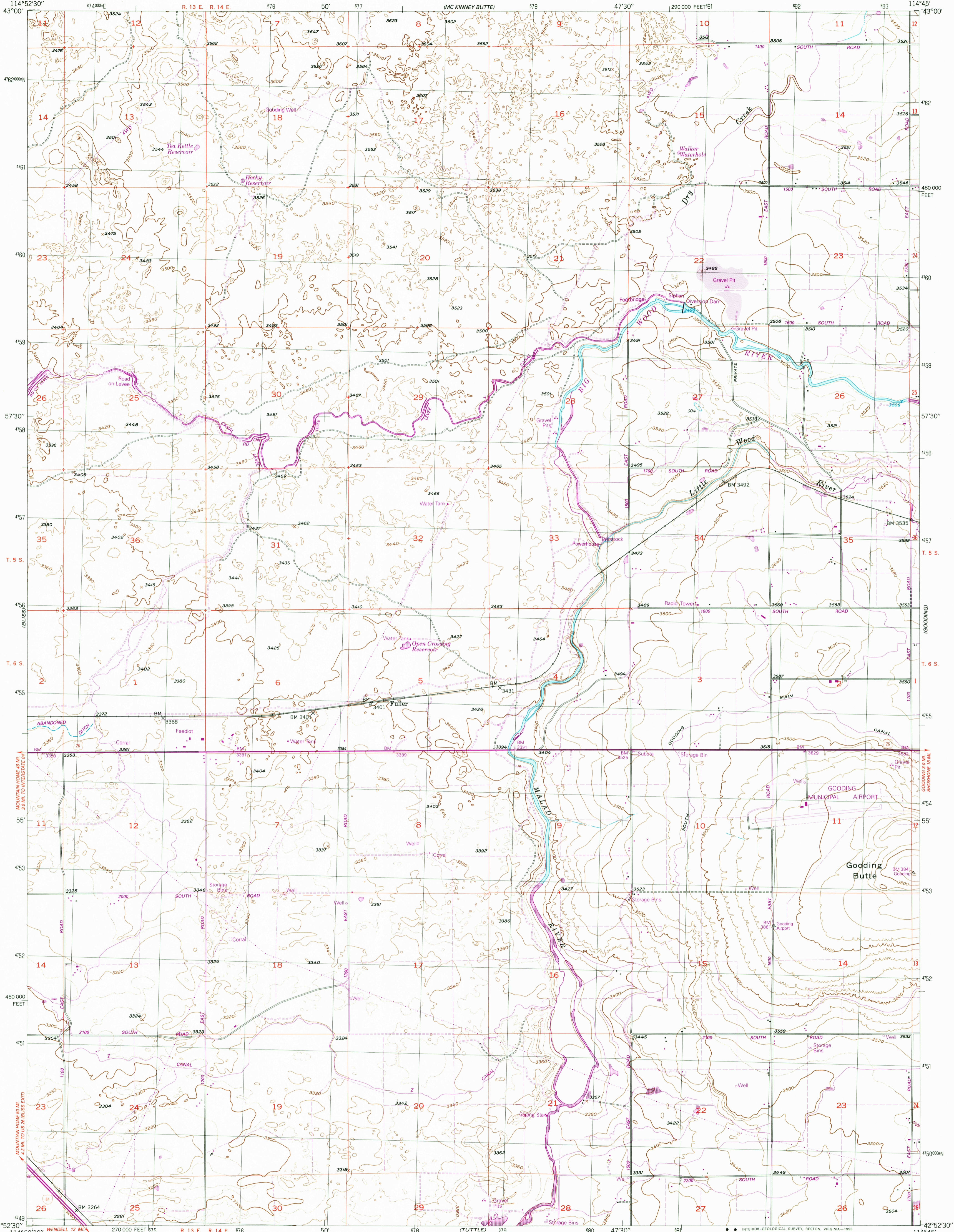
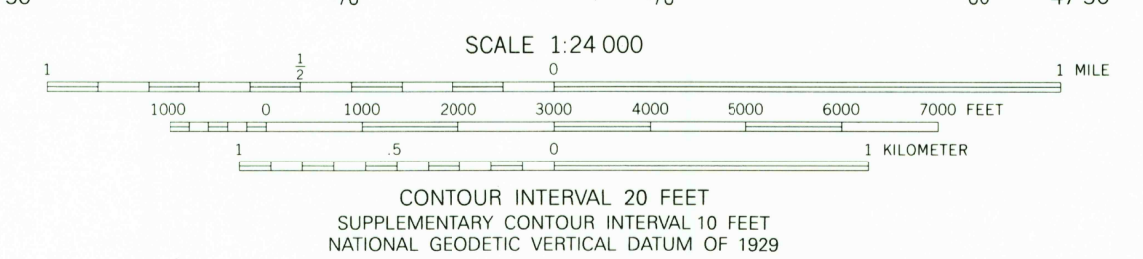
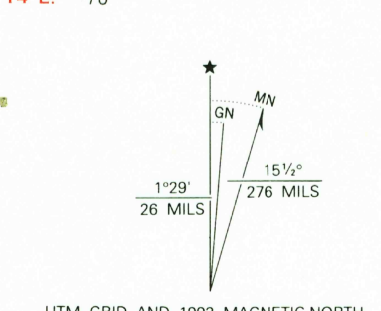


UNITED STATES
DEPARTMENT OF THE INTERIOR
GEOLOGICAL SURVEY

GOODING BUTTE QUADRANGLE
IDAHO-GOODING CO.
7.5 MINUTE SERIES (TOPOGRAPHIC)



Produced by the United States Geological Survey in cooperation with the Army Corps of Engineers Control by USGS and NOS/NOAA
Compiled from aerial photographs taken 1946. Information shown in purple has been updated from aerial photographs taken 1987-88 and field checked. Map edited 1992. Conflicts may exist between some updated features and previously mapped contours
North American Datum of 1927 (NAD 27). Projection and 10,000-foot grid ticks: Idaho Coordinate System, central zone (Transverse Mercator). 1000-meter Universal Transverse Mercator grid, zone 11
The difference between NAD 27 and North American Datum of 1983 (NAD 83) for 7.5 minute intersections is given in USGS Bulletin 1875. The NAD 83 is shown by dashed corner ticks



CONTOUR INTERVAL 20 FEET
SUPPLEMENTARY CONTOUR INTERVAL 10 FEET
NATIONAL GEODETIC VERTICAL DATUM OF 1929
COMPLIES WITH U.S. GEOLOGICAL SURVEY STANDARDS FOR SPATIAL ACCURACY-CLASS 2
FOR SALE BY U.S. GEOLOGICAL SURVEY
DENVER, COLORADO 80225, OR RESTON, VIRGINIA 22092
A FOLDER DESCRIBING TOPOGRAPHIC MAPS AND SYMBOLS IS AVAILABLE ON REQUEST

ROAD CLASSIFICATION

- Primary highway, hard surface
- Secondary highway, hard surface
- Unimproved road
- Light-duty road, hard or improved surface

Interstate Route
 U.S. Route
 State Route

Well
 Storage Bin
 Gaging Station
 Radio Tower
 Powerhouse
 Gravel Pit
 Open Crossing Reservoir
 Water Tank
 Feederlot
 Corral
 ABANDONED DITCH

QUADRANGLE LOCATION
 GOODING BUTTE, IDAHO
 42114-H7-TF-024
 1990
 REVISED 1992
 DMA 3069 IV N-SERIES V893

