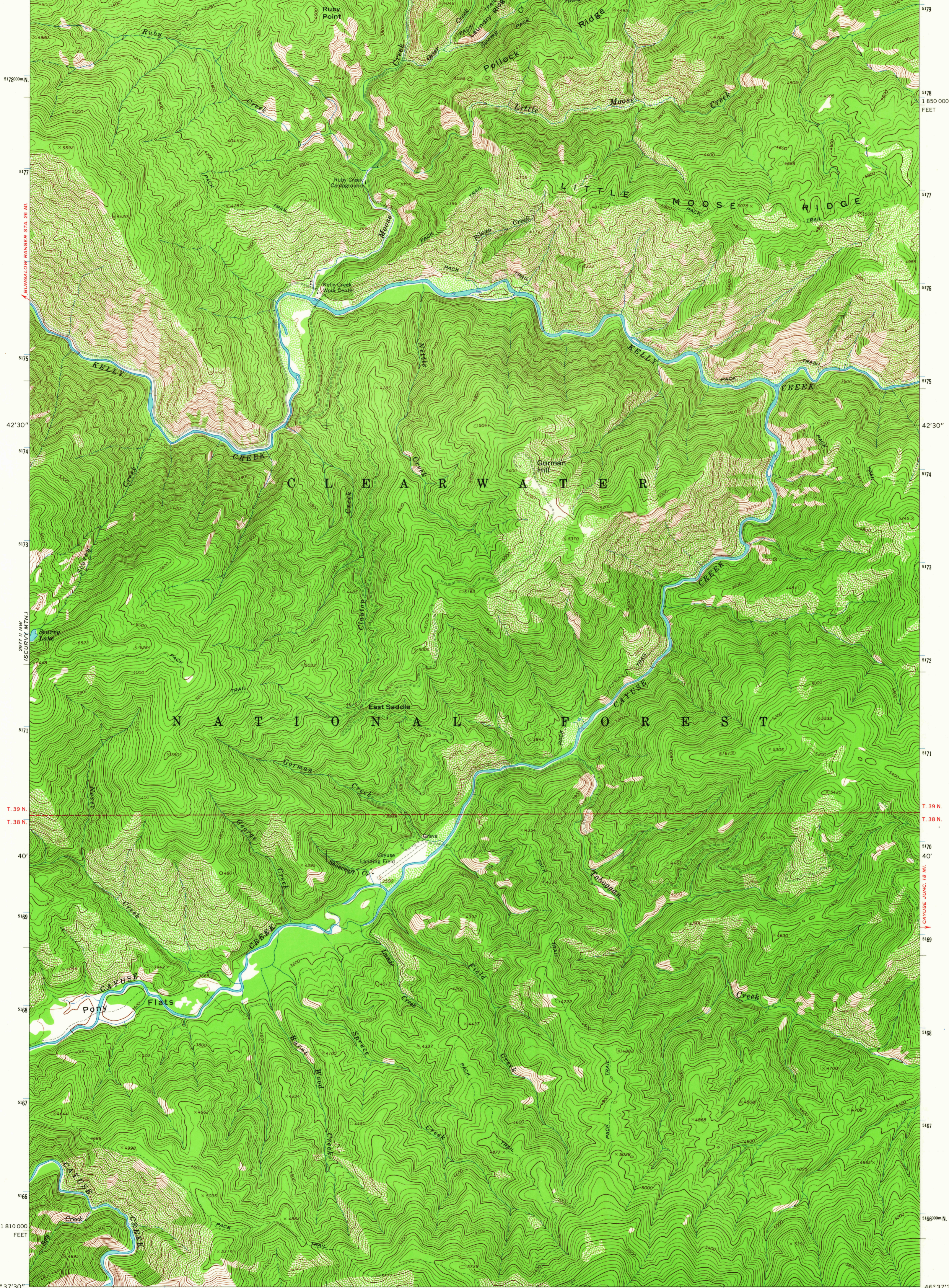
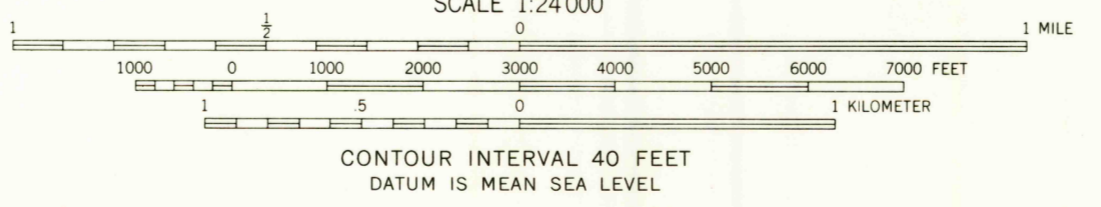
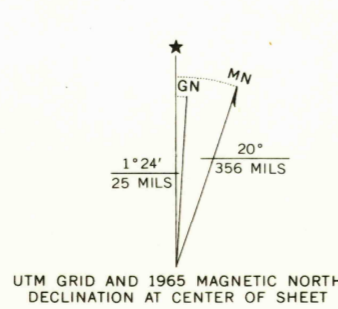


115°07'30" 44 45 46 5' THE CEDARS 1.3 MI. 2977 I SE (OSIER RIDGE) 49 2'30" 450 680 000 FEET 451 115°00' 46°45'



Mapped by the U. S. Forest Service
Edited and published by the Geological Survey
Control by USGS, USC&GS, and USFS
Topography by photogrammetric methods from aerial
photographs taken 1959. Field checked by USGS 1965
Polyconic projection. 1927 North American datum
10,000-foot grid based on Idaho coordinate system,
west zone
1000-meter Universal Transverse Mercator grid ticks,
zone 11, shown in blue
Where omitted, land lines have not been established



ROAD CLASSIFICATION
Light duty ————— Unimproved dirt - - - - -

USGS
Historical File
Topographic Division

QUADRANGLE LOCATION

GORMAN HILL, IDAHO
N4637.5—W11500/7.5

1965

AMS 2977 II NE—SERIES V893

U.S.G.S.
FILE COPY
TOPOGRAPHIC DIVISION

2855
JAN 26 1968