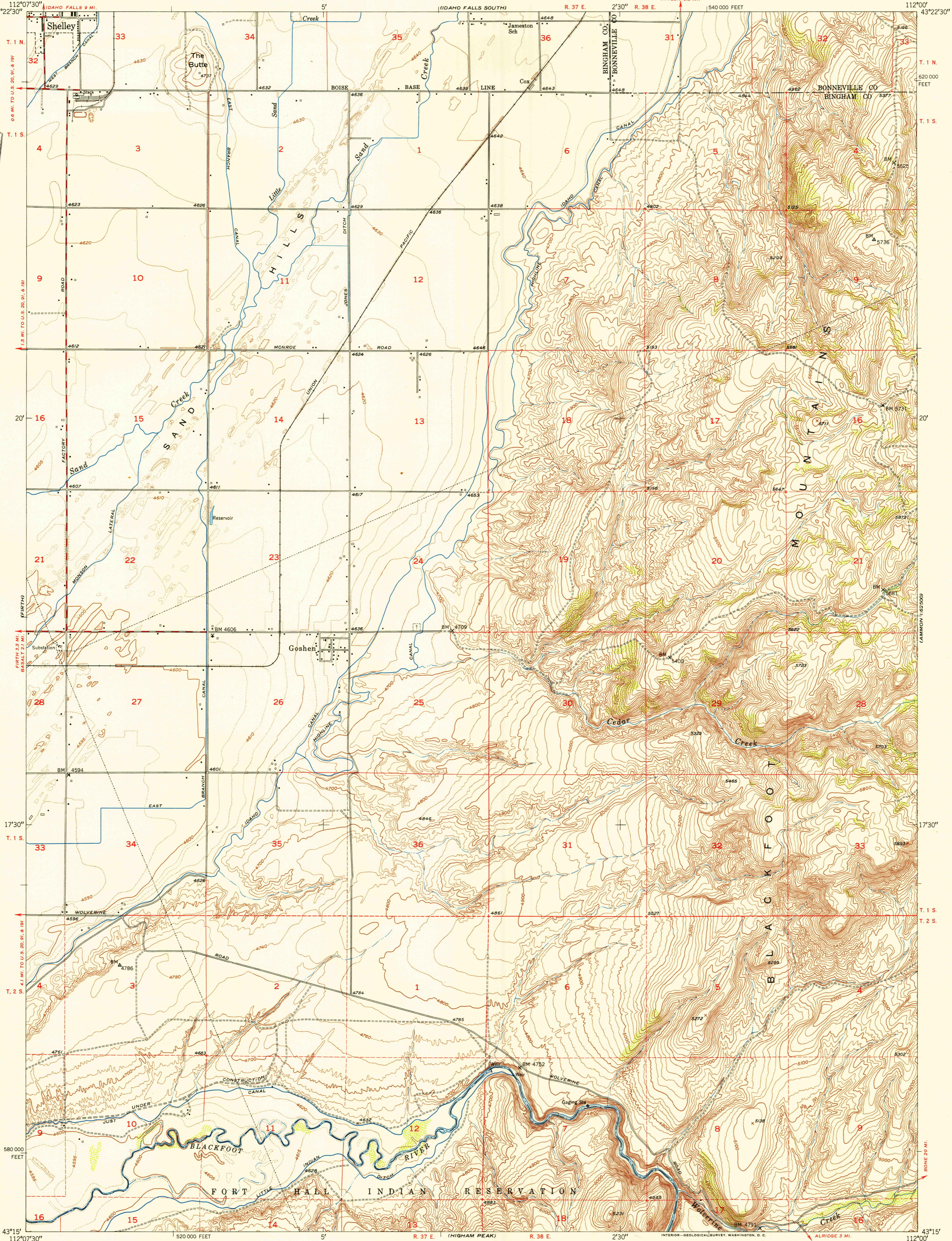
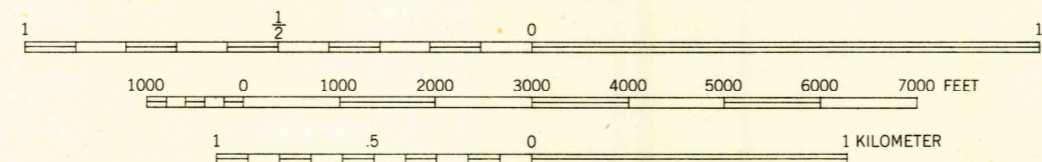
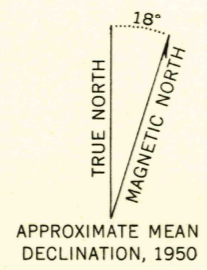


FILE COPY  
Inspection and Editing



Mapped, edited, and published by the Geological Survey  
Control by USGS and USC&GS

Topography from aerial photographs by multiplex methods  
and by plane-table surveys 1950  
Aerial photographs taken 1946  
Polyconic projection. 1927 North American datum  
10,000-foot grid based on Idaho coordinate system,  
east zone  
Dashed land lines indicate approximate location



CONTOUR INTERVAL 20 FEET  
DOTTED LINES REPRESENT 5 FOOT CONTOURS  
DATUM IS MEAN SEA LEVEL

ROAD CLASSIFICATION  
Heavy-duty 4 LANE 16 LANE Light-duty  
Medium-duty 4 LANE 16 LANE Unimproved dirt  
U.S. Route State Route

USGS  
Historical File  
Topographic Division  
Inspection and Editing

GOSHEN, IDAHO  
N4315-W11200/7.5

EDITION OF 1952

THIS MAP COMPLIES WITH NATIONAL MAP ACCURACY STANDARDS  
FOR SALE BY U. S. GEOLOGICAL SURVEY, FEDERAL CENTER, DENVER, COLORADO OR WASHINGTON 25, D. C.  
A FOLDER DESCRIBING TOPOGRAPHIC MAPS AND SYMBOLS IS AVAILABLE ON REQUEST