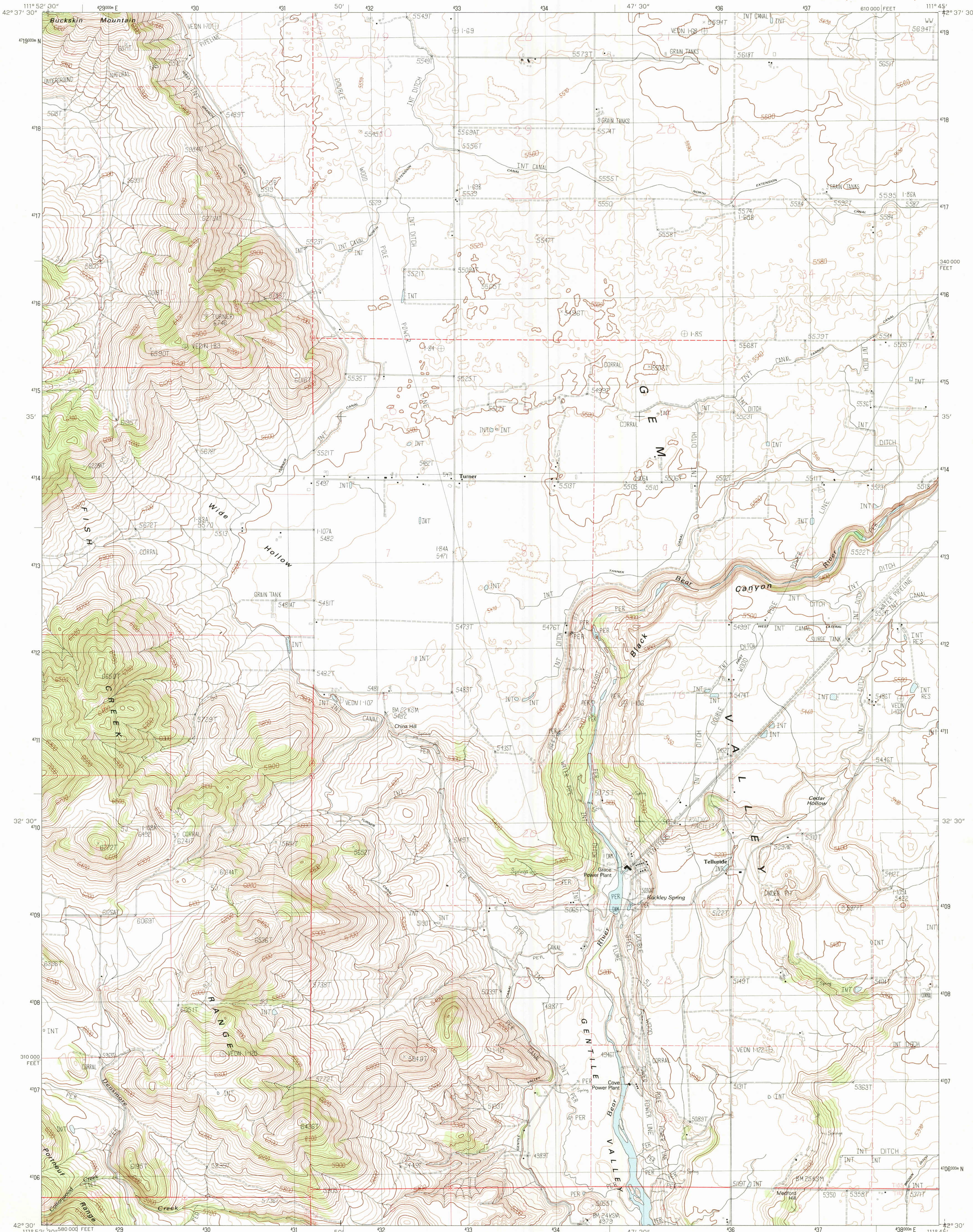


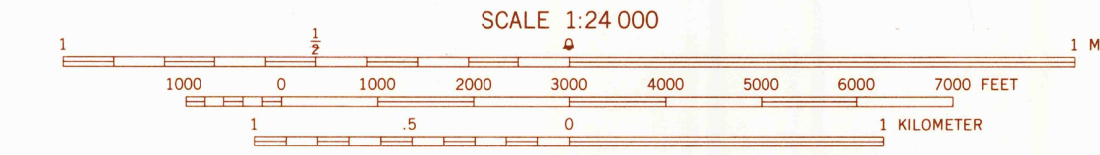
UNITED STATES  
DEPARTMENT OF THE INTERIOR  
GEOLOGICAL SURVEY

GRACE POWER PLANT QUADRANGLE  
IDAHO-CARIBOU CO.  
7.5 MINUTE SERIES (TOPOGRAPHIC)



PRODUCED BY THE UNITED STATES GEOLOGICAL SURVEY  
CONTROL BY: USGS, NOS/NOAA  
COMPILED FROM AERIAL PHOTOGRAPHS TAKEN: 1976  
FIELD CHECKED: 1979, MAP EDITED: 1980  
PROJECTION: TRANSVERSE MERCATOR  
GRID: 1000-METER UNIVERSAL TRANSVERSE MERCATOR, ZONE 12  
10,000-FOOT STATE GRID TICS: IDAHO, EAST ZONE  
UTM GRID DECLINATION: 033 WEST  
1980 MAGNETIC NORTH DECLINATION: 035 WEST  
VERTICAL DATUM: NATIONAL GEODETIC VERTICAL DATUM OF 1929  
HORIZONTAL DATUM: 1927 NORTH AMERICAN DATUM  
To place on the predicted North American Datum of 1983,  
move the projection lines as shown by dashed corner ticks  
(12 meters north/65 meters east)  
There may be private inholdings within the boundaries of any  
Federal and State Reservations shown on this map

**PROVISIONAL MAP**  
Produced from original  
manuscript drawings. Infor-  
mation shown as of date of  
field check.



SCALE 1:24 000  
CONTOUR INTERVAL 20 FEET  
SUPPLEMENTARY CONTOUR INTERVAL 10 FEET  
TO CONVERT FEET TO METERS MULTIPLY BY .3048  
TO CONVERT METERS TO FEET MULTIPLY BY 3.2808

1	2	3	1 Bancroft
2	3	4	2 Talmage
3	4	5	3 Alexander
4	5	6	4 Sedgwick Peak
5	6	7	5 Grace
6	7	8	6 Cottonwood Peak
7	8		7 Thatcher Hill
8			8 Thatcher

**ROAD LEGEND**  
Improved Road.....  
Unimproved Road.....  
Trail.....  
Interstate Route U.S. Route State Route

GRACE POWER PLANT, IDAHO  
PROVISIONAL EDITION 1982  
42111-E7-TF-024

THIS MAP COMPLIES WITH NATIONAL MAP ACCURACY STANDARDS  
FOR SALE BY U. S. GEOLOGICAL SURVEY, DENVER, COLORADO 80225, OR RESTON, VIRGINIA 22029

MAR 20 1983

1600