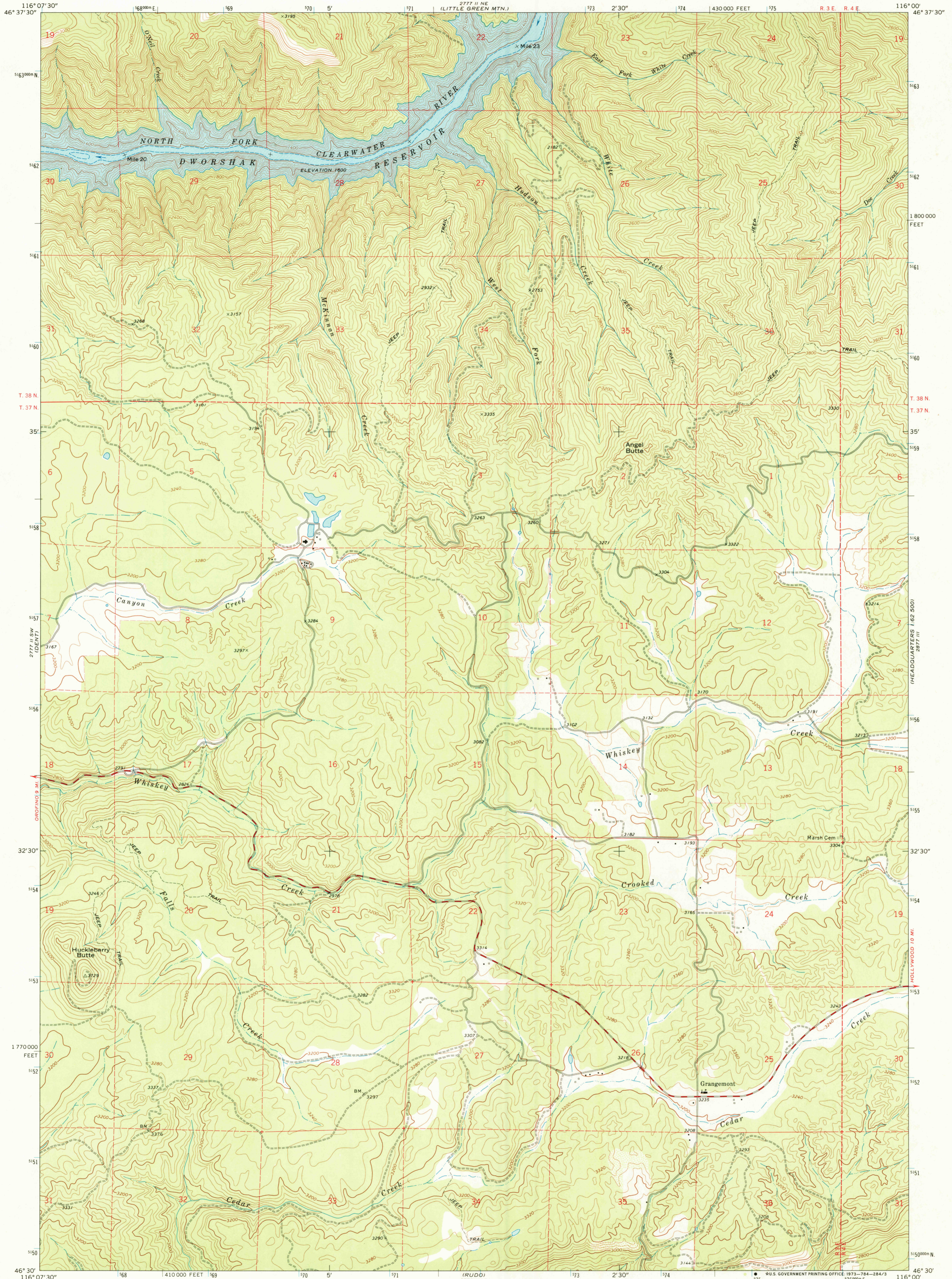


UNITED STATES
DEPARTMENT OF THE INTERIOR
GEOLOGICAL SURVEY

GRANGEMONT QUADRANGLE
IDAHO—CLEARWATER CO.
7.5 MINUTE SERIES (TOPOGRAPHIC)



Mapped, edited, and published by the Geological Survey

Control by USGS and USC&GS

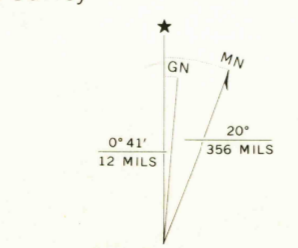
Topography by photogrammetric methods from aerial photographs taken 1968. Field checked 1969

Polyconic projection. 1927 North American datum

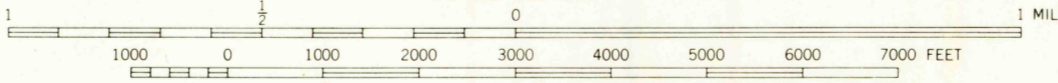
10,000-foot grid based on Idaho coordinate system, west zone

100-meter Universal Transverse Mercator grid ticks, zone 11, shown in blue

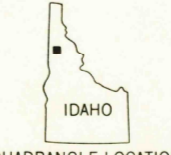
Fine red dashed lines indicate selected fence lines



UTM GRID AND 1969 MAGNETIC NORTH DECLINATION AT CENTER OF SHEET



CONTOUR INTERVAL 40 FEET
DATUM IS MEAN SEA LEVEL



QUADRANGLE LOCATION

ROAD CLASSIFICATION	
Primary highway, hard surface	Light-duty road, hard or improved surface
Secondary highway, hard surface	Unimproved road
Interstate Route	U. S. Route
	State Route

JUN 27 1973

GRANGEMONT, IDAHO
N4630-W11600/7.5

1969

AMS 2777 II SE—SERIES V893

FOR SALE BY U.S. GEOLOGICAL SURVEY, DENVER, COLORADO 80225, OR WASHINGTON, D. C. 20242
A FOLDER DESCRIBING TOPOGRAPHIC MAPS AND SYMBOLS IS AVAILABLE ON REQUEST

200

Grangemont