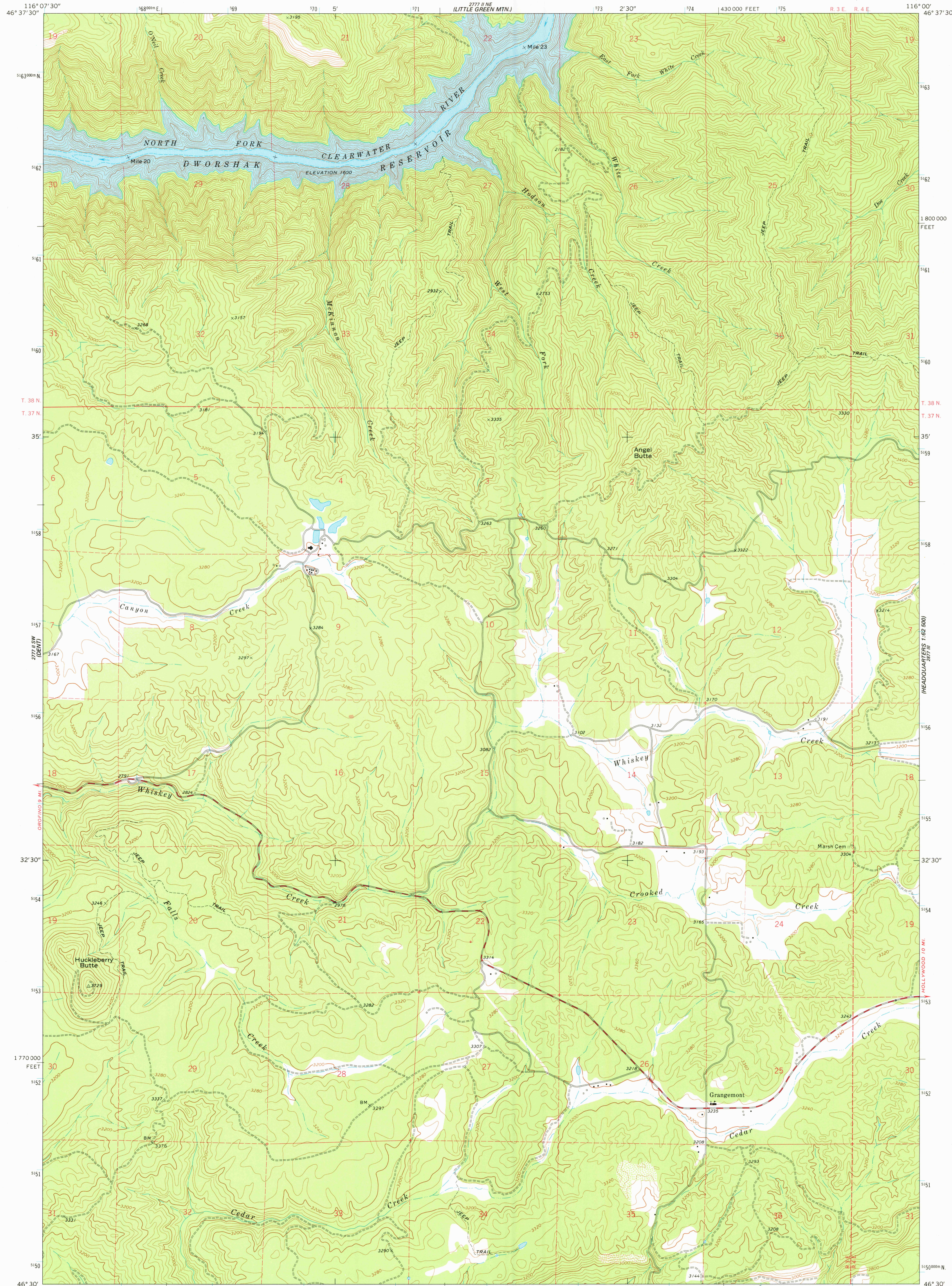


2777 II NE  
2778 I NW

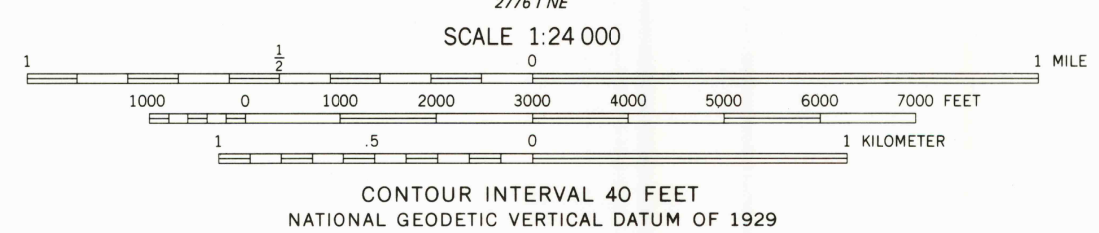
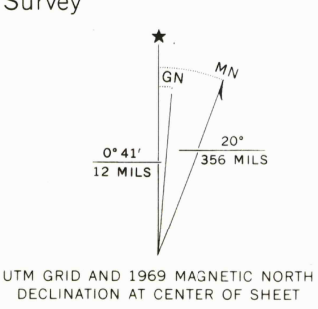
UNITED STATES  
DEPARTMENT OF THE INTERIOR  
GEOLOGICAL SURVEY

GRANGEMONT QUADRANGLE  
IDAHO—CLEARWATER CO.  
7.5 MINUTE SERIES (TOPOGRAPHIC)

2777 II SE  
2778 I NE



Mapped, edited, and published by the Geological Survey  
Control by USGS and USC&GS  
Topography by photogrammetric methods from aerial  
photographs taken 1968. Field checked 1969  
Polyconic projection. 1927 North American datum  
10,000-foot grid based on Idaho coordinate system,  
west zone  
1000-meter Universal Transverse Mercator grid ticks,  
zone 11, shown in blue  
Fine red dashed lines indicate selected fence lines



ROAD CLASSIFICATION  
Primary highway, hard surface  
Secondary highway, hard surface  
Light duty road, hard or improved surface  
Unimproved road  
○ Interstate Route  
□ U. S. Route  
○ State Route



USGS  
Historical File  
Topographic Division  
GRANGEMONT, IDAHO  
N4630-W11600/7.5  
1969

AUG 17 1978

FOR SALE BY U. S. GEOLOGICAL SURVEY, DENVER, COLORADO 80225, OR RESTON, VIRGINIA 22092  
A FOLDER DESCRIBING TOPOGRAPHIC MAPS AND SYMBOLS IS AVAILABLE ON REQUEST

AMS 2777 II SE—SERIES V893

4300