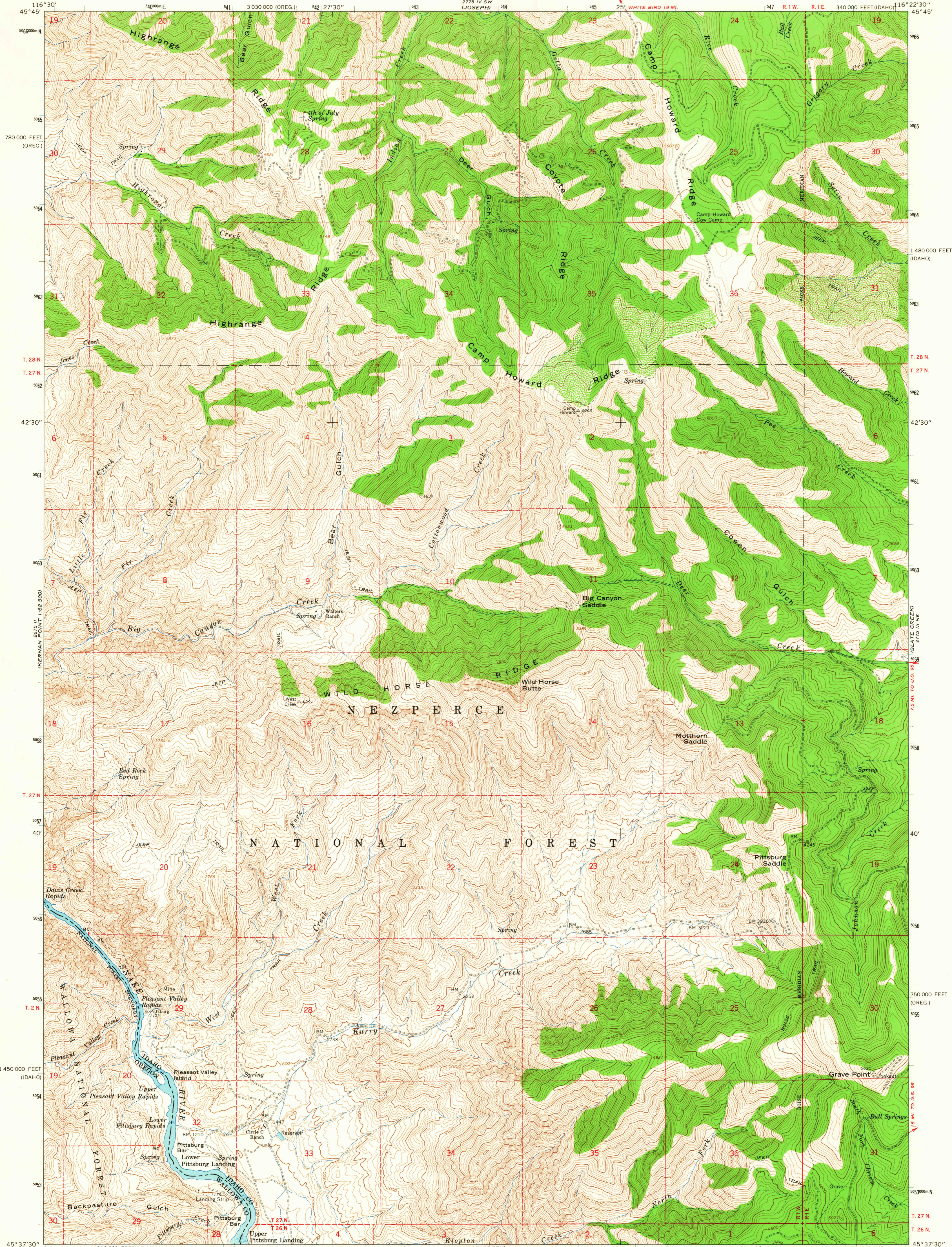
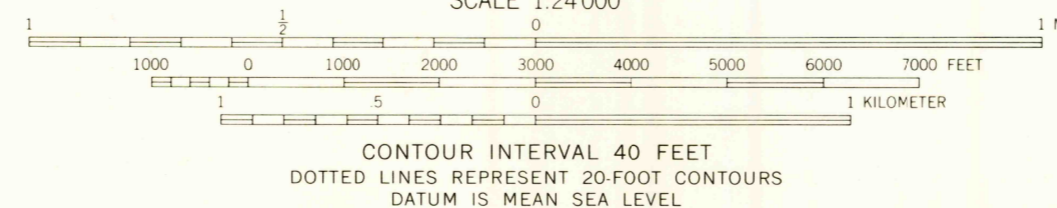
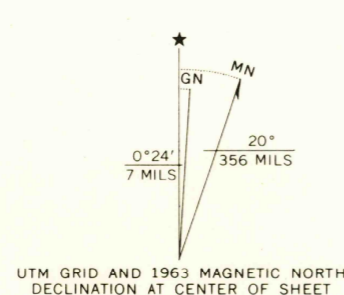


UNITED STATES
DEPARTMENT OF THE INTERIOR
GEOLOGICAL SURVEY

GRAVE POINT QUADRANGLE
IDAHO-OREGON
7.5 MINUTE SERIES (TOPOGRAPHIC)



Mapped, edited, and published by the Geological Survey
Control by USGS and USC&GS
Topography by photogrammetric methods from aerial
photographs taken 1961. Field checked 1963
Polyconic projection. 1927 North American datum
10,000-foot grids based on Idaho coordinate system, west zone
and Oregon coordinate system, north zone
1000-meter Universal Transverse Mercator grid ticks,
zone 11, shown in blue
Where omitted, land lines have not been established



ROAD CLASSIFICATION
Light-duty ————— Unimproved dirt - - - - -

GRAVE POINT, IDAHO-OREG.
N4537.5-W11622.5/7.5

U.S.G.S.
FILE COPY
TOPOGRAPHIC DIVISION
JUL 22 1965

AMS 2775 III NW-SERIES V893