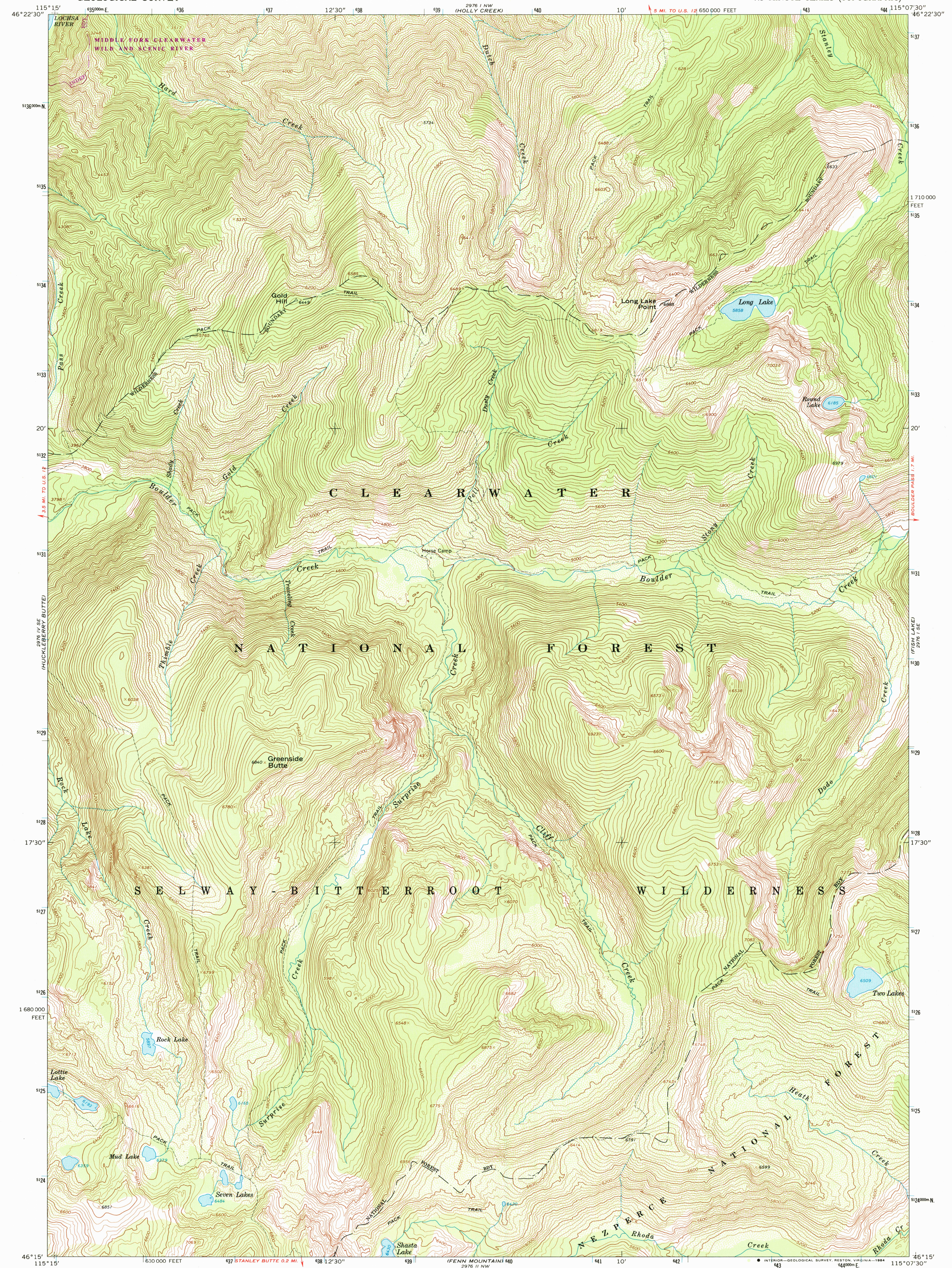


2976 IV SE  
(2976 IV SE  
CHIMNEY PEAK)

UNITED STATES  
DEPARTMENT OF THE INTERIOR  
GEOLOGICAL SURVEY

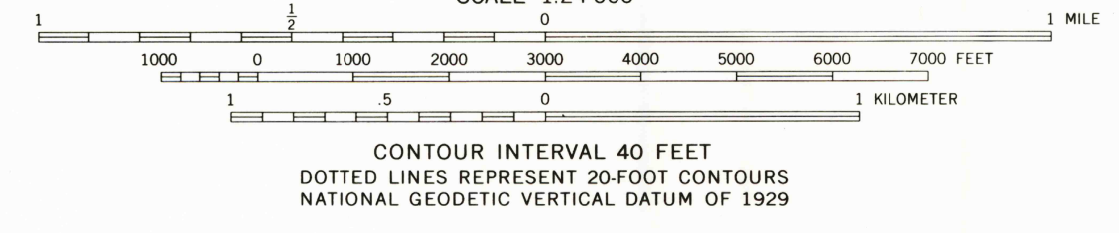
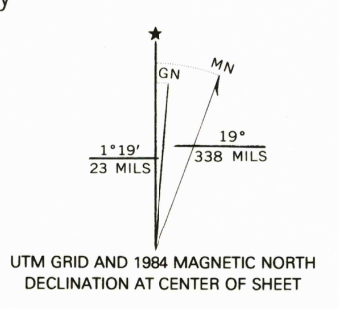
GREENSIDE BUTTE QUADRANGLE  
IDAHO—IDAHO CO.  
7.5 MINUTE SERIES (TOPOGRAPHIC)

2976 IV NE  
(GREENSIDE BUTTE)



CHIMNEY PEAK  
2976 III SE

Mapped, edited, and published by the Geological Survey  
Control by USGS and NOS/NOAA  
Topography by photogrammetric methods from aerial photographs taken 1965. Field checked 1966  
Polyconic projection. 1927 North American datum, 10,000-foot grid based on Idaho coordinate system, west zone  
1000-meter Universal Transverse Mercator grid ticks, zone 11, shown in blue  
To place on the predicted North American Datum 1983 move the projection lines 14 meters north and 74 meters east as shown by dashed corner ticks  
Land lines have not been established in this area  
There may be private inholdings within the boundaries of the National or State reservations shown on this map



ROAD CLASSIFICATION  
Trails

GREENSIDE BUTTE, IDAHO  
N4615—W11507.5/7.5

THIS MAP COMPLIES WITH NATIONAL MAP ACCURACY STANDARDS  
FOR SALE BY U. S. GEOLOGICAL SURVEY, DENVER, COLORADO 80225, OR RESTON, VIRGINIA 22092  
A FOLDER DESCRIBING TOPOGRAPHIC MAPS AND SYMBOLS IS AVAILABLE ON REQUEST

Revisions shown in purple and woodland compiled from aerial photographs taken 1982 and other sources  
Partial field check by U.S. Forest Service. Map edited 1984

1966  
PHOTOREVISED 1984  
DMA 2976 I SW—SERIES V893

2976 IV NE  
(BIG ROCK MOUNTAIN)