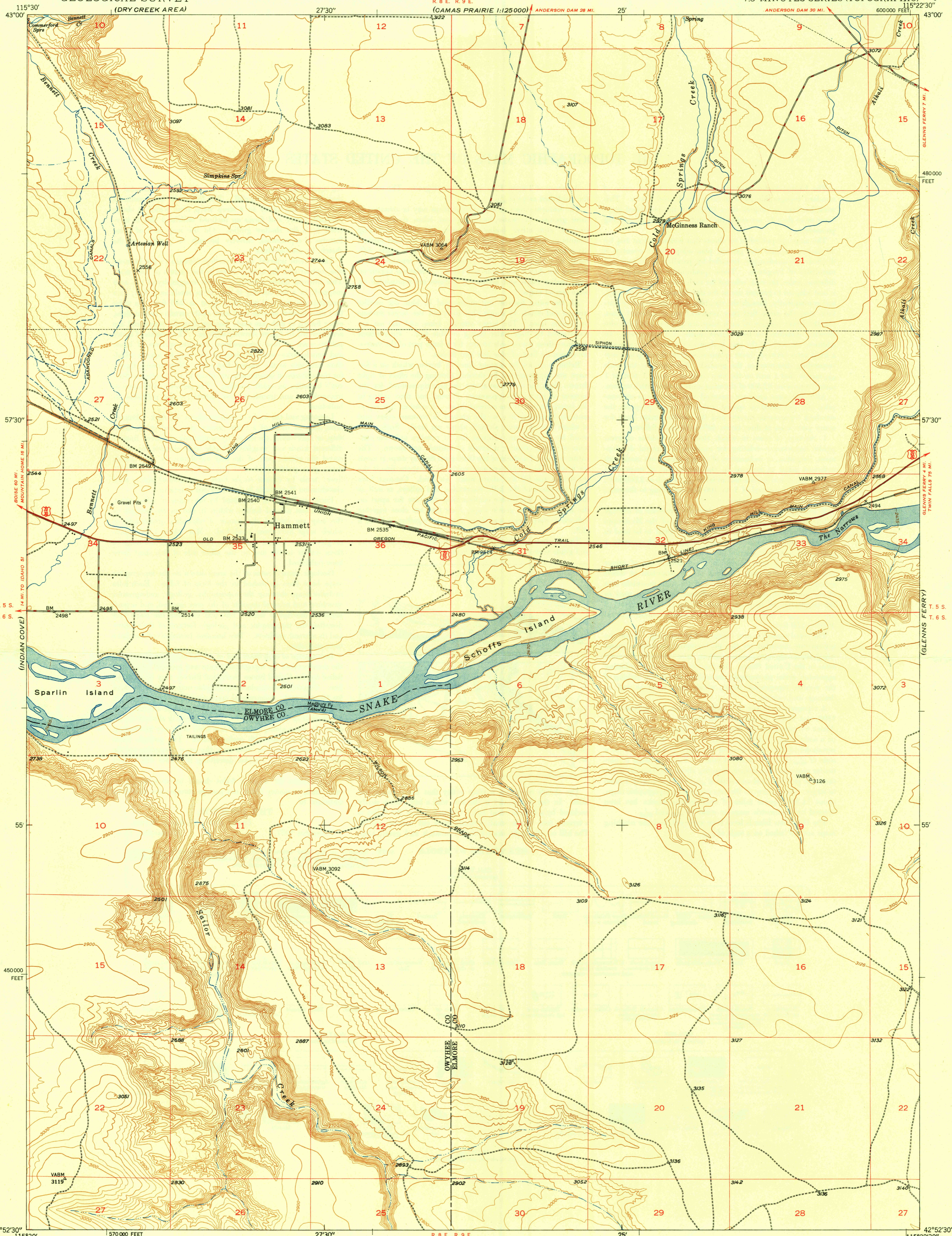


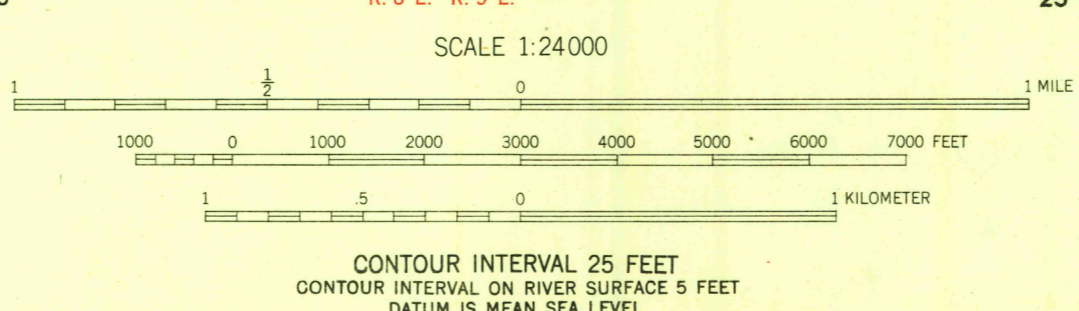
UNITED STATES
DEPARTMENT OF THE INTERIOR
GEOLOGICAL SURVEY

U.S.G.S.
FILE COPY
Inspection and Printing.

HAMMETT QUADRANGLE
IDAHO
7.5 MINUTES SERIES (TOPOGRAPHIC)



Mapped, edited, and published by the Geological Survey
Control by USGS and USC & GS
Culture and drainage in part compiled from
aerial photographs taken 1946
Topography by plane-table methods 1946-1947
Polyconic projection. 1927 North American datum
10000 foot grid based on Idaho coordinate system,
West zone



ROAD CLASSIFICATION
HARD SURFACE ALL WEATHER ROADS DRY WEATHER ROADS
Heavy-duty ——— 4 LANE LANE Improved dirt
Medium-duty ——— 4 LANE LANE Unimproved dirt
Loose-surface, graded, or narrow hard-surface - - -
U. S. Route State Route

HAMMETT, IDAHO
N4252.5-W11522.5/7.5
PRINTED 1948

U.S.G.S.
FILE COPY
Inspection and Printing.

U.S.G.S.
FILE COPY
Inspection and Printing.

Uses
Historical
Topographic
FILE COPY
Inspection and Printing.

DEB 14 1948 2165