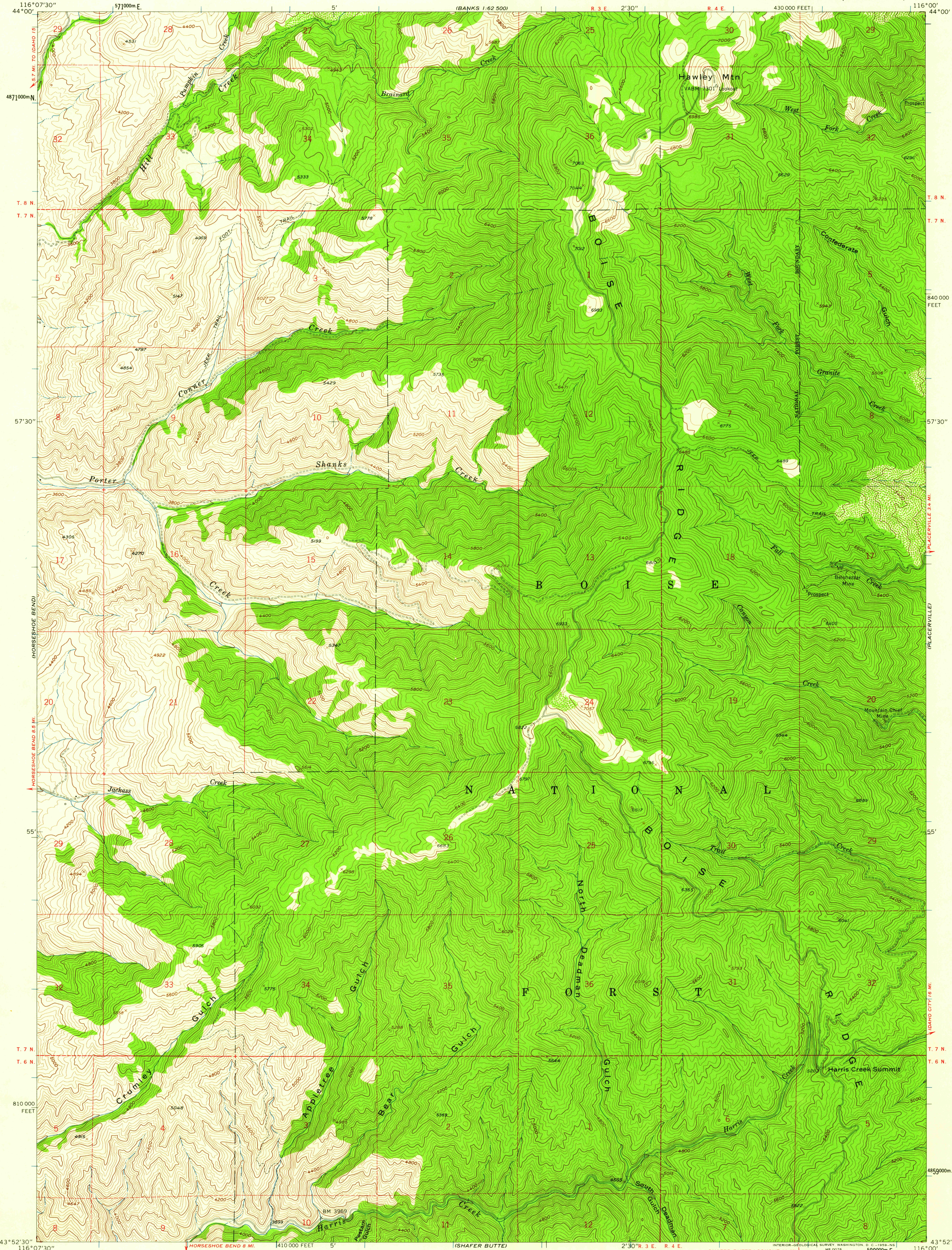


UNITED STATES  
DEPARTMENT OF THE INTERIOR  
GEOLOGICAL SURVEY

UNITED STATES  
DEPARTMENT OF AGRICULTURE  
FOREST SERVICE

HARRIS CREEK SUMMIT QUADRANGLE  
IDAHO-BOISE CO.  
7.5 MINUTE SERIES (TOPOGRAPHIC)



Mapped by the U. S. Forest Service  
Edited and published by the Geological Survey  
Control by USGS, USC&GS, and USFS  
Topography from aerial photographs by KEK plotter  
Aerial photographs taken 1937, 1938, and 1946  
Field check by USGS 1957  
Polyconic projection. 1927 North American datum.  
10,000-foot grid based on Idaho coordinate system, west zone  
1000-meter Universal Transverse Mercator grid ticks,  
zone 11, shown in blue  
Dashed land lines indicate approximate locations  
Unchecked elevations are shown in brown

SCALE 1:24,000  
1 MILE  
7000 FEET  
6000  
5000  
4000  
3000  
2000  
1000  
0  
1 KILOMETER  
CONTOUR INTERVAL 40 FEET  
DATUM IS MEAN SEA LEVEL

USGS  
Historical File  
Topographic Division  
QUADRANGLE LOCATION  
IDAHO

ROAD CLASSIFICATION  
Light-duty ————— Unimproved dirt - - - - -  
HARRIS CREEK SUMMIT, IDAHO  
N4352.5-W11600.75  
1957

U.S.G.S.  
FILE COPY  
TOPOGRAPHIC DIVISION

SEP - 3 1959  
2015