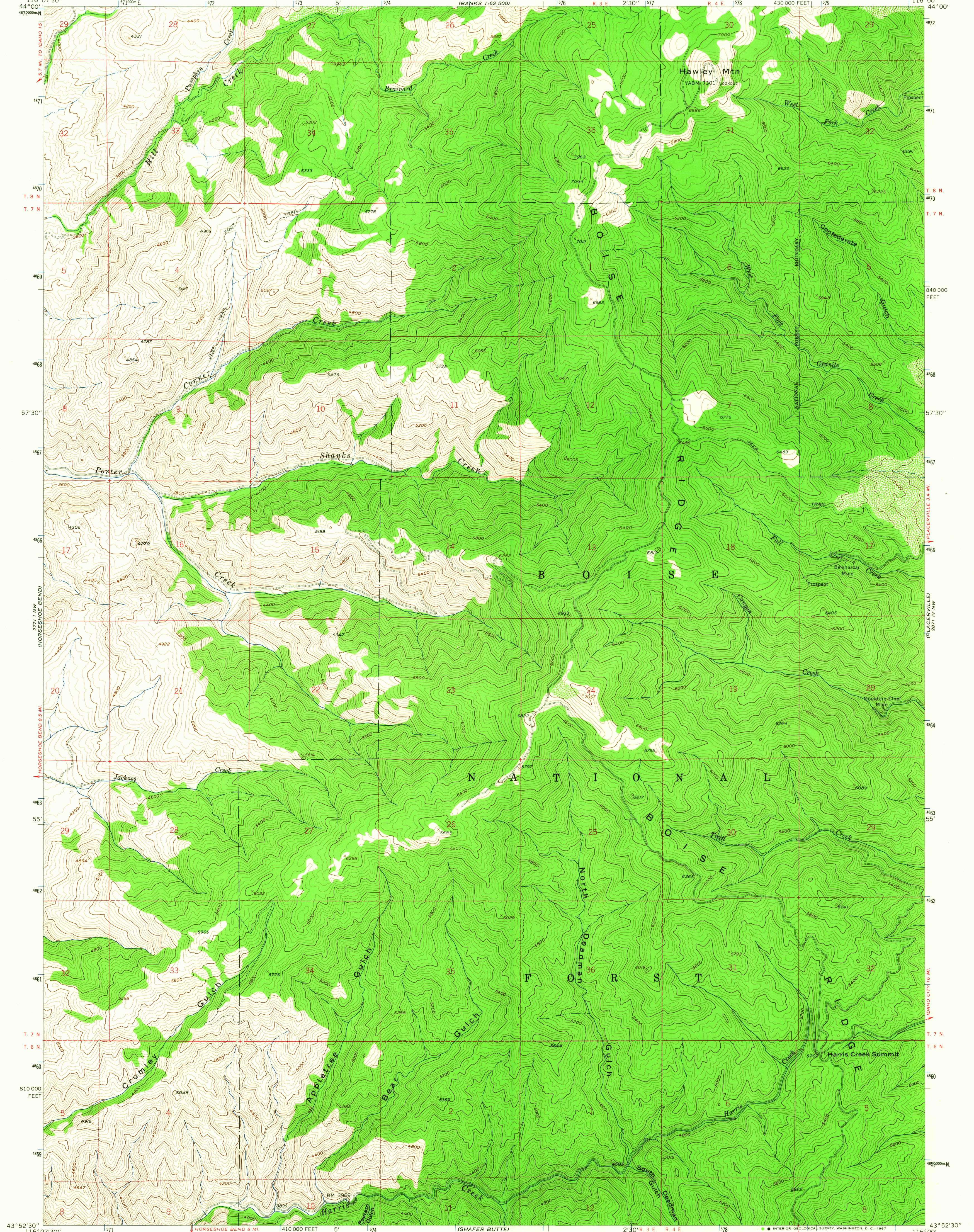
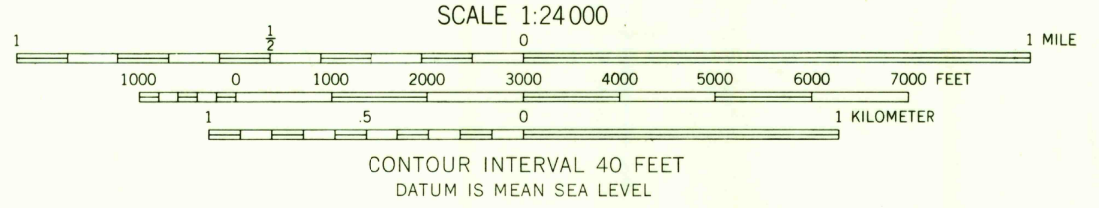
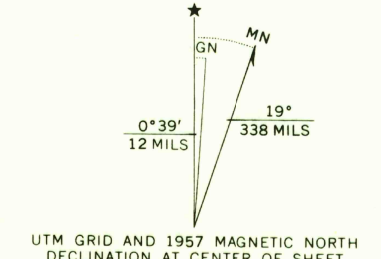


2772 I
1:62,500

2772 I
1:62,500



Mapped by the U. S. Forest Service
Edited and published by the Geological Survey
Control by USGS, USC&GS, and USFS
Topography from aerial photographs by KEK plotter
Aerial photographs taken 1937, 1938, and 1946
Field check by USGS 1957
Polyconic projection. 1927 North American datum
10,000-foot grid based on Idaho coordinate system, west zone
1000-meter Universal Transverse Mercator grid ticks,
zone 11, shown in blue
Dashed land lines indicate approximate locations
Unchecked elevations are shown in brown



USGS
Historical File
Topographic Division

ROAD CLASSIFICATION
Light duty ————— Unimproved dirt - - - - -



HARRIS CREEK SUMMIT, IDAHO
N4352.5-W11600.7.5

FILE COPY
TOPOGRAPHIC DIVISION

AMS 2771 I NE-SERIES V893

FOR SALE BY U. S. GEOLOGICAL SURVEY, DENVER, COLORADO 80225, OR WASHINGTON, D. C. 20242
A FOLDER DESCRIBING TOPOGRAPHIC MAPS AND SYMBOLS IS AVAILABLE ON REQUEST

2670
OCT 4 1967